

USING 2-SIDED PRINTING WITH THE XEROX WORKCENTRE MC20

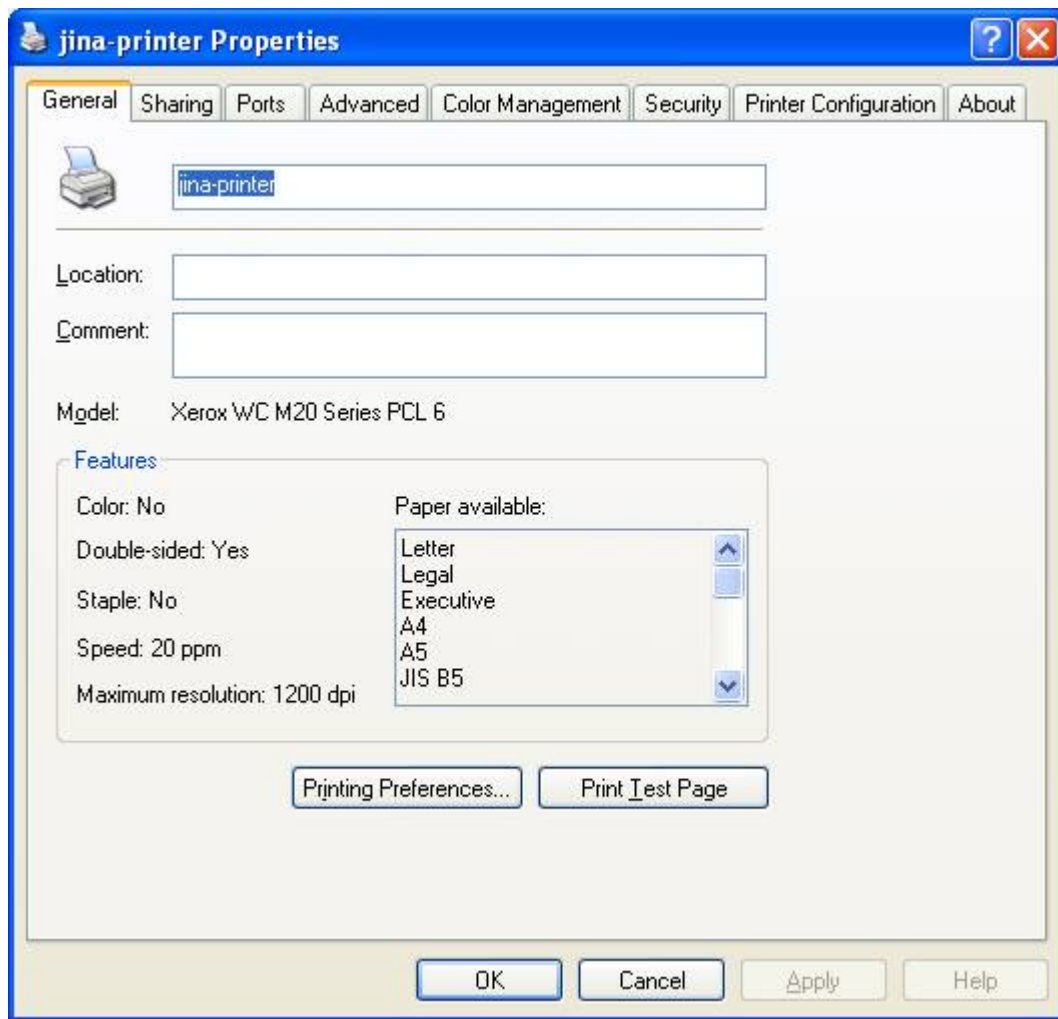
1. If you haven't already installed the printer, do that first. The Windows & MAC OSX drivers can be found at

http://isnap.nd.edu/html/internal_computing.html

Its network name is JINA-printer.phys.nd.edu

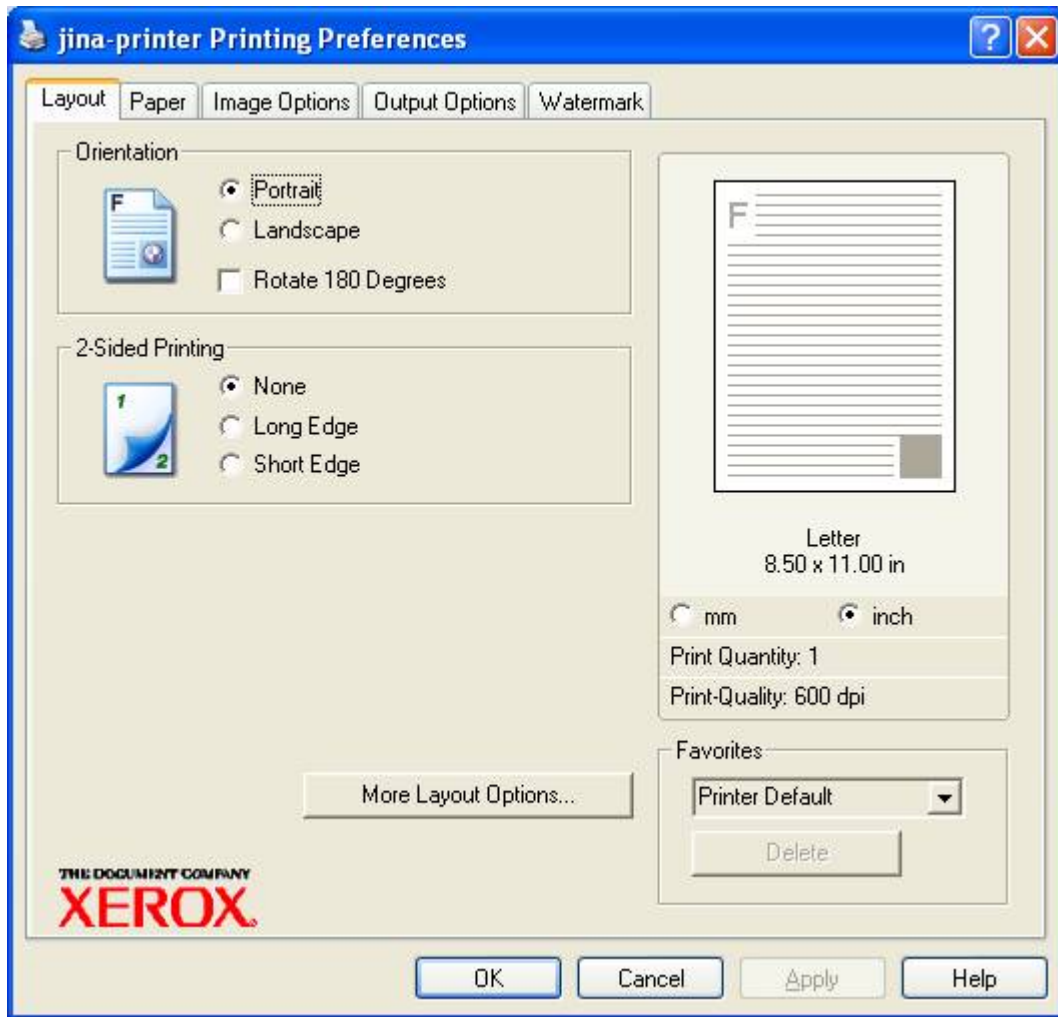
Its device driver should be "WC M20 PL 6" in Windows Vista/XP.

2. Once the printer is installed, examine its properties. In Windows, go to Start->Printers & Faxes, find the printer, right click on it, and select "Properties". You'll get a box like this:



Click on the “Printing Preferences” button.

You’ll see the Printing Preferences window:



Under “2-Sided Printing”, select the “Long Edge” radio button, then click “Apply”, then click “OK”.