

**Julie Boynton,**  
director of interior  
architecture

## Facilities Design and Operations

The people behind one of the most  
beautiful campuses in America

Page 14

BARBARA JOHNSTON

INSIDE

United Way  
Pages 4-5

New Faculty  
Pages 7-12

Team Irish  
Page 16



# NEWS BRIEFS

## CAMPUS NEWS

### \$20 MILLION GIFT WILL SUPPORT LOW-INCOME STUDENTS

Sean Cullinan '88 and his wife, Sue, have made a \$20 million gift to the University to fund a groundbreaking program that will make a Notre Dame education a reality for students from households with incomes of less than \$50,000.

**The Fighting Irish Initiative** will fully fund the cost for low-income students to attend Notre Dame — including tuition and fees, room and board, books, transportation and personal expenses. At the same time, the initiative will create a comprehensive enrichment program that will help these students get the most from their Notre Dame experience.

The Office of Student Affairs is engaged in the search for the inaugural director to launch the enrichment programming and will continue to build the program throughout the current academic year.

## WHAT'S GOING ON

### IMPORTANT CHANGES TO OPEN ENROLLMENT

Benefits Open Enrollment takes place Tuesday, Oct. 20 to Friday, Nov. 6. Open Enrollment is your opportunity to elect your medical, dental, vision and other benefits for the 2016 calendar year.

Because there are significant changes to the University's benefit offerings, 2015 medical benefits **will not roll forward to 2016**. All benefit-eligible faculty and staff **must re-enroll** to participate in a 2016 medical plan.

### OPEN ENROLLMENT INFORMATION SESSIONS

Attend an information session to learn more about the new 2016 benefits offerings. Open to all benefit-eligible faculty and staff. See special HR pull-out section, page HR3, or visit [hr.nd.edu/benefits](http://hr.nd.edu/benefits) for the most current listings.

### OPEN ENROLLMENT DECISION GUIDE

For complete details about 2016 benefits, watch for the 2016 Open Enrollment Decision Guide. The guide will be published online at [hr.nd.edu/benefits](http://hr.nd.edu/benefits) by October 1, and will arrive in your home by mail shortly after.

### FREE FLU SHOTS

Free flu vaccines will be available in the Stepan Center Wednesday through Friday, Oct. 7 to 9, for regular (including part-time) faculty and staff, as well as benefit-enrolled spouses or dependents. Your Notre



Welle



Botting



Seabaugh



Cassel



Lamberti

Dame ID is required. See special HR pull-out section, page HR3, for times and additional information.

### CHILDREN'S EDUCATIONAL BENEFITS INFORMATION SESSIONS

Learn about the Educational Benefits offered by the University for children of eligible faculty and staff, including tuition assistance to Notre Dame, Saint Mary's or other institutions. Monday, Sept. 28 or Thursday, Nov. 5, at 7 p.m. in DeBartolo Hall, Room 102.

### HEALTH SCREENINGS END NOV. 6

Don't let time run out! Benefit-eligible faculty and staff who complete a free health screening by Friday, Nov. 6, will receive an automatic \$180 credit, plus entry into a drawing for one of five \$1,000 rewards. This free, confidential checkup will tell you where you stand on such indicators as blood pressure, cholesterol, body mass index and more. Visit [hr.nd.edu/benefits](http://hr.nd.edu/benefits) for details, including on-campus screening locations, or see special HR pull-out section, page HR3.

### IRISH HEALTH BENEFITS AND WELLNESS FAIR

Irish Health is the University's annual benefits and wellness fair for faculty and staff. Visit over 50 benefits vendors and campus partners. Consult with health experts, learn about benefits programs and options, and enjoy free refreshments, services, massages and giveaways. Tuesday, Oct. 20, noon to 7 p.m. and Wednesday, Oct. 21, 7 a.m. to noon. See special HR pull-out section, page HR4.

### LEARN MORE ABOUT THE CATHOLIC FAITH

This fall, staff chaplain **Rev. Jim Bracke, C.S.C.**, will offer a six-week "Why Catholic?" series to University employees interested in learning more about the Catholic faith. The program, inspired by RENEW International, is designed to help faculty and staff learn to encounter God in everyday life, deepen and share their faith and connect faith with action.

The first meeting takes place from 12:15 to 1:15 p.m. Wednesday, Oct. 14, in the McNeill Room inside La Fortune Student Center. All employees and their spouses are invited to attend, regardless of faith preference. Please plan to attend all sessions.

A fee of \$18.95 covers the cost of materials provided through RENEW International. For more information or to register, contact Father Bracke at [bracke.4@nd.edu](mailto:bracke.4@nd.edu), or Juli Schreiber at [jshrei1@nd.edu](mailto:jshrei1@nd.edu).

## PEOPLE

### PROFESSORS AWARDED ACLS FELLOWSHIPS

The American Council of Learned Societies has awarded fellowships to two faculty members in the College of Arts and Letters.

**John P. Welle**, a professor of Italian in the Department of Romance Languages and Literatures and concurrent professor in the Department of Film, Television, and Theatre, was awarded the fellowship to complete his book "The Poet and the Diva: Print Media from the Golden Age of Italian Silent Film."

**Eileen Hunt Botting**, an associate professor in the Department of Political Science, received the award to support her book project, "Frankenstein and the Question of Human Development." A fellow of both the Kroc Institute for Peace Studies and Nanovic Institute for European Studies, Botting hopes to complete her book by 2018, the bicentennial of Shelley's work.

### SAYERS AND CALLANAN AUTHOR READING

**Valerie Sayers** and **Liam Callanan** will read from their work at 7:30 p.m. Wednesday, Sept. 30, in the Hammes Notre Dame Bookstore on campus. Sayers, professor of English, is the author of six novels, including her most recent, "The Powers," which contemplates baseball, pacifism, and acts of witness in parallel narratives of prose and photography.

Callanan is an author and associate professor of English at the University of Wisconsin-Milwaukee. His novels include "The Cloud Atlas" (2004) and "All Saints" (2007).

### SEJDINAJ ASSUMES LEAD BOARD POSITIONS

**John Sejdinaj**, vice president for finance, has recently been appointed to lead the boards for two organizations. Sejdinaj will serve as president of the Fischhoff National Chamber Music Association and chairman of the board of directors of the Tuition Plan Consortium.

The Fischhoff National Chamber Music Association sponsors the largest annual chamber music competition in the country, and partners with competition alumni to bring free, innovative arts-in-education programs directly to children. Sejdinaj has served on the association's board of directors since 2007.

The Tuition Plan Consortium is a group of 280 U.S. private colleges and universities that own and operate the Private College 529 Plan. The Private College 529 Plan is the only tax-advantaged 529 plan not operated by a state. It is a prepaid tuition plan that allows families to save on the cost of future tuition by paying today's prices for tomorrow's educa-

tion. Sejdinaj has served as a board member for the plan since June 2013.

### SEABAUGH NAMED FREIMANN PROFESSOR

**Alan C. Seabaugh** has been named the Frank M. Freimann Professor of Electrical Engineering. The Freimann professorship holds the distinction of being Notre Dame's first endowed chair. It was established through a gift of the Freimann Charitable Trust, made in honor of Frank M. Freimann, a pioneer of the electronics industry and former chief executive officer of Magnavox.

Seabaugh will continue his duties as director of the SRC-STARnet Center for Low Energy Systems Technology at the University, where he and his team are developing energy-efficient transistors to dramatically-reduced the power requirements of electronic systems.

His current research interests are in nanoscale solid-state electron devices, technology for circuit fabrication and circuits.

### LAW PROFESSOR APPOINTED AS CONSULTANT IN COLOMBIA PEACE TALKS

**Douglass Cassel**, professor of law and adviser to the Center for Civil and Human Rights, has been appointed by Colombian president Juan Manuel Santos to a bilateral working group in the peace talks between the Colombian government and the Revolutionary Armed Forces of Colombia (FARC).

The Colombian government and FARC, the country's largest rebel group, resumed peace talks in 2012 to negotiate an end to the country's half-century-long civil war, the longest such conflict in the world's history. The six-member working group, or subcomisión, to

which Cassel has been appointed includes three members named by FARC and meets in Havana. The group's task is to develop proposals for legal mechanisms to hold accountable those responsible for the most serious acts of violence committed by both the government and the rebel forces during the war.

### LAMBERTI TO DIRECT GLOBES

The Reilly Center has announced that **Gary Lamberti**, professor of biological sciences and director of the Stream and Wetland Ecology Laboratory, has agreed to serve as the interim director of the GLOBES Program in Environment and Society for the 2015-16 academic year.

Lamberti's research interests include identifying and remediating human impacts on aquatic ecosystems, the ecology of native and introduced Pacific salmon, and the role of climate change and invasive species in wetland function, focused in the Pacific Northwest and in the Great Lakes basin.

The GLOBES program began in 2005 with the support of an Integrative Graduate Education and Research Traineeship (IGERT) award from the National Science Foundation (NSF). IGERT is the NSF's flagship interdisciplinary training program, educating U.S. Ph.D. scientists and engineers by building on the foundations of their disciplinary knowledge with interdisciplinary training. GLOBES now offers a Certificate in Environment and Society to Notre Dame students enrolled in doctoral degree programs.

## BLUE MASS



*The University's annual Blue Mass takes place at 5:15 p.m. Thursday, Oct. 1, in the Basilica of the Sacred Heart. All denominations and faith traditions are welcome to join the campus community to honor firefighters, police officers and emergency service workers.*

*Since Sept. 11, 2001, the community has gathered to honor those who serve in public safety, and to remember those who have died in that service.*

*Immediately following the Mass, a reception takes place in the Rotunda of the Main Building. All are invited to attend. For more information, contact Mary Weigle, 631-6200, or Leanne Knapp, 631-8338.*

# CONTACT US @

Have a comment, question or story idea? Contact NDWorks Managing Editor **Carol C. Bradley**, 631-0445 or [bradley.7@nd.edu](mailto:bradley.7@nd.edu). For questions regarding The Week @ ND or the University calendar, contact Electronic Media Coordinator **Jennifer Laiber**, 631-4753 or [laiber.1@nd.edu](mailto:laiber.1@nd.edu). NDWorks is published 12 times a year. 2015-16 publication dates are June 23; July 23; Aug. 27; Sept. 24; Oct. 29; Dec. 3; Jan. 7; Jan 28; Feb. 25; March 24; April 21 and May 16. Content for the issue must be submitted three weeks before the publication date.



# NOVO Registration replaces DART

**New system designed with student input**

BY LIZ ROSECRANTZ, REGISTRAR'S OFFICE

Last spring, Student Government representatives approached the Office of the Registrar regarding improvements to the registration system. The timing was perfect, as the student system software company had just rolled out a new version of registration. This gave the registrar opportunity to test the new registration in collaboration with student representatives.

"We are very grateful for the many productive ideas that Student Government provided and the student representatives who helped test the new registration system in April and May," says registrar **Chuck Hurley**. "These students gave a notable amount of their free time to create and test an improved system. Their input was extremely valuable to the process and improvements."

On July 16, the new registration system, via insideND, was rolled out. Within a few days, more than 150 students had accessed the new registration tool. Among the improvements are an enhanced "Browse Classes" (Class Search) ability, a "swap classes" feature, expanded messaging and a grid-style schedule embedded within registration.

Training for the new system will be available in October and November, prior to the beginning of registration for spring 2016.

In 1989, a contest was held among the student body to name the first non-paper registration system. A graduate student won first prize with the name "DART – Direct Access Registration by Telephone." Later, the word "Technology" replaced "Telephone," but the name DART remained.

This summer, the registrar held a competition to decide on a name for the new system. There were 340 entries, and almost all were viable candidates with thought-provoking ideas. Of course there were a few that, although interesting and funny, were not quite appropriate. The list was narrowed down to ten suggestions, and a group of registrar's office staff and members of student government made the final decision.

The winner, M.S. in Accountancy student Erin Hughes, received a \$100 gift certificate to the Notre Dame Hammes Bookstore for the name "NOVO Registration" (New Organization Via Online Registration).

As additional upgrades to registration take place over the next few semesters, the registrar will continue to collaborate with Student Government and the deans' offices.

# Campus transitions to Canon copiers and printers

With the help of a Working Group of campus partners and a steering committee of University leaders, the University has selected Canon as the preferred supplier for copier/printer equipment and services. All existing Xerox devices currently on the lease program — more than 350 devices — will be replaced with Canon devices.

"The last request for proposal for copier/printer equipment and services was done more than 10 years ago, says **John Sejdinaj**, vice president for finance. "We felt that it was in the best interest of the University to competitively bid the contract and evaluate the suppliers. Canon offered top rated products at competitive prices and a comprehensive support model."



CANON SOLUTIONS AMERICA

Over the summer, Procurement Services, OIT and Canon worked to transition all student print devices under the Print@ND program to Canon. "This transition introduced some new features in Print@ND such as the ability to copy, scan and print by swiping a student ID card or manually entering a student NetID directly on the device," says **Ron Kraemer**, vice president and chief information and digital officer. "As a result, OIT was also able to remove 65 computers required to release the print jobs."

The Print Center in the Joyce Center has already completed the transition from Xerox to Canon. This transition brought cost and energy-efficient technology to meet the diverse needs of Athletics. Now, the focus is on transitioning the rest of the campus to Canon devices during the fall 2015 semester.

The goal of the project team is to ensure that the transition occurs smoothly, with minimal disruption to campus departments. See the box (right) for an overview of the transition process.

Canon has dedicated support personnel on campus and is able to leverage additional staff from their local operations in South Bend if needed. Campus departments will also be able to call a toll-free number for support.

FAQs, a list of standard models and more information on the Canon program is available on Procurement's website, [buy.nd.edu/contracts/office-equipment](http://buy.nd.edu/contracts/office-equipment).

## FAQs

### When will the transition for campus departments occur?

Departments will receive advance notice when the device is ready for installation. In general, administrative departments will transition first, followed by academic departments.

### How do I contact Canon for support and supplies?

To obtain free service, supplies, or training for your Canon device, please locate the Device Identification Label on the device and call the toll-free number (888-273-6989). Please be prepared to provide the information listed on the label.

### Can I continue to call Xerox for support and supplies?

Yes. Continue to call Xerox for support and supplies for Xerox devices until your department is transitioned to Canon.

For more FAQs and information, please visit the Procurement Services website at [buy.nd.edu/contracts/office-equipment](http://buy.nd.edu/contracts/office-equipment).

## In other news ...

### IMPROVE ND SURVEY COMING IN NOVEMBER



Offer your opinions on campus services via the confidential ImproveND survey. Employees will receive an email invitation from Executive Vice President **John**

**Affleck-Graves** with a link to the survey, which will be available from Monday, Nov. 2, through Friday, Nov. 20.

### MUNDY ELECTED TO BOARD OF THE COMMON APPLICATION



Mundy

Director of Admissions **Bob Mundy** has been elected to the Board of Directors for The Common Application ([commonapp.org](http://commonapp.org)), a leading higher education membership organization, by the chief admissions officers at colleges and universities who make up the group's membership. His four-year term runs through August 2019.

to reduce disaster risk and accelerate recovery from disasters.

DADTCO, a cassava processing company, for developing a mobile cassava starch plant for processing fresh cassava close to smallholder farmers, rather than transporting the highly perishable roots over long distances to a central factory. The technology unlocks the opportunity for cassava, a major food crop in Africa, to replace expensive imported cereals and boost the national economy.

BY WILLIAM G. GILROY, MEDIA RELATIONS

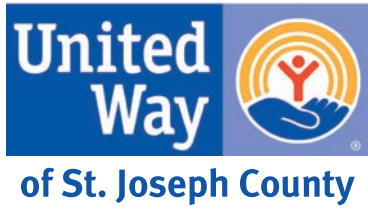
Two innovative projects that address climate change in developing countries have won the coveted 2015 Corporate Adaptation Prize awarded by the **Notre Dame Global Adaptation Index**. Winners include engineering leader AECOM and technology giant IBM, for developing a Disaster Resilience Scorecard to help communities understand, communicate and put into effect actions

## Honoring climate adaptation projects





# LIVE UNITED



**CHANGE** STARTS HERE.  
CAN WE COUNT YOU IN?

## University's annual United Way campaign launches

Last year, generous faculty and staff members supported the United Way's commitment to reduce poverty in our community with donations totaling more than \$320,000.

We're proud to report that over the past three years, the University has raised the most funds among all United Way workplace campaigns in St. Joseph County!

This year's United Way campaign launches early October and runs through Friday, Dec. 4 — the last date requests for donations via payroll deduction can be accepted.

### Your United Way contributions also help co-workers in need

The **Employee Compassion Fund** is a University emergency assistance program funded completely by Notre Dame faculty and staff as part of the annual United Way of St. Joseph County workplace campaign. The fund is administered by the Family and Children's Center.

The Compassion Fund is designed to assist individuals who find themselves in a temporary financial hardship. The granting of funds is designed to either permanently resolve the financial hardship or bridge the individual to a permanent solution to the hardship. For more information, visit [unitedway.nd.edu](http://unitedway.nd.edu).

### Why the focus on poverty?

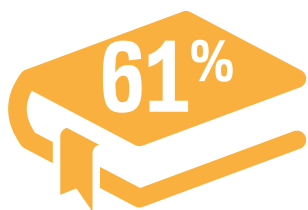
The statistics are startling:



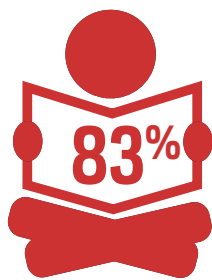
**1 out of every 3 children growing up in St. Joseph County lives in poverty**



**More than 14,000 children in St. Joseph County will go to bed hungry tonight**



**61% of low-income children live without children's books in the home**



**83% of low-income children are unable to read proficiently by the end of 3rd grade**



### Men's Lacrosse: ACC 'Game Changers'

This past year, United Way, Notre Dame and the Atlantic Coast Conference (ACC) celebrated volunteer work the men's lacrosse team performed with local middle-school students.

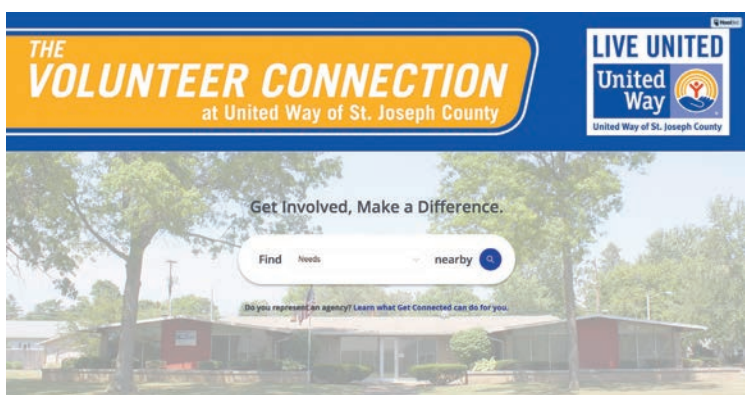
During the fall semester, the student-athletes traveled to Dickinson Fine Arts Academy in South Bend to serve as mentors for 25 seventh- and eighth-grade boys in need of positive role models.

The goal was to improve the children's aspirations and school performance. One morning a week before school, mentors and students engaged in activities centered around sportsmanship, critical thinking and self-motivation.

In the spring, the Dickinson students were invited to campus to dine with lacrosse players, attend practices and cheer for their mentors at home games, which ultimately helped develop higher aspirations for their future.

The players, who went on to win the ACC Championship this spring, were honored as Atlantic Coast Conference/United Way "Game Changers" during the 2015 New York Life ACC Tournament. View a video highlighting the team's service at [unitedway.nd.edu](http://unitedway.nd.edu).

## Community Volunteer Website Now Accepting Volunteer Applicants



In support of United Way of St. Joseph County's mission to actively engage in work and collaborations that will directly impact our community, the United Way has launched a community website for all St. Joseph County nonprofits.

"This is a service that our community needs. After discussions with many local service agencies and employers, United Way of St. Joseph County was ready to take the lead to centralize volunteer opportunities,"

says Matt Harrington, president and CEO for United Way of St. Joseph County.

One of the functions of the site is to align individuals' specific areas of interest and availability with the needs of community nonprofits. The site tabulates hours for each volunteer and, based on their volunteer experiences, develops a volunteer résumé.

"Many area employers are looking forward to the launch of this

website, so they can direct interested employees to volunteer work they will love," says Harrington. "This is also a great way for companies to track the hours of community service employees are performing in the community."

For more information or to participate, visit [uwsjc.org](http://uwsjc.org) and select the "Volunteer" button.



# Beyond the Annual Campaign



University of Notre Dame was recognized as United Way's Company of the Year on August 26, 2015.

For years, the partnership between United Way and the University has extended far beyond the annual campaign. Employees also contribute their time with board membership and representation on the Community Investment, Labor and Financial Stability, and Public Policy Committees.

This past year, three Notre Dame representatives volunteered a significant amount of time by committing to the investment panel process, where recommendations are made regarding division of funds to various programs.

Because of the University's support and commitment, United Way of St. Joseph County present the Company of the Year Award to the University at the United Way's annual Alexis Coquillard Society recognition event in August.

## ND Employees in Partnership with United Way



**Rachel Fulcher-Dawson**  
associate director, Lab for Economic Opportunities  
United Way of St. Joseph County Board of Directors (2015), member of Community Investment Committee and Poverty Strategy Team



**Jessica Brookshire**  
associate director, Public Affairs  
United Way of St. Joseph County's Employee Workplace Campaign Manager for the University of Notre Dame (since 2010), volunteer on Education Investment Panel (2010 - 14), volunteer on Health & Income Basic Needs Investment Panel (2015), member of Community Investment Committee (2015), member of Poverty Strategy Team



**Mark Zeese**  
manager, business processes, Office of the Controller  
United Way of St. Joseph County volunteer on Education Investment Panel (2015) and member of United Way Steering Committee



**Judy Fox**  
clinical professor of law, Law School  
United Way of St. Joseph County Board of Directors (since 2010), Chair Financial Stability Committee (2011), Co-Chair Labor and Financial Stability Committee (2015), member of Policy Committee (since 2014)



**Mike Favorite**  
financial analyst, Office of the Controller  
United Way of St. Joseph County volunteer on Education Investment Panel (2010-15) and member of United Way Steering Committee



**Danielle Wood**  
assistant director for community-based research and impact, Center for Social Concerns  
United Way of St. Joseph County member of Poverty Strategy Team (2015)

**Paul Browne** (pictured top left)  
vice president for Public Affairs and Communications  
United Way of St. Joseph County Board of Directors (2015) and member of Development Committee (2015)



*With the University of Notre Dame's Catholic Mission in our hearts, Fighting Irish Fighting Hunger strives to alleviate hunger in the greater Michiana area by partnering with local programs that distribute food to people in need.*

- Fighting Irish Fighting Hunger Mission Statement



groups: **People Gotta Eat** and the **Food Bank of Northern Indiana**.

**People Gotta Eat** is a group of 11 St. Joseph County food pantries that have banded together under the auspices of United Way of St. Joseph County to share resources and raise awareness and funds together. The necessity of purchasing staples from the Food Bank, even at a reduced cost, can leave the small food pantries with little to use for purchasing meat and produce. Visit [fightinghunger.com](http://fightinghunger.com) for more information or to make an online donation.

**Fighting Irish Fighting Hunger** is the campus-wide food drive, held annually in September, which has been designated Hunger Action Month. The funds collected are divided between two



Visit [UnitedWay.nd.edu](http://UnitedWay.nd.edu) today

**NEED HELP?** | CALL **2-1-1**  
ONE NUMBER. ONE EASY WAY TO FIND HELP.  
Dial 2-1-1 or 1-877-502-0700 to access hundreds of community services. It's FREE, confidential and available 24 hours a day.





Father Jenkins speaks at the fall town hall meetings.

# Town Hall Meetings Fall 2015

## University leaders focus on the future during Town Hall

### Use of coal to be eliminated within five years

BY CIDNI SANDERS,  
INTERNAL COMMUNICATIONS

On Monday, Sept. 21, for the second time in as many weeks, **President Rev. John I. Jenkins, C.S.C.**, stood at a podium before a sea of faces from the Notre Dame community.

"I think there's a lot to be proud of," Father Jenkins said, as he reflected on his first 10 years as president. He thanked faculty and staff for their contributions to the University's progress – from stewardship of the University's resources to internationalization to diversity-and-inclusion efforts.

Father Jenkins' most recent comments were delivered at Washington Hall, during one of four fall Town Hall meetings for staff. Several days earlier, on Sept. 15, he presented his annual Faculty Address at the DeBartolo Performing Arts Center.

Before both audiences, he called attention to three important issues for building a brighter and stronger future for Notre Dame:

- Remaining diligent in efforts to operate as efficiently as possible
- Embracing digital innovation while remaining a traditional, residential campus, and
- Responding to the range of commitments that arise from the University's Catholic mission

Father Jenkins has said that, in the encyclical *Laudato Si'*, Pope Francis "presents us with a comprehensive moral vision about the environment, technology, the character of our communal lives, our responsibility to the poor and marginalized, the dangers of a compulsive consumerism and the need for global solidarity."

Partly in response to the encyclical, Father Jenkins announced that the University will discontinue use of coal in the campus power plant within five years and reduce its carbon footprint by more than half by 2030. The news was met with applause from the audience.

"I'm really happy to hear your applause," he said, "because this is part of our responsibility. We all have to be behind this and concerned about the future of our planet. We're not perfect, but we'll do our best to respond and to hold up the highest ideals and be a witness to the world."

The University has reversed its use of coal from 85 percent to 15 percent of its total fuel input in recent years, with the majority of energy input to the power plant (about 85 percent) now coming from natural gas. During the next five years, Notre Dame will reduce its coal consumption entirely by using more natural gas in the near term and by developing other energy sources in the longer term.

### Campus updates

**John Affleck-Graves**, the University's executive vice president, informed the audience that a

committee has been formed to develop a comprehensive, long-term sustainability strategic plan and will present the plan this fall and winter to University leaders and the board.

"This is not just about emissions, but waste and recycling, water, our buildings and facilities, procurement practices, teaching and education," Affleck-Graves said.

Affleck-Graves also reminded the audience of the need to create an environment of respect and fairness so that everyone feels comfortable sharing their perspectives about what the University is doing well and in what ways we can do better.

"This is enormously important to me. We cannot be the University we want to be if we don't treat everyone with respect and fairness. It's not just that we treat our students and visitors with respect and fairness. It has to start at home, and home is us," he said.

Faculty and staff were instructed of several steps they can take to provide feedback, including discussions with supervisors or HR consultants and calling the Notre Dame Integrity Line.

Affleck-Graves provided examples of how constructive feedback has been used to make positive changes for the Notre Dame community, including creating a faculty-and-staff-only parking section of Bulla Lot and adding some short-term (90 minute) parking spaces in at least two locations across campus.

"This is one of the great things about feedback," said Affleck-Graves. "You give us the information, and

we'll see what we can do about it."

In November, faculty and staff will have the opportunity to participate in the fourth improveND survey and share their experiences regarding a variety of campus services. The survey will be available Nov. 2-20, and each division will receive its results in early spring.

"ImproveND is about how you experience the services we offer. Although you work here, you're a consumer of services, and we need your feedback. It's the only way we can get better," he stated.

Faculty and staff also learned more about ComplyND, a new tool that allows the University to assign and track all required campus compliance training and inspections. In addition, the system will support the reporting of course completion, course pass/fail requirements, overdue assignments and training overviews. ComplyND will include training topics such as sexual harassment, NCAA compliance, fall protection and fire extinguisher use.

### Benefits update

**Bob McQuade**, vice president for human resources, provided highlights of the 2016 medical plans available to faculty and staff. (*More benefits information is available in a special Open Enrollment pullout section of this edition of NDWorks.*)

"My main message to you is to get involved personally with your health choices," said McQuade. "We want you to be more informed, and that's why we are increasing our

educational support. An educated and engaged participant is our best chance of catching problems early on and curbing our health care costs."

He emphasized that all faculty and staff who wish to participate in a University medical plan must make a choice – even those who want to maintain their existing plans. This is a significant change and a step that has not been required in more than 15 years.

Benefit-eligible faculty and staff who do not enroll will not have a medical plan or a Flexible Spending Account for 2016. In addition, they will not be able to participate in the new accident and critical illness insurance plans.

McQuade urged attendees to attend upcoming information sessions to learn more about each plan, including networks, costs and coverage options.

\*\*\*

If you were unable to attend a Town Hall meeting or want to review a portion of the presentations, visit [evp.nd.edu](http://evp.nd.edu) to view a video of the event. The next Town Hall meetings will be held during the spring. If you have topic suggestions or general questions about the University, please contact the Office of the Executive Vice President at [execvp@nd.edu](mailto:execvp@nd.edu).



# NEW FACULTY 2015

105 NEW FACULTY MEMBERS JOINED THE NOTRE DAME FAMILY THIS FALL



New faculty pay a visit to Notre Dame Stadium during orientation.

## COLLEGE OF ARTS AND LETTERS

### Khaled Anatolios



Professor, theology  
**Interests:** Early Christian theology; modern Eastern orthodox theology  
**Course(s):** Foundations of Theology; Development of Trinitarian Doctrine; Early Christian Soteriology

**Recent position/institution:** Professor of theology, Boston College

**Education:** Ph.D., Boston College; M.A., B.A., University of Toronto

**Why Notre Dame:** I chose to join the Notre Dame theology department because it is widely considered to be the strongest theology department in a Roman Catholic institution in North America. I, along with many others, would also consider it to be simply the best theology department in North America, regardless of religious affiliation. I am looking forward to the intellectual stimulation of working with such a talented and diverse faculty.

### Christiane Baumeister



Assistant professor, economics  
**Interests:** The study of time-varying macroeconomic relationships with applications to the global oil market and the effects of conventional and

unconventional monetary policies

**Course(s):** Monetary Policy and Financial Markets

**Recent position/institution:** Principal researcher, Bank of Canada

**Education:** Ph.D., Ghent University (Belgium); M.Sc., KU Leuven (Belgium); M.A., University of Siena (Italy); B.A., University of Bayreuth (Germany)

**Why Notre Dame:** Notre Dame offers an excellent environment for research and teaching. I am excited to join such a vibrant intellectual community.

### Alexander Beihammer



Associate professor, history  
**Interests:** The middle and late Byzantine period; diplomacy, communication, and cross-cultural exchange between Byzantium and the Muslim world; Byzantine-Frankish

contacts in the crusader states and the Eastern Mediterranean

**Course(s):** Survey of Byzantine History Fourth to Tenth Century; a first-year seminar on Christian-Muslim encounters in pre-modern times

**Recent position/institution:** Professor of Byzantine history, University of Cyprus  
**Education:** D.Phil., M.A., University of Vienna

**Why Notre Dame:** I am especially enticed by opportunity to contribute to the establishment of Byzantine studies as part of the broad range of subject areas offered by the Department of History and within the teaching and research activities of the Medieval Institute. In this attractive environment of cultural diversity, I would like to promote the knowledge of Byzantium as both the historical heritage of Greek-Orthodox Christianity and a multicultural entity situated between the Catholic West and the Muslim East.

### Catherine Bronson



Assistant professional specialist, Classics  
**Interests:** How the interpretation and formulation of the Qur'an during the formative period of Islam influenced doctrine, culture and civilization

**Recent position/institution:** Mellon postdoctoral fellow, Beloit College

**Education:** Ph.D., A.M., University of Chicago; Diploma, University of Damascus; B.A., St. Xavier University

### Mariana Candido



Associate professor, history  
**Interests:** African history, early colonialism; comparative slavery, the South Atlantic world, Black Atlantic, human trafficking, imperialism and gender, transatlantic connections and the

African diaspora

**Course(s):** Introduction to African History; Roots of Human Trafficking

**Recent position/institution:** Assistant professor, Department of History, University of Kansas

**Education:** Ph.D., York University, Canada; M.A., El Colegio de México, Mexico; B.A., Universidade Federal do Rio de Janeiro, Brazil  
**Why Notre Dame:** ND support for research in humanities makes it a very attractive place to be, as well as the academic resources and the possibility of collaborating with colleagues concerned with issues relate to social justice. The supportive and friendly faculty were also relevant aspects in my decision to join the University.

### Therese Cory



Assistant professor, philosophy  
**Interests:** Thomas Aquinas; theories of cognition and human nature in medieval philosophy  
**Course(s):** Introduction to Philosophy; Proseminar

**Recent position/institution:** Research fellow, Alexander von Humboldt Foundation, Germany

**Education:** Ph.D., M.A., Catholic University of America; B.Phil., Ave Maria College

**Why Notre Dame:** Stimulating research environment, great colleagues, engaged students and Catholic identity.

### Yacine Daddi Addoun



Assistant professor, history  
**Interests:** Slavery and its abolition in Islam; Saharan communities; trans-Saharan trade and migrations  
**Course(s):** History of Islam in Africa; Slavery in the lands of Islam

**Recent position/institution:** Assistant professor, University of Kansas

**Education:** Ph.D., York University, Toronto; M.A., Ecole nationale des langues et civilisations orientales, Paris; B.A. Institut des sciences politiques et des relations internationales, Algiers

**Why Notre Dame:** Notre Dame is internationally renowned for its support for research as well as its focus on teaching with an emphasis on ethics informed by religious commitment. I am particularly thrilled with the foundation of the Keough School of Global Affairs and its program on the study of global Islam. This is a perfect fit for my interests.

### Darren Dochuk



Associate professor, history  
**Interests:** The United States in the long 20th century, with emphasis on the intersections of religion, politics, and culture, and the rising influence of the North American West and

Sunbelt Southwest in national life

**Course(s):** History of Post-World War II America

**Recent position/institution:** Associate professor, John C. Danforth Center on Religion and Politics and Department of History, Washington University in St. Louis

**Education:** Ph.D., University of Notre Dame; M.A., Queen's University (Canada); B.A., Simon Fraser University (Canada)

**Why Notre Dame:** After receiving my Ph.D. from Notre Dame, I had the privilege of teaching in a large, public university, then in a small, private university; both institutions are stellar, both experiences were rewarding. My decision to come to Notre Dame is not just about "coming home" to a place that has always been special to me (though it is partly that), but about belonging to an institution that bears a unique and distinctive sense of self, and operates within a clear sense of mission to educate the whole person.

### Anselma Dolcich-Ashley



Assistant professional specialist, Glynn Family Honors Program  
**Interests:** Catholic moral theology and ecclesiology, with a particular focus on the Catholic sexual abuse crisis in the US, and theology and ethics of

nature and the environment

**Course(s):** Senior Honors Colloquium; Theology of Nature and the Environment

**Recent position/institution:** Adjunct assistant professional specialist, University of Notre Dame

**Education:** Ph.D., University of Notre Dame; M.Div., Weston Jesuit School of Theology; M.S., B.S., Georgetown University

**Why Notre Dame:** As an adjunct faculty member, I have found Notre Dame students to be bright, involved and motivated to improve the world. The faculty and staff are incredibly supportive, and the intellectual environment fosters a commitment to individual research as well as the common good.

### William Collins Donahue



The Rev. John J. Cavanaugh, C.S.C., Professor of the Humanities, College of Arts and Letters; chair, Department of German and Russian Languages and Literatures

**Interests:** Holocaust literature and film; German Jewish literature and film, literature and religion, literature and secularism(s); Modernism, German poetic realism

**Course(s):** German Studies Senior Seminar: The Modern(ist) Assault on the Self

**Recent position/institution:** Bishop-McDermott Professor of Germanic Languages & Literature, Duke University

**Education:** Ph.D., Harvard University; M.A., Middlebury College; M.T.S., Harvard University; BSFS, Georgetown University

**Why Notre Dame:** My wife, Marie, and I chose to come to Notre Dame because of this University's great ambition, energy and sense of community. Notre Dame seems to be a place where faculty and students want to make a difference in the world, and where faculty reflect not only upon what we teach, but why we teach. It combines first-rate research with dedicated teaching and generous service to the community and beyond.

### Michael Elwell



Assistant professional specialist, art, art history and design

**Interests:** The changing role of the designer as entrepreneur

**Course(s):** Product Design Research, Digital Solid Modeling, ID

Entrepreneurship

**Recent position/institution:** Visiting assistant professional specialist, University of Notre Dame

**Education:** MFA, University of Illinois at Urbana-Champaign; BFA, University of Notre Dame

**Why Notre Dame:** Notre Dame's social design focus sets it apart from other design institutions. Also, I am a graduate ('05) of the Notre Dame design program, and it feels good to be home.



**Chloe Gibbs**

Assistant professor, economics  
**Interests:** The economics of education and child and family policy, particularly the impact of early childhood investments and interventions on children living in poverty  
**Recent position/institution:** Assistant professor, Batten School of Leadership and Public Policy, University of Virginia  
**Education:** Ph.D., M.A., University of Chicago MPP, University of Michigan; B.A., University of Notre Dame  
**Why Notre Dame:** *As a Notre Dame alumna, I feel at home on campus and am thrilled to be back at this special place. I am excited to join the vibrant and growing Department of Economics and to be involved with the important work of the Wilson Sheehan Lab for Economic Opportunities, conducting applied research to combat poverty. My work on the impact of early childhood investments and programs in remediating early life disadvantage is well aligned to those efforts.*

**Rev. Gregory Haake, C.S.C.**

Assistant professor, romance languages and literatures  
**Interests:** I work on the intersection of literature, politics, and religion in sixteenth century France. In my dissertation, I concentrated on the manipulation of meaning for political ends during the French Wars of Religion, a dynamic that extended to poetry, theater, history, and other literature of the period. I have published on and maintain an interest in lyric poetry, especially that of Maurice Scève and the Pléiade, and I have more recently begun examining notions of equality in the early modern period.

**Course(s):** Advanced Composition: The Art of Writing  
**Recent position/institution:** Graduate student, Stanford University  
**Education:** Ph.D., Stanford University; M.A., Middlebury College; M.Div., B.A., University of Notre Dame  
**Why Notre Dame:** *I am a Holy Cross priest, and as a member of the founding religious congregation of Notre Dame, I am proud to participate in the University's mission as a Catholic institution of higher learning.*

**Heather Hyde Minor**

Associate professor, art, art history and design  
**Interests:** Art and architecture of early modern Europe; 18th-century Rome; print culture, the prehistory of art history  
**Recent position/**

**institution:** Associate professor, University of Illinois at Urbana-Champaign  
**Education:** Ph.D., M.A., Princeton University; A.B., Mount Holyoke College  
**Why Notre Dame:** *Notre Dame's excellent faculty and students from across departments and disciplines impressed me from the first moment I arrived on campus. It is so exciting to be a member of an intellectual community in which the humanities are nurtured. I can't imagine a better place for me, and for my research.*

**Robin Jensen**

Patrick O'Brien Professor of Theology  
**Interests:** The intersections among early Christian theology, liturgical practice and material/visual culture  
**Course(s):** Foundations of Theology Seminar;

Introduction to Early Christian and Byzantine Art  
**Recent position/institution:** Luce Chancellor's Professor of the History of Christian Worship and Art, Vanderbilt University  
**Education:** Ph.D., M.A., Columbia University; B.A., Concordia College, Minnesota  
**Why Notre Dame:** *I am impressed by the emphasis on interdisciplinary research and teaching at Notre Dame. I am eager to engage colleagues in various fields, but especially in building links between Departments of Theology and Art, Art History and Design as well as being part of an emerging, interdisciplinary program in Byzantine studies. I also look forward to*

*working with the staff of the Sinite Museum and being involved in the University's excellent global gateway program in Rome.*

**Michael Kackman**

Associate professional specialist, film, television, and theatre  
**Interests:** Television history and criticism, US Cold War culture, popular history and memory practices  
**Course(s):** History of

Television; Cold War Media Culture, The Popular Past: History and Memory in Everyday Life  
**Recent position/institution:** Visiting associate professional specialist, University of Notre Dame  
**Education:** Ph.D., M.A., University of Wisconsin-Madison; B.A., Emerson College  
**Why Notre Dame:** *I'm delighted to find such a good fit for my interests — I'm principally a television scholar, but with deep roots in film and theater. I'm pleased, too, to find such rich connections between my home department and other departments within Arts and Letters, and across the University.*

**Karrie J. Koese**

Associate professor, political science  
**Interests:** Contemporary Chinese and Russian politics, authoritarianism and religion and politics  
**Course(s):** The Politics of China; Despots, Dictators and Democrats

**Recent position/institution:** Associate professor of political science, University of Oregon  
**Education:** Ph.D., M.A., Cornell University; M.A., University of Notre Dame; B.A., Drake University  
**Why Notre Dame:** *Notre Dame immediately appealed to me because of the strength and depth for the study of religion and politics across the University as well the long tradition of excellence in teaching and research.*

**Elisabeth Koll**

Associate professor, history  
**Interests:** Business and economic history of greater China and East Asia, mid-19th century to the present; history of economic and business institutions in global perspective; comparative

history of industrialization, technology transfer and engineering; infrastructure development, especially railroads  
**Course(s):** From Mao to Market: China's Long 20th Century; Shanghai Confidential: Colonialism, Communism, Capitalism and the Making of a Global Hub  
**Recent position/institution:** Associate professor, Harvard Business School  
**Education:** D. Phil., University of Oxford; M.A., University of Bonn (Germany); B.A., Fudan University (China)  
**Why Notre Dame:** *I look forward to making a difference through teaching and research in a collaborative environment and contributing to Notre Dame's new initiatives for international engagement, especially with regard to China and East Asia.*

**John Liberatore**

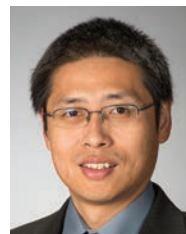
Assistant professor, music  
**Interests:** Composition, electronic music, improvisation, early music  
**Course(s):** Harmony and Voice Leading, Counterpoint, 20th Century Music  
**Recent position/**

**institution:** Visiting assistant professor of music, University of Pittsburgh at Bradford  
**Education:** Ph.D., M.M., Eastman School of Music; B.M., Syracuse University  
**Why Notre Dame:** *More than any University I've visited, the students I met at Notre Dame during my interview were intellectually curious and self-motivated. Notre Dame is uncommonly supportive of faculty research without compromising its commitment to student education. Notre Dame, I believe, will be auspicious environment for my personal betterment as both an artist and an educator.*

**David Lincicum**

Associate professor, theology  
**Interests:** The New Testament, and particularly the early Christian reception and appropriation of Jewish Scripture as Christian sacred text, and the role of

the Bible in intellectual history  
**Course(s):** Foundations of Theology; The Gospel of Mark  
**Recent position/institution:** Associate professor, University of Oxford  
**Education:** D.Phil., University of Oxford; M.A., Wheaton; B.A., Whitworth  
**Why Notre Dame:** *I've long admired Notre Dame and its Theology Department as a place where serious critical scholarship is undertaken in a spirit of open inquiry and hospitality to faith. It's a combination that is all too rare, and I am delighted to be joining colleagues in this endeavor.*

**Cheng Liu**

Research assistant professor, psychology and CRC  
**Interests:** Computational modeling and data mining, and their applications in psychology, biology and computer engineering

**Recent position/institution:** Fellow, Institute for Educational Initiatives, University of Notre Dame  
**Education:** Ph.D., M.S., University of Illinois at Urbana-Champaign; B.A., B.E., University of Science and Technology of China  
**Why Notre Dame:** *I heard many great things about ND from my wife, who started her job here three years before me. So when an opportunity arose for me to join ND, I immediately took it and it has been great ever since.*

**Joshua Lund**

Associate professor, romance languages and literatures  
**Interests:** Latin American literature, film and cultural politics; regional specialization: Mexico, Brazil, Colombia. Some recent research topics

include: trans-national and historical film; the culture and aesthetics of paramilitarism; aesthetic practices and capitalist development; race and space; sovereignty  
**Course(s):** Mexican Cinema; Men with Guns: Cultures of Paramilitarism and the Modern Americas  
**Recent position/institution:** Associate professor, University of Pittsburgh  
**Education:** Ph.D., M.A., University of Minnesota; B.A., Gustavus Adolphus College  
**Why Notre Dame:** *I came to Notre Dame for the opportunity to work with the talented students at a great scholarly institution with a deep sense of history, identity and social mission. I admire the profound balance that Notre Dame exhibits in its commitment to the highest level of teaching, research, community building, and service to the world. As a specialist in Latin America appointed to the Department of Romance Languages and Literatures, the chance to collaborate and create with students and colleagues in Spanish, French, Italian and Portuguese — fields whose socio-historical reality is so intimately linked to the spiritual identity of Notre Dame — is nothing less than an honor.*

**Ian Newman**

Assistant professor, English  
**Interests:** Eighteenth and 19th-century British and Irish literature; popular radicalism; sociability; popular song  
**Course(s):** The Popular

**Recent position/**  
**institution:** Postdoctoral research fellow, University of Notre Dame  
**Education:** Ph.D., M.A., University of California, Los Angeles; M.A., B.A., University of Cambridge  
**Why Notre Dame:** *In recent years Notre Dame has been committed to hiring and supporting young scholars who are doing innovative work rethinking the possibilities of literary study. I'm drawn to Notre Dame by the combination of institutional support for junior faculty and a vibrant community of committed colleagues.*

**Lisa Oglesbee**

Assistant professional specialist, Center for the Study of Languages and Cultures  
**Interests:** The integration of Second Language Acquisition theories and practice, as well as the effects of perception training on production intelligibility and accentedness.

**Course(s):** Academic and Technical Writing for International Graduate Students, Pronunciation Strategies for English Language Learners, Pedagogical English Grammar  
**Recent position/institution:** TESOL Instructor, Bethel College  
**Education:** M.A., Indiana University; B.A., Bethel College  
**Why Notre Dame:** *Notre Dame offered me the chance to contribute to world-class scholarship through enhancing the English skills of international students.*

**Natalie Porter**

Assistant professor, anthropology  
**Interests:** Science, technology & medicine, global health, pandemics, multispecies anthropology, Southeast Asia, Vietnam  
**Recent position/**

**institution:** Assistant professor of anthropology, University of New Hampshire  
**Education:** Ph.D., M.A., University of Wisconsin-Madison; B.A., University of California, Santa Barbara  
**Why Notre Dame:** *Notre Dame struck me as a university that truly fosters collaboration, both within and across disciplines, and between students and faculty. I am delighted to be joining an intellectual community that encourages trans-disciplinary thinking as well as socially engaged research, and look forward to working with colleagues and students to advance my scholarship and increase its impact beyond the academy.*

**Evan Ragland**

Assistant professor, history  
**Interests:** The history of science and medicine in early modern Europe  
**Course(s):** Science and Religion in History, Experiment, Survey of the History of Science

**Recent position/institution:** Assistant professor, University of Alabama in Huntsville  
**Education:** Ph.D., M.A., Indiana University, Bloomington; B.S., Hillsdale College  
**Why Notre Dame:** *Notre Dame offers the chance to cultivate excellence in thinking about questions concerning all dimensions of the human experience. The History Department and the program in the History and Philosophy of Science have long excelled in historical and philosophical analysis of science and medicine; I hope to enliven and enrich these communities as I learn and serve in them. Students at other institutions can go hungry, waiting for close engagement with matters of faith and morals. Here, I hope our top-notch students find the necessities for real human flourishing.*

**Michael Schreffler**

Associate professor, art, art history and design  
**Interests:** Art and Architecture of early modern Spain and Latin America  
**Course(s):** Art and Architecture of Colonial Peru

**Recent position/institution:** Associate professor, Department of Art History, Virginia Commonwealth University  
**Education:** Ph.D., University of Chicago  
**Why Notre Dame:** *Long ago, when I was a young student in Catholic school, Notre Dame loomed large in my mind as an educational ideal. It is a great pleasure to join the faculty. I value the University's strong commitment to the study of the liberal arts.*



**Forrest Spence**



Assistant professional specialist, economics  
**Interests:** Applied microeconomics; empirical industrial organization; health economics  
**Course(s):** Principles of Microeconomics  
**Recent position/institution:** Graduate student, University of North Carolina, Chapel Hill  
**Education:** Ph.D., University of North Carolina, Chapel Hill; B.S., University of South Carolina, Columbia  
**Why Notre Dame:** *Notre Dame offered me a chance to focus on teaching in an environment with great students and cutting-edge economics research.*

**Zachary Stangebye**



Assistant professor, economics  
**Interests:** International Finance and Macroeconomic Finance  
**Course(s):** International Macroeconomics  
**Recent position/institution:** Graduate research analyst, Federal Reserve Bank of Philadelphia  
**Education:** Ph.D., M.S., University of Pennsylvania; B.S., University of Michigan  
**Why Notre Dame:** *I chose to Notre Dame for both professional and personal reasons. Professionally, Notre Dame has an excellent reputation and my colleagues here are superlative researchers and instructors; and personally, I was drawn to the strong Catholic identity of Notre Dame and the real chance to integrate my faith with my work life.*

**Nicholas Teh**



Assistant professor, philosophy  
**Interests:** Philosophy of science and philosophy of physics, as well as their intersections with metaphysics  
**Course(s):** Philosophy and Science; Capacities and Foundations of Quantum Mechanics  
**Recent position/institution:** Research fellow, University of Cambridge  
**Education:** Ph.D., University of Cambridge; M.A., University of Pittsburgh; A.B., Princeton University  
**Why Notre Dame:** *I chose to come to Notre Dame because of the Philosophy Department's research excellence, as well as its strong commitment to teaching at both the graduate and undergraduate level.*

**Lorenzo Valterza**



Assistant professional specialist, romance languages and literatures  
**Interests:** Italian medieval literature  
**Recent position/institution:** Visiting assistant professor of Italian, University of

Notre Dame  
**Education:** Ph.D., M.A., Rutgers University; B.A., California State University, Sacramento  
**Why Notre Dame:** *I am excited to join Notre Dame because of its rich intellectual traditions in all disciplines, and its intense dedication to providing an outstanding education to all of its students.*

**Susanne Wengle**



Assistant professor, political science  
**Interests:** The politics of markets regulations; agriculture and food production in Russia and the United States  
**Course(s):** Comparative and International Political Economy, Political Economy of Food and Agriculture  
**Recent position/institution:** Lecturer, University of Chicago  
**Education:** Ph.D., University of California, Berkeley; MIA, Columbia University; B.Sc., London School of Economics  
**Why Notre Dame:** *Notre Dame offers excellent resources for research and draws some of the brightest, most motivated students. I look forward to teaching and conducting research in this community.*

**COLLEGE OF ENGINEERING**

**Susanta Behura**



Research assistant professor, computer science and engineering  
**Interests:** Bioinformatics, genomics, disease, data science  
**Recent position/institution:** Postdoctoral student, University of Illinois, Urbana-Champaign  
**Education:** Ph.D., Utkal University (India); M.Sc., GNDU (India); B.Sc., Utkal University (India)  
**Why Notre Dame:** *I see unique opportunities at Notre Dame to excel my career interest in interdisciplinary research in health.*

**Gianluca Blois**



Research assistant professor, aerospace and mechanical engineering  
**Interests:** Environmental fluid mechanics  
**Recent position/institution:** Postdoctoral research associate, University of Illinois at Urbana-Champaign  
**Education:** Ph.D., M.S., Polytechnic University of Milan  
**Why Notre Dame:** *I was mainly attracted by the prestige of the Fluid Dynamics group, which is a very unique and active group in my field, involving several world-class researchers across departments.*

**Peter Bui**



Assistant professional specialist, computer science and engineering  
**Interests:** Distributed and parallel computing, systems programming, and web services with applications in scientific and cloud computing  
**Course(s):** Script-based Programming I; Discrete Mathematics; Data Structures  
**Recent position/institution:** Assistant professor, computer science, University of Wisconsin-Eau Claire  
**Education:** Ph.D., M.S., B.S., University of Notre Dame  
**Why Notre Dame:** *As a triple Domer, returning to Notre Dame is in many ways a homecoming for me. My wife and I both attended Notre Dame and love the community here. Notre Dame is a place that values teaching, learning, and reflection. It aims to develop the whole person (i.e. mind, hands, and heart). I firmly share these values and am honored to be a part of the Notre Dame experience for future Domers.*

**Thomas Degnan**



Tony and Sarah Earley Professor of Energy and the Environment  
**Interests:** Heterogeneous catalysis, mesoporous and microporous materials as catalysts and absorbents, zeolite chemistry, petroleum processing and petrochemical manufacture, hydrocarbon catalytic chemistry, catalyst characterization  
**Course(s):** Industrial Chemical Processes; Chemical Process Design  
**Recent position/institution:** Manager, New Leads and Breakthrough Research, ExxonMobil Research and Engineering  
**Education:** Ph.D., University of Notre Dame; MBA, University of Minnesota; B.S., University of Notre Dame  
**Why Notre Dame:** *I am an alumnus (B.S. ChemE, '73). My brother and all three of our children graduated from Notre Dame (Thomas '05, Kathleen '06, and Matthew '09, '10). I was a member of the College of Engineering Advisory Council for nine years. I feel that Notre Dame provides and excellent education anchored in Catholic values. Notre Dame is well on its way to realizing its goal of being recognized as the preeminent Catholic research university. I would like to use my 35+ years of industrial research and development and research management experience to help Notre Dame achieve its vision. Most tangibly, I hope that I can help Notre Dame's undergraduate and graduate chemical engineering students achieve their true potential.*

**Ronald Metoyer**



Associate professor, computer science  
**Interests:** Information visualization, human computer interaction  
**Course(s):** Human Computer Interaction  
**Recent position/institution:** Associate professor of computer science, School of EECS, Oregon State University  
**Education:** Ph.D., Georgia Institute of Technology; B.S., University of California, Los Angeles  
**Why Notre Dame:** *I visited Notre Dame over a year ago and was impressed in so many ways. The faculty, the students, and the campus were all amazing. I was especially drawn to the clear commitment to research and education excellence and the drive to do good in the world.*

**Michael Ryan**



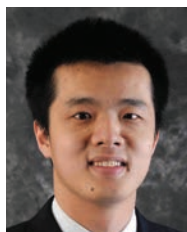
Assistant professional specialist, dean's office College of Engineering, assistant dean of academic affairs  
**Interests:** Notre Dame-Navy history  
**Recent position/institution:** CO Naval ROTC Unit, University of Notre Dame  
**Education:** M.A., Naval Postgraduate School; B.S., University of Notre Dame  
**Why Notre Dame:** *Being able to work with some of the finest men and women our country has to offer was one of the highlights of my 30-year career in the United States Navy. Having the opportunity to continue working with the best of the best of our country's young adults was one of the primary reasons I chose to stay here at ND after transitioning from the Navy.*

**Walter Scheirer**



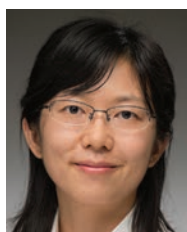
Assistant professor, computer science and engineering  
**Interests:** The fundamental problem of recognition, including the representations and algorithms supporting solutions to it  
**Course(s):** Biometrics  
**Recent position/institution:** Postdoctoral fellow, Harvard University  
**Education:** Ph.D., University of Colorado; M.S., B.A., Lehigh University  
**Why Notre Dame:** *Notre Dame is an outstanding institution with phenomenal resources. I came to this university to do great work with an unparalleled student body and faculty.*

**Yiyu Shi**



Associate professor, computer science and engineering  
**Interests:** Three-dimensional integration, hardware security, data analytics  
**Recent position/institution:** Assistant professor, Missouri University of Science and Technology  
**Education:** Ph.D., M.S., University of California, Los Angeles; B.S., Tsinghua University  
**Why Notre Dame:** *I really like the environment at Notre Dame, where close interactions between faculty and students are common. The research infrastructure also fits well with my area of interest.*

**Na Wei**



Assistant professor, civil and environmental and earth sciences  
**Interests:** Microbial and molecular biology aspects of fate and degradation of emerging environmental contaminants in both natural and engineered water systems; and "waste-to-value" biotransformation and next-generation renewable biofuel production using metabolic engineering approaches  
**Course(s):** Introduction to Environmental Engineering  
**Recent position/institution:** Assistant professor, University of Pittsburgh  
**Education:** Ph.D., M.S., University of Illinois at Urbana-Champaign; B.S., Sichuan University (China)

**Why Notre Dame:** *The Department of Civil and Environmental Engineering and Earth Sciences are very active in the research areas that complement my research interests quite well, and the vision of ND Energy also aligns well with my research interests.*

**Thanuka Wickramaratne**



Research assistant professor  
**Interests:** Multi-sensor data fusion, distributed inference, big-data, complex networks, estimation and detection  
**Education:** Ph.D., M.S., University of Miami, Coral Gables; B.Sc., University of Moratuwa (Sri Lanka)

**COLLEGE OF SCIENCE**

**Heidi Beidinger-Burnett**



Assistant professional specialist, biological sciences  
**Interests:** Community-based health research and epidemiology with a particular interest in HIV  
**Course(s):** Leadership: Theory, Discovery and Application  
**Recent position/institution:** I was a consultant for 12 years prior to coming to Notre Dame. I owned my own consulting firm called SMK Consulting, Inc.  
**Education:** Ph.D., Western Michigan University; M.A., University of Illinois at Chicago; B.S., Indiana University  
**Why Notre Dame:** *My interests and educational background are varied. I worked for the Centers for Disease Control for 13 years focused on public health in correctional health care settings and community health centers. I then developed a keen interest in K-12 education focusing on leadership, curriculum development and student achievement. My appointment at Notre Dame in the Master of Science in Global Health program blends my interests and affords me the opportunity to continue to explore and to conduct research in these areas.*

**Daniela Carollo**



Research assistant professor, physics  
**Interests:** Near field cosmology; galactic archaeology  
**Recent position/institution:** Department of Physics and Astronomy, Macquarie University,

**Sydney**

**Education:** Ph.D., Australian National University  
**Why Notre Dame:** *The department of physics at Notre Dame is the perfect place to pursue my research, in particular for the interdisciplinary environment offered (nuclear astrophysics and astronomy). The high moral values adopted at the University were also a strong motivation for the choice of Notre Dame.*

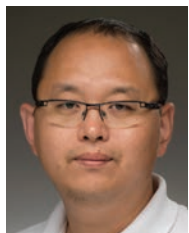
**Marie Donahue**



Associate professional specialist, biological sciences; director of the Notre Dame Haiti Program  
**Interests:** Neglected tropical diseases, biosocial perspectives in global health

**Recent position/institution:** Clinical mentor; Rwanda Human Resources for Health Program/Clinton Health Access Initiative  
**Education:** MPH, Harvard University; M.S., Columbia University; BSN, Catholic University of America  
**Why Notre Dame:** *I chose to work at Notre Dame because of the University's commitment to social justice issues. I am inspired by people across all disciplines in the ND community who strive to use their gifts to serve those most in need in the world.*



**Ick Hoon Jin**

Assistant professor, applied and computational mathematics and statistics  
**Interests:** Statistical analysis of networks, Bayesian spatial data analysis, Markov chain Monte Carlo method, Bayesian adaptive clinical

trial

**Course(s):** Topics in Statistics

**Recent position/institution:** Research scientist, Ohio State University Wexner Medical Center

**Education:** Ph.D., Texas A&M University; M.S. and B.S., Yonsei University

**Why Notre Dame:** *I feel very proud to be a tenure-track faculty member at Notre Dame.*

**Manuela Lahne**

Research assistant professor, biological sciences

**Interests:** Regeneration of the nervous system

**Recent position/institution:** Postdoctoral research assistant, Department of Biological

Sciences, University of Notre Dame

**Education:** Ph.D., University College London

**Why Notre Dame:** *Continuing at the University as a research assistant professor I will be able to perform my research on retinal regeneration in an unique and thriving environment at the emerging Center for Stem Cell research which will allow me to interact with experts of different backgrounds in stem cell biology and ethics. I am also thrilled to have the opportunity to share my enthusiasm for stem cell research and regeneration with some of the brightest students in the world while teaching and mentoring them. As a postdoc I also began to value that Notre Dame is not only a work place but a caring family.*

**Abigail Mechtenberg**

Assistant professional specialist, physics  
**Interests:** Global sustainable energy systems  
**Course(s):** Physics 31210/31220

**Recent position/institution:** Assistant professor of physics and

environmental studies, Colgate University

**Education:** Ph.D., M.S., University of Michigan; M.Ed., University of California, Santa Barbara; B.S., Texas A & M University

**Why Notre Dame:** *As an Eastern Orthodox Christian married to a wonderful Catholic whose family is from Niles, Michigan, I was thrilled to be in a physics department that would value my energy and sustainable development research in Uganda and have chapels to pray in during the work day.*

**Bruce Melancon**

Research assistant professor, chemistry and biochemistry  
**Interests:** Drug discovery, medicinal chemistry, organic synthesis, pharmacology  
**Recent position/institution:** Research

instructor, Department of Pharmacology,

Vanderbilt University School of Medicine

**Education:** NIH Postdoctoral Fellow, Vanderbilt University; Ph.D., University of Notre Dame; B.S., Louisiana State University and A&M College

**Why Notre Dame:** *Notre Dame is a great place to do scientific research. With a strong history of research excellence in chemistry, the newly formed Warren Family Center for Drug Discovery and Development offered me a unique academic research opportunity. As director of the Chemical Synthesis and Drug Discovery Facility, its members and I are positioned to expand the bandwidth of Notre Dame researchers through assistance with project development, chemical synthesis expertise and core facility instrumentation offered to the Notre Dame community.*

**Nancy Michael**

Assistant professional specialist, biological sciences

**Interests:** Behavioral neuroendocrinology, pubertal gonadal hormone-dependent refinement of affective circuits during adolescence; discipline-

based education research to improve active pedagogical practices and student learning in the undergraduate classroom

**Course(s):** Neuroscience and Behavior Laboratory, Developmental Neuroscience

**Recent position/institution:** Postdoctoral fellow, Michigan State University

**Education:** Ph.D., University of Minnesota; B.S., Western Michigan University

**Why Notre Dame:** *I chose to come to Notre Dame to help build the new Neuroscience and Behavior major — an interdisciplinary effort between the College of Arts and Letters and the College of Science. To be involved in the development of the major from some of the earliest stages of program and curricular development was an opportunity that I could not pass up. Notre Dame's mission is also very aligned with my personal beliefs, so it was certainly a strong selling point that outreach and community engagement are not only encouraged, but supported. I am thrilled to join the Notre Dame community as the Director of Undergraduate studies and advisor for the students pursuing a Bachelor's of Science.*

**Vinicius Moris Placco**

Research assistant professor, physics  
**Interests:** Galactic archaeology, stellar astrophysics, observational astronomy, nuclear astrophysics  
**Recent position/institution:** Science fellow

at the Gemini Observatory, Hawaii  
**Education:** Ph.D., M.S., B.S., Universidade de São Paulo

**Why Notre Dame:** *I chose Notre Dame because of its commitment to excellence in both research and education. In addition, the Department of Physics hosts the Joint Institute for Nuclear Astrophysics—Center for the Evolution of the Elements, which plays a major role in my research. I am really happy to be part of this great community.*

**Jennifer Schaefer**

Assistant professor, chemical and biomolecular engineering  
**Interests:** Materials and interfaces in energy storage devices, ion transport mechanisms, soft materials and composites  
**Course(s):** Energy,

Economics, and Environment

**Recent position/institution:** NRC

Postdoctoral Fellow at the National Institute of Standards and Technology

**Education:** Ph.D., Cornell University; M.Eng., B.Ch.E., B.S., Widener University

**Why Notre Dame:** *I chose to join the Notre Dame community for their commitment to be "a powerful force for good," and the strong, ongoing support of faculty and research.*

**Katherine Taylor**

Professional specialist, College of Science; director of Global Health Training and associate director, Eck Institute for Global Health, professor of the Practice, Department of Biological Sciences

**Interests:** Infectious

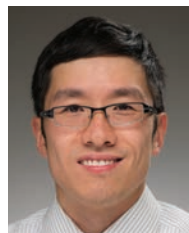
diseases, global health, health systems strengthening

**Course(s):** Global Health Challenges

**Recent position/institution:** Director of Operations, Eck Institute for Global Health, research professor, Department of Biological Sciences, University of Notre Dame

**Education:** Ph.D., Vrije University; M.Sc., University of Notre Dame; B.Sc., Purdue University

**Why Notre Dame:** *I joined the ND faculty in 2009 for the opportunity to be involved in building new programs in global health and the Eck Institute for Global Health. I am a Notre Dame alum and South Bend is my hometown, so it was an opportunity to return "home."*

**Jeffrey Zheng**

Assistant professional specialist, applied computational

mathematics and statistics  
**Interests:** Actuarial science: probability, theory of interest, financial economics, loss models  
**Course(s):** ACMS 40790-

11 (Topics in Financial Economics) & 40790-21 (Loss Models I)

**Recent position/institution:** Coordinator of actuarial excellence and lecturer, Roosevelt University

**Education:** M.A., Harvard Graduate School of Education; M.A., University of Michigan Ross School of Business; B.S., University of Michigan Ann Arbor

**Why Notre Dame:** *I was drawn to the entrepreneurial opportunity and challenge to take the actuarial science program at one of the premier global education institutions to the next level. Notre Dame's mission, and specifically its focus on fighting injustice and promoting the common good through scholarship, faith, and service resonates strongly with me. I am excited to be a part of this community that is nurturing the future leaders of industry and academia with strong ethics and character.*

**MENDOZA COLLEGE OF BUSINESS****Mary Bales**

Research assistant professor, management  
**Interests:** My interests include conducting mixed-methods research in the context of flourishing and wellbeing at work in the helping professions, with attention to the factors that contribute to meaningful, life-enriching work.

**Recent position/institution:** Postdoctoral scholar, University of Notre Dame

**Education:** Ph.D., M.S., Purdue University; B.A., Indiana University

**Why Notre Dame:** *The Notre Dame community offers an opportunity to engage in rigorous research with outstanding colleagues across departments. The fit between my core values and Notre Dame's mission align, and the opportunities for personal and professional growth are ubiquitous.*

**Yiting Deng**

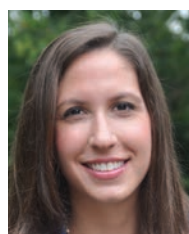
Assistant professor, marketing  
**Interests:** My research is in the area of quantitative marketing. I apply empirical modeling techniques to marketing data in solving consumer choice and firm decision

problems.

**Recent position/institution:** Ph.D. candidate, Duke University

**Education:** Ph.D., M.S., Duke University; M.A., B.A., B.S., Peking University

**Why Notre Dame:** *I chose to come to Notre Dame because of the supporting environment, collegial colleagues and beautiful campus.*

**Emily Garbinsky**

Assistant professor, marketing  
**Interests:** Consumer financial decision making, with an emphasis on the psychology of saving  
**Course(s):** Principles of Marketing  
**Recent position/institution:** Doctoral candidate, Stanford

University Graduate School of Business

**Education:** Ph.D., Stanford University Graduate School of Business; B.S., Carnegie Mellon University

**Why Notre Dame:** *I was attracted to Notre Dame because of its commitment to supporting research at the highest level, its strong emphasis on teaching, and its overwhelming sense of school spirit. Go Irish!*

**Peter Kelly**

Assistant professor, finance  
**Interests:** Behavioral finance

**Course(s):** Behavioral Finance

**Recent position/institution:** Doctoral student at Yale University  
**Education:** Ph.D., M.A.,

M.Phil., Yale University; B.S., University of Notre Dame

**Why Notre Dame:** *I like the fact that a large fraction of the Notre Dame community is devoted to community service. I like the academic environment here and I enjoy the indescribable spirit of Notre Dame.*

**Taehyun "Tae" Kim**

Assistant professor, finance  
**Interests:** Corporate finance

**Course(s):** Mergers and Acquisitions

**Recent position/institution:** University of Illinois

**Education:** Ph.D., M.A., B.A., Yonsei University

**Why Notre Dame:** *It is Notre Dame.*

**Scott Nestler**

Associate professional specialist, management  
**Interests:** Operations research/management science (simulation, optimization, decision analysis); business analytics; sports analytics; workforce and talent analytics

**Course(s):** Business Statistics, Business Intelligence, Sports Analytics

**Recent position/institution:** Assistant professor, Naval Postgraduate School

**Education:** Ph.D., University of Maryland; M.S., Naval Postgraduate School; B.S., Lehigh University

**Why Notre Dame:** *The nine-word mantra that guides me is, "Make yourself useful, doing something hard, with good people." (Kelly Corrigan) After retiring from the U.S. Army with 25-plus years of service, Notre Dame appealed to me as a place where I can continue to strive to achieve that goal. When I visited campus in the middle of winter and later in the spring, everybody (to include the parking office!) was very friendly and welcoming, even those who didn't know I was there for an interview. I enjoyed teaching and mentoring motivated students at West Point and look forward to doing the same at Notre Dame.*

**Andreas Neuhierl**

Assistant professor, finance  
**Interests:** Empirical asset pricing, commodity markets, financial econometrics

**Course(s):** Investment Theory

**Recent position/institution:** Kellogg

School of Management, Northwestern University

**Education:** Ph.D., Northwestern University; Dr. rer. pol., Diplomkaufmann

**Why Notre Dame:** *In my decision to join ND, I drew a lot on the experience of past Kellogg graduates who have since gone on to successful careers. I appreciate the research oriented culture and collegiate environment in the department.*

**Sam Ranzilla**

Associate professional specialist, accountancy  
**Course(s):** Auditing and Assurance Services, International Financial Reporting Standards

**Recent position/institution:** National managing partner, Audit

Quality and Professional Practice, KPMG LLP

**Education:** M.S., University of Notre Dame; B.S., University of Detroit

**Why Notre Dame:** *I share the University's mission and devotion to the broad education of young adults. This represents a second career for me after my retirement from the public accounting profession, and an opportunity to share my knowledge with the next generation of business leaders. Notre Dame was the only institution I considered in pursuing this opportunity — I want to be a part of something special, and Notre Dame is special.*



**Jason Reed**

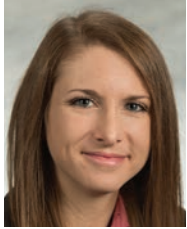


Assistant professional specialist, finance  
**Interests:** Behavioral macroeconomics, economics pedagogy  
**Course(s):** FIN 30210, FIN 60210  
**Recent position/institution:** Graduate

student, Wayne State University  
**Education:** Ph.D., M.A., Wayne State University; B.A., B.S., Grand Valley State University

**Why Notre Dame:** *Notre Dame provided me with the opportunity to fulfill both my research and teaching interests. Not only that, but the collegial atmosphere around campus is extremely inspiring. Their record of dedication to students, in and out of the classroom, was second to none and something that I wanted to be a part of.*

**Brittany Solomon**



Research assistant professor, management  
**Interests:** Personality, social perception, and meta-cognitive skills in organizational contexts  
**Course(s):** Principles of Management  
**Recent position/institution:** Doctoral student, Washington

University in St. Louis  
**Education:** Ph.D., M.A., Washington University in St. Louis; B.A., University of Arizona

**Why Notre Dame:** *There are many reasons why coming to Notre Dame was an easy decision to make. I was especially attracted to the University given its outstanding reputation for collegiality and productivity. I'm very much looking forward to contributing to such an exceptional research- and teaching-oriented environment.*

**Sriram Somanchi**



Instructor, management  
**Interests:** Machine Learning, Statistics, Computational algorithms, Anomalous Pattern Detection  
**Course(s):** Probability and Statistics  
**Recent position/institution:** Ph.D. candidate, Carnegie Mellon

University  
**Education:** Ph.D. (expected December 2015), M.A., Carnegie Mellon University; M.E., Indian Institute of Science

**Why Notre Dame:** *I want to contribute the growth of business analytics at Mendoza. Further, the environment was very supportive and was conducive for interdisciplinary research.*

**Qiping Xu**



Assistant professor, finance  
**Interests:** Corporate finance, capital markets and financial intermediaries  
**Course(s):** Advanced Corporate Finance  
**Recent position/institution:** Ph.D.

student, University of Chicago  
**Education:** Ph.D., MBA, University of Chicago; M.A., Ohio State University; B.A., Zhejiang University

**Why Notre Dame:** *Very collegial environment and great support for research work.*

**Eric Albert Zimmer**



Associate professional specialist, management  
**Interests:** Adoption of innovation; nonprofit organizations; low-power FM radio; Catholic higher education  
**Course(s):** Management Communication,

Negotiation  
**Recent position/institution:** Attache, Holy See Mission to the United Nations (New York)  
**Education:** MBA, University of Chicago Booth School; Ph.D., University of Pennsylvania; STL, M.Div., Jesuit School of Theology at Berkeley; M.A., University of Minnesota; B.A., Loyola University, New Orleans

**Why Notre Dame:** *The opportunity to teach at the nation's preeminent Catholic university presented an attractive and welcome next step for me as an academic and a priest. I am excited to be back home in the Midwest with its welcoming community and hospitable people, to be able to teach extraordinary students, and to help build up the institution.*

**SCHOOL OF ARCHITECTURE**

**Marianne Cusato**



Associate professional specialist, architecture  
**Interests:** The home building industry, real estate trends, urban design, Classical architectural details  
**Course(s):** The Home of the Future: Modern

Housing Solutions for a Changing Society  
**Recent position/institution:** Adjunct professor, University of Notre Dame

**Education:** B.Arch., University of Notre Dame  
**Why Notre Dame:** *I chose Notre Dame because I believe in the University's mission to be a force for good in the world.*

**Jose Cornelio Da Silva**



Associate professor, architecture  
**Interests:** Classic architecture, garden design, interior design, painting, history of art (Classical periods and revivals), Italian art, book collector

**Course(s):** Studio  
**Recent position/institution:** Academic Director of the University of Notre Dame, School of Architecture, Rome Studies Program, Rome

**Education:** M. Arch., U. of Lisbon, Lisboa  
**Why Notre Dame:** *Because The University of Notre Dame has always stood up and defended its roots as a Roman Catholic school. Because it has been defending the cultural backgrounds of Western Civilization, Greece, Rome and the Christian Civilisation on its wide range of universal terms. Because in Notre Dame University you are encourage to be part of the Beauty of Tradition, keeping what makes the individual universal.*

**John Mellor**



Associate professional specialist, architecture  
**Interests:** Classical architecture and urban design; traditional construction materials, methods, and techniques; durability in construction as it pertains to

sustainability  
**Course(s):** Building Technology I, Design V, Graphics II, Design VI  
**Recent position/institution:** Visiting assistant professor, School of Architecture, University of Notre Dame

**Education:** M.Arch., B.Arch., University of Notre Dame  
**Why Notre Dame:** *The School of Architecture at the University of Notre Dame has become the authority on classical and traditional architecture, design, and urbanism within the academic and professional community of architecture. I am pleased to join a respected group of professors working toward the re-establishment of a classical approach to architecture and the role it plays in the development of more durable, sustainable, and humane communities throughout the United States and around the world.*

**Alessandro Pierattini**



Assistant professor, architecture  
**Interests:** Architectural history; Greek and Roman architecture  
**Course(s):** Design I; Building Technology  
**Recent position/institution:** Visiting

professor of architecture, University of Notre Dame School of Architecture, Rome Studies Program

**Education:** Ph.D. candidate, Università La Sapienza di Roma; M.Sc., M.Arch., B.Arch., Università Roma Tre

**Why Notre Dame:** *I chose the School of Architecture of Notre Dame because, instead of chasing passing trends, it values tradition as the foundation of cultural identity, to which design should constantly refer. One more strong point of the School is that it encourages one's personal research in a specific field of expertise while still involving everybody in the School's core task, teaching design. In fact, research on the historical, aesthetic, and technical aspects of architecture converge and contribute to enhancing the quality of teaching.*

**HESBURGH LIBRARIES**

**William Baer**



Associate librarian, research services for engineering  
**Interests:** The innovative use of information literacy in STEM areas including online and hybrid classroom models  
**Recent position/institution:** Mechanical engineering and distance services librarian, Georgia Institute of Technology

**Education:** MLIS, B.S., Brigham Young University

**Why Notre Dame:** *Notre Dame has a reputation of excellence, and I am excited to be a part of this great institution. However, the biggest draw for me is the feeling on campus. The atmosphere of a campus centered on Christian values is very desirable to me.*

**Rachel Bohlmann**



Assistant librarian, American history  
**Interests:** U.S. women's history; history of temperance and prohibition  
**Recent position/institution:** Director of Continuing Education

and interim director of the William M. Scholl Center for American History and Culture at the Newberry Library, Chicago

**Education:** Ph.D., University of Iowa; MTS, Harvard University; M.S., University of Illinois Urbana-Champaign; B.A., Valparaiso University

**Why Notre Dame:** *I'm delighted to be part of the library faculty of a top teaching and research university. I look forward to working with students and faculty at the Hesburgh Library and to developing the collection in American history and American Studies.*

**Randal Harrison**



Assistant librarian, emerging technologies  
**Interests:** The deeply co-constitutive relation of culture and technology, especially with regard to those phenomena described variously by multiple disciplines as

network- or cyber-culture, the information society, or new media

**Course(s):** I will be teaching library information literacy sessions and various technology-related workshops in the fall.

**Recent position/institution:** Web developer (while a Ph.D. student in communication) for the Van Pelt and Opie Library at Michigan Technological University

**Education:** Ph.D., Michigan Technological University; M.A., B.A., San Diego State University

**Why Notre Dame:** *I was impressed upon my interview visit with how welcoming and friendly everyone was. A deep sense of respect shone through for the purpose and value of a liberal education, as well as the values of community and family. The Hesburgh Library is a nationally recognized library, of course, but as a cultural theorist of technology in the Birmingham tradition, the library position allows me to work at the intersection of these two forces to help libraries maintain their techno-cultural relevance in the 21st century.*

**Daniel Johnson**



Assistant librarian of English and digital humanities, Hesburgh Libraries  
**Interests:** English literature, especially of the long 18th century; digital humanities  
**Recent position/institution:** Graduate student, Princeton University

**Education:** Ph.D., Princeton University (fall 2015); M.A., Wake Forest University

**Why Notre Dame:** *Notre Dame strikes the right balance. The University is developing exciting resources for teaching and research, such as the Navari Family Center for Digital Scholarship (to name just one example close to home). Yet, for all the innovation, Notre Dame remains rooted in its strongest traditions, especially the exploration of that evergreen question, "what does it mean to be human?" As we push the boundaries of scholarship in a digital age, we remember that the book itself is a wonderful technology and that the person who picks it up or downloads it remains our central responsibility.*

**Matthew Sisk**



Assistant librarian, Hesburgh Libraries  
**Interests:** Archaeology, human settlement, ecological modelling, GIS, satellite imagery analysis  
**Course(s):** Geographic Information Systems  
**Recent position/institution:** Postdoctoral research fellow, University of Notre Dame

**Education:** Ph.D., M.A., Stony Brook University; B.A., B.S., University of South Carolina

**Why Notre Dame:** *I came to Notre Dame for the opportunity to be involved in scholarship and teaching in a 21st century research library.*

**INSTITUTES AND CENTERS**

**Andrea Christensen**



Assistant professional specialist, Institute for Educational Initiatives  
**Interests:** Learning and motivation  
**Course(s):** Senior Research Seminar; Educational Psychology; Using Research to Help

Children Learn  
**Recent position/institution:** Postdoctoral research associate, Department of Psychology, University of Notre Dame

**Education:** Ph.D., M.A., B.A., University of Notre Dame

**Why Notre Dame:** *There are several reasons I chose to come to Notre Dame. I grew up a part of the Notre Dame family. My father attended Notre Dame and my mother attended St. Mary's in the 60s. In addition, there is an unequalled sense of tradition and community on this campus. Most of all, I came here because of the students. The students here are thoughtful, motivated, and committed to learning in a way I have not seen elsewhere.*

**Kole Knueppel**



Assistant professional specialist, Institute for Educational Initiatives  
**Interests:** Urban school turnaround models; leadership development, school leadership  
**Recent position/institution:** Co-Founder,

Schools That Can Milwaukee

**Education:** Ph.D., M.S., University of Wisconsin-Madison; B.A., Wisconsin Lutheran College

**Why Notre Dame:** *I have a passion for revitalizing parish schools in the urban setting, particularly through investment in the school leader and individual leadership development.*



**Kathryn Lichon**

Assistant professional specialist, Institute for Educational Initiatives  
**Interests:** First and second language acquisition; Catholic schools and the service of linguistically diverse children; science language development through writing interventions; English language learners; maternal interactions and effects on Latino children's school readiness; culturally responsive pedagogy; and teacher formation

**Course(s):** Supporting English Language Learners, Application of Instructional Methods

**Recent position/institution:** Faculty of Supervision and Instruction, ACE M.Ed., University of Notre Dame

**Education:** Ph.D., Southern Methodist University; M.Ed., University of Notre Dame; BBA, Baylor University

**Why Notre Dame:** *Notre Dame's commitment to forming the whole student, commitment to Catholic education at all levels, and its commitment to modeling instruction after Christ the Teacher are tremendous draws. I am delighted to continue exploring ways of better serving immigrant children in such a supportive and encouraging environment.*

**Rev. Nathan Wills, C.S.C.**

Assistant professional specialist, Institute for Educational Initiatives  
**Interests:** Blended learning, technology policy in K-12 schools, Catholic schools and technology innovations, leadership practices

**Recent position/institution:** Summer faculty, Remick Leadership Program at the University of Notre Dame

**Education:** Ph.D., University of Wisconsin-Madison; M.Div., M.Ed., B.A., University of Notre Dame

**Why Notre Dame:** *Notre Dame stands at the forefront of innovation in Catholic education. I believe that innovative models of governance, finance, teaching, learning and technology need to be explored in order to help Catholic schools survive and thrive. I am passionate about Catholic education and committed in my research and scholarship to discovering further ways in which technology and other levers for change can help teachers and leaders in Catholic schools be even more effective.*

**Melodie Wytenbach**

Assistant clinical professor, educational leadership  
**Interests:** Executive management and educational leadership practices with a focus in board and school governance, school finance, mission

advancement, human resources, and project, team and organizational management; the Latino student experience, persistence, navigation, and success in k-16 environments

**Course(s):** Executive Management; Internship and Practice- Mary Ann Remick Leadership Program

**Recent position/institution:** President, Nativity Jesuit Academy, Milwaukee

**Education:** Ph.D., University of Wisconsin-Madison; M.Ed., Mount Mary College; B.S., St. Louis University

**Why Notre Dame:** *The Alliance for Catholic Education in partnership with the University of Notre Dame are transforming Catholic K-12 education across our country. No other institution is having an impact on faith-based education in our country at the scale and with the same passion than here at Notre Dame. To be part of this movement to renew and re-invigorate Catholic education is a humbling honor.*

**FIRST YEAR OF STUDIES****Laura Flynn**

Associate professional specialist

**Interests:** Developing a First Year Rating (FYR) with the goal of predicting academically unprepared students in the summer prior to enrollment and recommending a course

of action before classes begin in August to improve chances of student academic success.

**Course(s):** Moreau First Year Experience

**Recent position/institution:** Associate director in the Career Center, University of Notre Dame

**Education:** MBA, Indiana University, South Bend; B.S., Saint Mary's College

**Why Notre Dame:** *The Catholic academic environment which attracts students, faculty and staff with diverse stories and experiences combined with the resources provided for them to grow and learn create an attractive environment of which I am excited to be a part of. The sense of family, the Catholic identity, the values Notre Dame instills in the students, and the beautiful campus all contribute heavily in my decision to be at Notre Dame.*

**Erin Moira Lemrow**

Assistant professional specialist

**Interests:** Créolization theory, critical multiculturalism, language education, bi- and multilingual education, critical pedagogy, socio-cultural and critical literacy

studies, cultural studies, whiteness studies, anthropology, ethnography, practitioner inquiry, qualitative research methodology

**Course(s):** Moreau First Year Experience

**Recent position/institution:** Burke, Hofman, Kolman Postdoctoral Teaching Scholar at the University of Notre Dame, College of First Year of Studies

**Education:** Ph.D., M.S., B.A., University of Michigan

**Why Notre Dame:** *As the leading institution for Catholic education in the Liberal Arts tradition, I know no other place where I would like to flourish both as a scholar and as a person than at the University of Notre Dame.*

**Kasey Swanke**

Assistant professional specialist

**Interests:** Minority student belonging

**Course(s):** WR 13300

**Education:** M.A., University of Notre Dame; B.S., University of Wisconsin-Eau Claire

**Why Notre Dame:** *Notre Dame offers opportunities to pursue projects of great purpose. The Notre Dame community is collegial and supportive, and students and colleagues challenge each other to make the most of our gifts and talents. This supportive environment is conducive to my own professional development, and I appreciate that all learning - between students, faculty and staff, and community members - truly does become service to justice.*

**OFFICE OF RESEARCH****Aaron Timperman**

Professional specialist, Advanced Diagnostics and Therapeutics

**Interests:** Rapid detection of pathogenic bacteria and viruses, water purification/desalination, determination of mechanisms of coral

bleaching using microfluidics, nanofluidics, and proteomics

**Recent position/institution:** US Army Corps of Engineers, Construction Engineering Research Laboratory, Champaign, Illinois

**Education:** Ph.D., University of Illinois; B.S., St. Louis University

**Why Notre Dame:** *There are many opportunities to serve others, excellent faculty with whom to collaborate, a growing research program, and a positive environment.*

**KEOUGH SCHOOL OF GLOBAL AFFAIRS****Sara Sievers**

Associate professional specialist, Keough School of Global Affairs

**Interests:** Applied International Development

**Course(s):** Introduction to International Development

**Recent position/institution:** Senior Director, Columbia University's Earth Institute

**Education:** MBA, Massachusetts Institute of Technology; B.A., Harvard University

**Why Notre Dame:** *The opportunity to help to build the Keough School of Global Affairs, with its emphasis on international development, is thrilling. This, in combination with the ethos of the social gospel that permeates the campus, makes Notre Dame a wonderful place for those of us who work on global poverty.*

**Ilaria Schnyder von Wartensee**

Research assistant professor, Kellogg Institute

**Interests:** Human development, education, qualitative research methods

**Recent position/institution:** Postdoctoral research associate,

University of Notre Dame

**Education:** Ph.D., Bocconi University, (Italy); M.Sc., London School of Economics and Political Science; M.A., International Affairs Istituto per gli Studi di Politica Internazionale (Italy); M.A./B.A., The Graduate Institute of International and Development Studies, (Switzerland)

**Why Notre Dame:** *Given its strong Catholic identity, the University of Notre Dame provides a forum for vibrant discourse, ethically grounded and practically oriented. I have found that the university and, in particular, the Kellogg Institute for International Studies, facilitates a unique work environment where faculty, staff and students work collaboratively with a spirit of respect and reciprocal esteem. The new Keough School of Global Affairs can play a pioneering role in articulating a person-centered approach and holistic view of human development. I am heartened and enthused to contribute to this worthwhile effort.*

**CENTER FOR SOCIAL CONCERNS****Danielle Wood**

Assistant professional specialist

**Interests:** I am interested in the processes that facilitate collective impact using community indicators, measurement in collective impact, approaches to asset-based

community development, sustainability, and resilience.

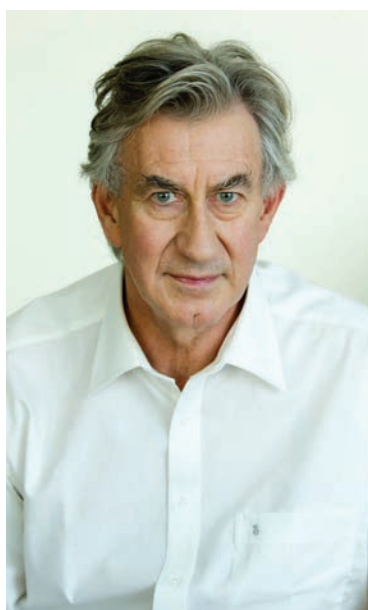
**Course(s):** Intro to Community-Based Research and Community-Based Engineering Design Projects

**Recent position/institution:** My most recent institution was UW-Madison for my doctoral work.

**Education:** Ph.D., M.S., University of Wisconsin-Madison; B.S., Purdue University

**Why Notre Dame:** *The Center for Social Concerns brings to life values that I hold dear. I chose Notre Dame because for the opportunity to contribute toward the work of the center. Also, I am originally from the region, and it was also an opportunity to be near family.*

# Barry McGovern reads Joyce and Beckett



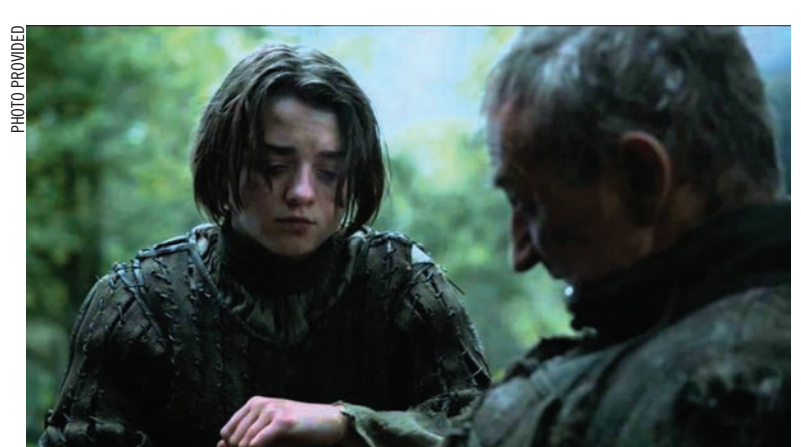
McGovern

Award-winning actor and Naughton Distinguished Visiting Faculty Fellow (Fall 2015) **Barry McGovern** reads selections from the prose, poetry and plays of Samuel Beckett, as well as an edited reading of the Cyclops episode from James Joyce's *Ulysses*. McGovern, the Keough-Naughton Institute's first actor in residence, has lectured and taught master classes worldwide. While at Notre Dame, he is teaching undergraduates in "Joyce & Beckett & the Irish Voice." The course will help build an appreciation for the various voices that permeate the works of these two European modernists. A particular point of focus will be the Irish sensibility

that suffuses the works of Joyce and Beckett — particularly their sense of irony and black humor.

Recently, McGovern appeared in the seventh episode ("Mockingbird") of the fourth season of *Game of Thrones*. He plays an unnamed dying farmer, mortally wounded when Rorge and Biter ransack his village. He is later found by Arya Stark and Sandor Clegane. When he notes that dying is thirsty work, Sandor gives him one last drink of water (both of them wishing it were wine) before stabbing him in the heart, ending his suffering.

Dying man: "Maybe nothing is worse than this."



Arya: "Nothing isn't better or worse than anything. Nothing is just nothing."

Tuesday, Oct. 6, 4 to 5:30 p.m.

Decio Mainstage Theatre  
 DeBartolo Performing Arts Center  
 Free, but ticketed.

Tickets: 631-2800, [performingarts.nd.edu](http://performingarts.nd.edu)



## SUSTAINABILITY

## Climate change and impact investing

## Transitioning to a low-carbon world

BY CAROL ELLIOTT, MCOB

Climate change presents daunting challenges along myriad fronts – environmental effects, government policies, human services – and business investment. In just the next two decades, an estimated investment of \$53 trillion will be required to limit the rise in global temperature to under 2 degrees C, according to the International Energy Agency. Even at that level, the agency puts the odds at just 50 percent.

Given the size and complexity of the challenges, and the disastrous consequences of failure, it's clear that new models of capital allocation and investment vehicles will not only be needed, but vital to providing new opportunities for innovation on a global scale.

The Notre Dame Climate Investing Conference, led by the Mendoza College of Business, will bring together researchers, business leaders, investors and environmentalists to explore the changing role and potential impact of investing in regard to climate change. The conference, "Climate Investing: Transition to a Low-Carbon World," will take place

Tuesday and Wednesday, Sept. 29 and 30, in McKenna Hall.

"This conference is occurring at a most opportune moment," said **Leo Burke**, the director of the Global Commons Initiative at Mendoza College of Business, who is leading the conference. "In June, the Vatican published Pope Francis' encyclical *Laudato Si'*, which speaks to the moral issues involved.

In December, the nations of the world will gather in Paris to address the issue of binding agreements on carbon emissions. We're at the very beginning of a major shift in the global energy system. This has significant implications for every sector of society — including business."

The event is open to the public. Register through the conference website at [climateinvesting.nd.edu](http://climateinvesting.nd.edu).

Through keynote speakers, panels of experts and small group discussions, the conference aims to develop a comprehensive understanding of the relevant issues surrounding climate change, determine actions that both institutional and individual investors can take, and identify new investing opportunities that will positively impact the climate.

Speakers and panelists represent a range of energy, investment, nonprofit and academic organizations, including Mark

Campanale, founder and executive director of the Carbon Tracker Initiative; John Fullerton, founder and president of the Capital Institute; William Hederman, deputy director for Systems Integration and senior advisor to the U.S. Department of Energy Secretary; and Carolyn Woo, president and CEO of Catholic Relief Services.

"The issue of climate change is very complex, and no single point of view is sufficient for generating solutions, so it is important to bring multiple perspectives into the room," said Burke. "As we listen carefully to each other, I have no doubt that a more coherent mutual understanding will emerge. And such an understanding will be very helpful for guiding investment decisions."

"As the world's awareness of the need to adapt to climate change grows, innovative investors are poised to translate the emerging risks of climate change into entrepreneurial opportunities that save lives and improve livelihoods," said **Joyce Coffee**, managing director of Notre Dame's Global Adaptation Index (ND-GAIN), which is part of the Climate Change Adaptation Program of Notre Dame's Environmental Change initiative (ND-ECI). The ND-GAIN Country Index follows a data-driven approach to show which countries are best prepared to deal with global changes brought about by overcrowding, resource constraints and climate disruption.

In addition to ND-GAIN, Climate Investing Conference co-

sponsors include the Center for Social Concerns, the College of Science Minor in Sustainability, QCoefficient, Accenture and NORDAM.

"We cannot escape the fact that climate change is shaping our way of life even now," said **Roger D. Huang**, Martin J. Gillen Dean of the Mendoza College of Business. "But it's critical that we not merely accept a view of the future predicated on annihilation as the likely outcome. Instead, we need to bring our best minds together to envision the opportunities offered through impact investing — benefiting the environment while earning investors equitable returns — which is what this conference accomplishes."

PHOTO PROVIDED



Burke



## Reducing Styrofoam, paper usage in dining halls

## Changes improve sustainability across operations

DANA BAKIRTJY,  
OFFICE OF SUSTAINABILITY

Through a partnership with the Office of Sustainability, Food Services has instituted several changes to improve sustainability across operations. These changes include the removal of Styrofoam containers in dining halls, the elimination of paper bags at grab-and-go locations and an increase in local food purchasing.

By eliminating cups and bags, the University will remove approximately 230,000 8-oz. Styrofoam cups and 196,000 brown paper bags from the waste stream annually. The money saved has been re-allocated toward providing more local food, including milk from Prairie Farms, a local milk cooperative in northeast Indiana that has been in operation for over 75 years.

To make the transition away from paper bags more convenient for students, NDFS and the Office of Sustainability have provided reusable bags that can be purchased at Grab 'n Go locations with cash or flex points. The Office of Sustainability provided a grant to help defray the cost of the bags — the bags are available for approximately half the wholesale purchase price.

The removal of Styrofoam cups is also an important step. While currently considered recyclable under the University's single-stream recycling program, Styrofoam (or more generally "polystyrene") takes up as much as 30 percent of landfill space, and the cups and containers take more than 500 years to break down.

"We're very excited that this program has been a success so far both with the students and from an organizational standpoint," said **Linda Kurtos**, sirector of Sustainability. "We're eager to build on this success by working with Food Services on several additional projects this fall to raise the bar on sustainability even higher."



## October Sustainability events

The coming month brings many opportunities for thoughtful discussion inspired by Pope Francis' encyclical on the Care of Our Common Home. Notre Dame staff and faculty are cordially invited to attend the following free events:

**Integral Ecology: Pope Francis, Ethical Pluralism, and the Planet**  
7 p.m. Monday, Sept. 28, Geddes Auditorium

**Climate Investing Conference: Transition to a Low Carbon World**  
Tuesday and Wednesday, Sept. 29 and 30, McKenna Conference Center (registration at [climateinvesting.nd.edu](http://climateinvesting.nd.edu))

**Reason in a Dark Time: Why the Struggle Against Climate Change Failed — And What It Means For Our Future**  
4 p.m. Thursday, Oct. 1, DeBartolo 102

**Mass for the Care of Our Common Home**  
11:45 a.m. Sunday, Oct. 4, Basilica of the Sacred Heart

**Film Screening: Overburden**  
7 p.m. Tuesday, Oct. 6, DeBartolo 101

**Praise Be USA: Embracing and Acting on *Laudato Si'***  
7 p.m. Wednesday, Oct. 28, Geddes Hall Auditorium

For details about these and other events related to ecological stewardship, please visit [science.nd.edu/sustainability/events](http://science.nd.edu/sustainability/events).



# Facilities Design & Operations: The people behind our beautiful campus

BY CAROL C. BRADLEY, NDWORKS

## Doug Marsh, University Architect We are stewards of the University

Notre Dame's campus is consistently ranked among the most beautiful in America—and the team that's behind the planning, design and construction, maintenance and long-term renewal of the University's physical plant is Facilities Design & Operations, led by **Doug Marsh**, associate vice president and University Architect.

Responsibilities of the division's 125 employees are wide-ranging but can be divided into four major areas: project design and construction; interior architecture; maintenance and utilities. All these areas are committed to work together seamlessly and outside of silos that are often found among these units on other campuses.

While the current construction of new major campus facilities such as McCourtney Hall, Jenkins Hall, Nanovic Hall, two new residence halls, Corbett Family Hall, the Duncan Student Center, and the new Music/Sacred Music Building (Campus Crossroads Project) may be the most visible evidence of their work, "It would be a mistake to focus just on new construction," says Marsh. "We have a balanced mission—we see ourselves as the

chief stewards of this incomparably beautiful and historic campus.

As new buildings are constructed and older facilities renovated, the division also manages daily operations of facilities as well as the delivery of energy and water to service the buildings.

"We think of us as overseeing a 'cradle-to-grave operation,'" says Marsh. "We're responsible for a continuum of services beginning with the planning of the campus and ending with providing consistently reliable utilities and maintenance to all of its facilities. We are better builders and planners because we know that we will care for new buildings after they are constructed. And we are better long-term stewards because Utilities and Maintenance is at table helping to design them. This approach helps us make informed value-based design decisions with respect to long-term operational costs, sustainability and durability."

An emphasis on sustainability is part of the division's stewardship of the University's resources. Nine new buildings are LEED-certified, including Geddes Hall, Ryan Hall, Purcell Pavilion, Innovation Park, Carole Sandner Hall, Stinson-Remick



Marsh

Hall, and the Morris Inn, all of which received LEED Gold Certification from the United States Green Building Council.

In addition, energy conservation measures the division has introduced campus-wide, such as programmable thermostats and LED lighting, have

reduced electrical demand by 20 percent.

When alumni and visitors arrive on campus, they often comment on how beautiful it is, Marsh says. "And they also note how well our campus is cared for. Our goal," he says, "is to do things the right way the first time—

as we say in our mission statement—developing, maintaining and renewing environments that provide for teaching, learning, research, living and working, consistent with our heritage and responsibilities as the world's preeminent Catholic university."

## Paul Kempf, senior director of utilities and maintenance People take utilities for granted, 'and that's the way we want it'

The Utilities Department is dedicated to providing reliable, low-cost and environmentally compliant utility services across campus.

The department is led by **Paul Kempf**, senior director of utilities and maintenance.

Kempf has been at Notre Dame, one way or another, for most of his life. His home address at birth was Verville, the University's married student housing where World War II veterans on the G.I. Bill lived with their wives and families.

Kempf's father worked in the power plant under Brother Borromeo Malley, C.S.C., who supervised both the power plant and the fire department, and later succeeded Brother Borromeo. Kempf was appointed director of utilities in 1998, and senior director in 2011.

Utilities are something most people take for granted, Kempf says, "and that's the way we want it." People notice utilities mainly when something goes wrong.

The University has invested in an efficient and effective way to provide energy on campus and at the same time to be good stewards of the University's resources, Kempf says.

Energy is produced on campus at the power plant, a building that has existed in the same location east of St. Joseph Lake since 1932 (power generation on campus dates to the late 1800s.) "It's a combined heat and power plant, which allows us to provide energy, and use waste energy to produce heat," says Kempf.

The production of steam can be derived from a variety of fuel sources, including coal, #2 and #6 fuel oil and natural gas. Over the past few years, the amount of coal has been reduced to 15 percent of total campus energy usage.

On September 21, President **Rev. John I. Jenkins, C.S.C.** announced that the University will cease burning coal entirely within five years, and cut its carbon footprint by more than half by 2030.

The power plant today houses many pieces of equipment, including six boilers, seven chillers and ten generators. The six boilers produce steam, while generators (five steam-driven turbine generators and five diesel engine-driven generators) produce electricity. Five steam-driven and two motor driven centrifugal chillers produce chilled water.

The department has 50 employees. Nineteen are plant operators, eleven handle maintenance and others provide engineering support. The distribution team maintains pipes and wires, while the controls group manages or monitors systems.

In addition to steam, the power plant produces nearly half of the electricity the University uses. Other ancillary products include compressed air and drinking water. The department also manages both storm and sanitary sewers.

Visit the website, [utilities.nd.edu](http://utilities.nd.edu), for outage information, to request service or to download a brochure with additional information on the power plant as well as the University's energy and environmental stewardship efforts.

The department is also happy to offer tours of the power plant. Email Kempf at [pkempf@nd.edu](mailto:pkempf@nd.edu) or call 631-6594. "It's a chance for our folks to show off what they do," he says.



Kempf



# Julie Boynton, Transforming interior spaces



BARBARA JOHNSTON

“The most common misconception about the interior design team is that we pick colors and buy furniture—people visualize a sea of swatches and paint samples,” says **Julie Boynton**, director of interior architecture.

“In fact, we’re involved in nearly every new construction and renovation project on campus—managing and advising on details that range from wood species and stain, to door and hardware finishes, to selecting towel bars, leading design and implementation in graphics, themeing, and signage...and selecting flooring and paint colors and furniture...really nearly every single thing a person sees and touches inside a building. We oversee and manage the interiors portion of projects from conceptual design through the planning and execution of campus clients moving into their new spaces.”

When Boynton started working at the University in 2003, she was an office of one. Her team has since expanded to include interiors project managers **Tammie Rowley**, **Shay Nothstine**, **Jodie Funkhouser**, **Joline Lock**, and **Mary Cyrier**, as well as a student intern. The Interior Architecture team is set-up similarly to the maintenance department in that interiors project managers are assigned to buildings by type and the similarity of the building function.

While the team is managing interior architecture for the new buildings going up across campus, she notes, “We currently have 94 other projects of various sizes.

When a campus client’s project is only related to furniture, we don’t always get involved. But we’re involved in any project where the physical space is changing — carpet, paint, re-doing a conference room or renovating an entire floor. A lot of what our team does involves space planning to ensure that a campus client’s needs can be fully met by the layout and design of their new space. We want to create not only inspiring spaces, but also fully functional spaces by working closely with our team members in the Planning, Design & Construction department.”

One of her team’s major recent projects was the remodeling of the Morris Inn. “Listening is key,” she says. “The Morris Inn is viewed as ‘the living room of the campus.’ We need to carefully consider the types of spaces that make people feel good and welcome. We wanted the space to be refreshed, open and light. We also considered how we could create a timeless design so that it does not get dated too quickly.”

Boynton’s team also handles their own budget, and their portion of construction and renovation schedules on projects. “We manage our areas of the projects as well as direct the interior design elements,” she notes. “In a job such as ours, you not only use your interior design skills, you also have to plan well and be strategic in decision-making, always considering the larger good of the project.”

Boynton

## Heather Christophersen, Director of Maintenance

### Keeping up service levels as the University grows

**Heather Christophersen**, director of maintenance, oversees the maintenance department, including locksmith services and contract and materials management. The maintenance team is comprised of six zones, which divide areas of responsibility on campus by building type and similarity of equipment — labs and residence halls for example.

Christophersen recently rejoined the University. Previously she worked in the Office of Sustainability, the Office of Strategic Planning, Institutional Research and the Alumni Association, and most recently with a green chemical start-up company. She’s a Notre Dame graduate in chemical engineering with an MBA from the Kellogg School of Management at Northwestern University.

The zone system, she notes, was created when the division was reorganized three years ago. Under the system, maintenance teams are assigned to a specific area of campus in order to more effectively provide customer service. The technicians are able to focus efforts on their assigned buildings, understand the specific equipment and build relationships with building occupants.

Technicians carry mini iPads to call up work orders or building plans. Having the information at their fingertips allows for faster response times and has reduced the inventory of spare parts on hand—for example, filters for air handlers are now delivered by the manufacturer on an as-needed basis.

Teams of technicians do corrective maintenance — changing light bulbs,

clearing plugged sinks — as well as preventive maintenance to prevent equipment from going down. In addition, contracts and materials manager **Deb Murray** handles purchasing of needed items such as filters, belts or plumbing supplies as well as the management of the contract shops on campus.

“My role is to lead the team and ensure we provide excellent levels of service to campus,” says Christophersen, “But as we grow campus by almost 15 percent in the next few years, my job will also be to help answer the question of how we provide the same high level of service to buildings and campus customers, while also managing the University’s resources in terms of workload and efficiencies across the zones.”

#### Bill Brovold and John Kuczanski: Maintenance zone supervisors have special roles

**Bill Brovold** is maintenance supervisor for all the University’s science and research buildings. His first job on campus was as a union sheet metal worker for a contractor. He joined the University in 1999 and in November will mark 16 years as a campus employee.

“I work with a four-man maintenance technician team that keeps all of the buildings systems in our zone up and running correctly,” Brovold says. “We try to have a very fast response times for all the issues that arise within our zone, because the research the faculty do is so

important. We all take great pride in our customer service.”

Brovold and his team handle maintenance for approximately 1.2 million square feet of science and research space, including Nieuwland Science Hall, Stepan Hall of Chemistry and Biochemistry, Jordan Hall of Science, Galvin Life Science and others, as well as Innovation Park and the Indiana School of Medicine-South Bend. When McCourtney Hall is completed, it will add another 200,000 square feet to their zone.

In addition to maintenance, Brovold’s position is unique in that he also oversees lab renovations within the College of Science, including design and construction within his zone. “I’ve had the honor of overseeing more than 50 lab renovations in the past 16 years for new and current faculty researchers.”

All members of the team have a strong commitment to customers. “To us they’re family, and the research they’re doing could someday save my life.”

**John Kuczanski**, is a maintenance supervisor for Notre Dame’s 29 residence halls — a number that will increase to 31 when two new undergraduate residence halls, one for men and one for women, open east of Grace Hall, Pasquerilla Hall East and Knott Hall.

A South Bend native, Kuczanski was hired as the result of a series of

coincidences. He was working for a contractor on campus, and applied for the position. “It was the last day they were taking applications. There were 58 applicants, and I was one of four that were interviewed. The first person they offered the job to turned it down.” In September, he celebrated his 25th anniversary as an employee.

Kuczanski’s team consists of six maintenance technicians, each of whom is responsible for five buildings. “It’s a challenge just to ensure that we have an appropriate response time to the large number of work requests we receive daily, especially at the beginning of the year,” Kuczanski says. “It’s not uncommon to have over 100 work requests per day.”

Work requests may require help from one of a number of the department’s specialized shops—plumbers, electricians, carpenters, painters or sheet metal. He also deals with outside contractors who may be needed for flooring, repairing ceramic tile in showers or elevator repairs.

Most work requests involve corrective maintenance—fixing

things. “That could be a broken window, a light that went out, a shower with no warm water or a hole in a wall,” Kuczanski says. “The most important aspect of our job is that we realize that the residence halls are the rectors’, priests’ and students’ homes. We respect that by responding quickly and to the best of our ability.”

His team also handles scheduled preventive maintenance such as cleaning roofs and roof drains in fall, or changing belts and filters for equipment such as air handlers.

In addition to his campus job, Kuczanski has an interesting sideline—he’s in his 10th year of working as an IHSAA (Indiana High School Athletic Association) basketball official.

PHOTOS: CAROL C. BRADLEY



Christophersen



Brovold



Kuczanski



# 2015 TEAM IRISH AWARDS

## Echo Program

## Multimedia Team in MarComm



Jan Poorman, Tim Pisacich, Colleen Moore, Jerry Baumbach, Ciara McCance and Katie Muller.

Echo is a highly selective graduate Catholic Church leadership program established in 2004 by Dr. John Cavadini, director of the Institute for Church Life, in direct response to a growing need within the church for a new generation of well-formed, theologically trained lay leaders. Over the last 11 years, Echo participants and graduates have served more than 30 percent of the nation's Catholic dioceses.

Students entering the Echo program are accompanied on his or her two-plus year journey by a team of professionals who offer

the optimum in spiritual, theological, human and communal formation.

From the first contact with a prospective Echo student or Echo partner diocese, through graduation and preparation for job placement, the Echo team displays excellence in education and service and truly exemplifies the University's core values of integrity, accountability, teamwork, leadership in mission and leadership in excellence.



Tony Fuller, Cody Baker, Beth Grisoli, Ryan Blaske, Barbara Johnston, Michael Wiens and Matt Cashore.

The Multimedia team in MarComm is comprised of a team of AP and Emmy® award-winning photographers and video specialists. Multimedia Services regularly travels across the campus and around the world to document the Notre Dame story on the ground or from the air. They work all hours of the day and night to chronicle the heartbeat of campus through masterful videos and

photography. The narratives they discover and share help tell the world the Notre Dame story and record it for future generations. Whether shepherding the "What Would You Fight For?" series, producing the 30-second messages shown on national TV during athletic events, capturing images of the University's greatest achievements or covering its monumental events, the Multimedia team is there to share those moments with the world.

## Saving for college starts now

### 529 Plans offer options for parents

BY GLENDY X. MATTALIA,  
FOR NDWORKS

Imagine this.

It's 2033. You've been a good parent to your child, providing for her every need. Today, you're happily, if a bit tearfully, sending her off to college. As you visit the mall to outfit your new college kid's dorm room, one of two thoughts crosses your mind.

"Thank goodness I have tuition covered with my 529 Plan." Or, "I really wish I'd gotten that 529 Plan to help out with these college expenses."

The key is planning ahead, and there are a number of choices available to families.

The **Saving for College** program is a cross-departmental initiative led by **John Sejdinaj**, vice president for finance. Says Sejdinaj, "We aim to empower families to take action and begin planning and saving for one of their largest investments — their children's education."

### What are my options? 529 Plans

A 529 plan is tax-advantaged and authorized by Section 529 of the Internal Revenue Code. These plans, legally known as "qualified tuition plans," are designed to encourage families to save for future college costs for children, grandchildren,



godchildren, children of friends or even themselves. There are two types of 529 plans: pre-paid tuition plans and college savings plans.

**College savings plans** can be used for all qualified higher education expenses including tuition, fees, room, board, books and mandatory supplies. These savings plans are investment accounts and include options and age-based portfolios that shift to more conservative investments as the beneficiary approaches college age.

**Pre-paid tuition plans** offer families the opportunity to lock in the cost of tuition at the time of purchase for use at a later date. These pre-paid tuition plans can typically only be used for tuition and mandatory fees. Most prepaid tuition plans are sponsored by a state and can only be used by residents

of that state. However, there is one national prepaid tuition plan that can be used by anyone regardless of state residency — the Private College 529 Plan.

The University participates in the **Private College 529 Plan**, a prepaid tuition plan sponsored by more than 275 private colleges across the country including Notre Dame and Saint Mary's College that give participants tomorrow's tuition at today's prices for up to 30 years — and the increase in value is tax- and fee-free.

**Savingforcollege.nd.edu** has information that can help families with post-secondary education planning. In addition, the site includes a list of upcoming events. If you have any questions, please email Mary Scott at [sav4coll@nd.edu](mailto:sav4coll@nd.edu) for details.

## Save or Borrow?

When you save money, you earn interest. When you borrow money, you pay interest.

### Create a college savings plan

- Saving for college will not hurt your family's chances of receiving financial aid.
- It's never too late to begin planning and saving for higher education expenses.
- Private College 529 Plan is a prepaid tuition plan — not an investment account.
  - Your prepaid tuition is guaranteed for up to 30 years
  - No fees
  - No worries about stock market downturn
  - No investments to choose

### Golden Dome Opportunity\*\*

- Private College 529 Plan supports Notre Dame's Saving for College initiative.
- Special bonus if you open account through December 31, 2015
  - Add 10 percent to each new account opened with a minimum of \$2,000.
  - Maximum bonus available — \$2,500.

### Talk with Private College 529 Representatives\*

- Stop by Football Friday at Eck or Notre Dame Experience (Fan Fest) during these weekends:
  - October 16-17 (USC)
  - November 13-14 (Wake Forest)

\*You can register to win one of two Brian Kelly-signed footballs each weekend.

\*\*Participation in the Plan does not guarantee admission to any college or university, nor does it affect the admissions process.

Visit [my.nd.edu/pc529](http://my.nd.edu/pc529) for more information.



# A fuel-saving solution inspired by ancient art



PHOTOS: BARBARA JOHNSTON

## 'Origami' shelters quickly deployed in the field

BY BRENDAN O'SHAUGHNESSY,  
MEDIA RELATIONS

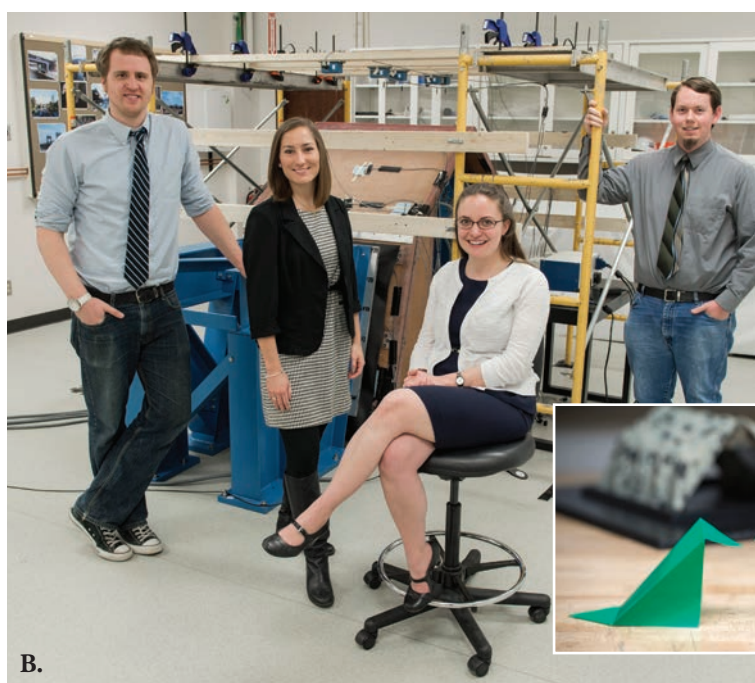
Most people are familiar with origami, the ancient paper-folding art form that creates unique patterns and shapes. Less familiar is the fact that origami has inspired the design of engineering devices and structures.

**Ashley P. Thrall**, Myron and Rosemary Noble Assistant Professor of Structural Engineering, is developing origami-inspired

*A. Ashley Thrall with an origami shelter. B. Members of the Kinetic Structures Laboratory team in front of a half-scale prototype of the structure. From left: Zach Ballard, postdoctoral research associate; Angelene Dascanio, undergraduate research assistant; Ashley P. Thrall, Myron and Rosemary Noble Assistant Professor of Structural Engineering, director of Kinetic*

*Structures Laboratory; Evan Gerbo, Ph.D. student.*

*C. The paper models that inspired the lever system design.*



shelters that have many potential uses from military applications to humanitarian assistance. Thrall directs the University's Kinetic Structures Laboratory, which is devoted to analytically, numerically and experimentally investigating the behavior of a wide variety of moving, modular and deployable structures. It is the only university laboratory in the United States that is dedicated to investigating kinetic structures for civil engineering applications.

Through funding from the U.S. Army Natick Soldier Research, Development and Engineering Center, Thrall, faculty in aerospace and mechanical and also electrical engineering and their team of students and postdoctoral research associates are developing an origami-inspired deployable shelter with integrated planning and management.

"Our goal was to improve the quality of life of soldiers while addressing the need for better energy efficiency in heating and cooling," said Thrall. "The principles of origami allow rigid wall structures to fold, so not only are they more energy-efficient than canvas tents, but they can also be easily transported. In fact, the structure that we built is the first rigid-wall shelter that is air-liftable."

After experimenting with numerous origami paper models, Thrall and her team came up with a unique origami shelter combined

with a novel lever system to easily lift and erect the origami structure. The origami shelter created by Thrall and her team would reduce energy consumption, would be deployable by a few soldiers in about half an hour, and could be transported by plane, ship or truck on a standard military pallet.

The team is collaborating with faculty, students and postdoctoral research associates in mechanical and electrical engineering who are developing optimized control systems for heating and cooling to further reduce energy consumption. The rigid-wall structure, combined with the optimized control system, could potentially save the military millions of dollars per year. It also holds great promise as an environmentally friendly shelter for disaster relief efforts around the world.

In addition to the origami temporary structures, Thrall's lab is developing a framework for transitional bridging through a National Science Foundation Faculty Early Career Development (CAREER) award. Through funding by the Department of Energy, Thrall and collaborators are investigating prefabricated high-strength rebar systems with high-performance concrete for accelerated construction of nuclear concrete structures.

For an animation, video and more in-depth look at the project, visit [nd.edu/features/origami-shelter](http://nd.edu/features/origami-shelter).

## SERVICE ANNIVERSARIES

The University congratulates those employees celebrating significant service anniversaries in **October**:

### 35 Years

**Barbara J. Hellenthal**,  
Biological Sciences

### 30 Years

**Hue Q. Hoang**,  
Building Managers  
**Julie A. Scott**, Morris Inn  
**Christopher L. Vitale**,  
Central Receiving

### 25 Years

**Salem P. Davis**,  
Hesburgh Libraries  
**Larry W. Fries**, Bookstore  
**Colin D. Layman**, Food  
Services, South Dining Hall  
**Jean L. Rinehart**,  
St. Michael's Laundry  
**Sandra A. Sanders**,  
Custodial Services

### 20 Years

**Rebecca J. Albertson**, Reckers  
**Kristie L. Clark**,  
Hesburgh Libraries  
**Rebecca R. DeBoer**,  
University Press  
**Denise A. Hock**, IT  
Administrative Services  
**Laura L. Schultz**, Food  
Services, North Dining Hall  
**Lucille M. Spaulding**,  
Accounts Payable  
**Peggy L. VanKirk**, Food  
Services, Fatima House

### 15 Years

**Jeremy D. Brown**, Development  
**Margaret A. Dawson**, Security  
**Kathleen F. Fischer** and  
**Claire E. Shely**, College of Arts  
and Letters  
**Robert E. Franken**,  
Student Activities  
**Robert A. Guthrie**, Teaching  
and Learning Technologies  
**Patricia Guzowski**, Theology  
**Loren Hagey**, Food Services,  
South Dining Hall  
**William E. Mountford**,  
Infrastructure Services  
**Bruce Stump** and **Timothy S.  
Wilson**, Customer IT Solutions  
**Heng Wang**, IT, Mendoza

### 10 Years

**Julie E. Arnott**, Aedin N.  
**Clements** and **Christine R.  
Reimers**, Hesburgh Libraries  
**Kelli B. Brown**, Review of Politics  
**Mark T. Egierski**, Maintenance  
**Bill J. Gangluff**,  
Alumni Association  
**Sue Halasz** and **Rachel L. Jones**,  
Athletics Facilities and Sports  
Operations  
**Bradley Jones**, Customer  
IT Solutions  
**Stacy L. Koebel**, Development  
**Nicolas Lehner**, Physics  
**Jonathon Myers**, Legends  
**Susan Shields**, Organizational  
Effectiveness  
**Mary G. Warner**,  
Human Resources

## NEW EMPLOYEES

The University welcomes the following employees who began work in **August**:

**Ashley Albertson**, Athletics  
Media Relations  
**Karla Bellinger**, Theology  
**Chiara Bernardini**,  
Research Cores  
**Patrick Borders**, **Richard D.  
Naponelli** and **Taylor  
Rockafellow**, Development  
**Scott M. Boyle**, Institute for  
Church Life  
**Leilani A. Briel**, Archives  
**Calisha Brooks**, **Terri Duck**  
and **Weiyang Xie**,  
University Counseling Center  
**Madeline P. Casanova**,  
Student Development and Welfare  
**Joachim E. Castellano**, Center for  
Study of Language and Culture  
**Megan J. DePrimio** and  
**Janna B. Hughes**,  
Athletics Marketing  
**Kenton Elworth** and  
**Justine A. Morneau**,  
Recreational Sports  
**Marianne T. FitzGerald**,  
Office of VP-Mission Engagement  
**Mario S. Diaz**, **Joshua O.  
Freeman** and **Alicia Yamamoto**,  
Sports Medicine  
**Mason Graddock**, Compton  
Family Ice Arena Administration  
**Tiffany Griffin**,  
Marketing Communications

**Phillip A. Gulis**, **Brian D.  
Hughes**, **Daniel J. Marco** and  
**Julie M. Wilson**, Morris Inn  
**Nichole Herr**, Freimann  
Animal Care Facility  
**Christine Holst**, Law School  
Career Development Office  
**Matthew E. Hovde, C.S.C.**,  
Residence Halls Staff  
**Dennis M. Kline**,  
Joyce Center Housekeeping  
**Andrea Lafnitzegger**, **Jiwon Min**  
and **Brendan Whitney**,  
Psychology  
**Ashley L. Lunford**, Multicultural  
Student Programs and Services  
**Katherine E. Mattie**, Athletics  
Digital Media  
**Linnea Minnema**,  
Office of Research  
**Lillian Nguyen**, Graduate  
Business Career Services, Mendoza  
College of Business  
**Jessica E. Nickrand**, Reilly Center  
**Kari Oliver**, Football  
**Elisabeth A. O'Toole**, Lab for  
Economic Opportunities  
**Spencer J. Pullins**, Joyce  
Center Equipment Room  
**Ryan P. Retartha**, Performing  
Arts Administrative  
**Tracy R. Rodriguez**,  
University Health Services

**Tiffanie Sammons**,  
Center for Zebrafish Research  
**Steven Schneider**, Customer  
IT Solutions  
**Mark J. Seamon**,  
Zahm Society of Merit Scholars  
**Andrew C. Strouse**, Huddle  
**Rachel Thiel**, Kellogg Institute  
**Daniel Williams**,  
Radiation Laboratory  
**Mark H. Willkom**,  
Basilica of the Sacred Heart  
**Mark A. Witte**, Teaching and  
Learning Technologies  
**Julia A. Yoder**, Special Events  
and Protocol, Development



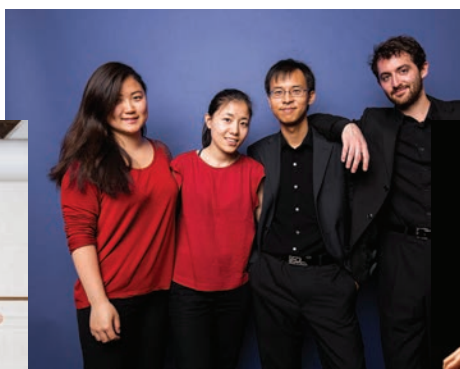
# ND Arts

SEPTEMBER 2015



◀ Third Coast Percussion

Seán Curran Company ▶



◀ Zora String Quartet

EnsembleND ▶



For tickets to events at the DeBartolo Performing Arts Center, visit [performingarts.nd.edu](http://performingarts.nd.edu) and create an account or log in to view faculty/staff discounted ticket prices, or contact the ticket office, 631-2800. Ticket prices listed are the faculty/staff rate.

## MUSIC

### Zora String Quartet

Presenting Series

Friday, Oct. 9; 8 p.m.; \$12

The Zora Quartet was named the Grand Prize and Gold Medal Winner of the 42nd Fiscoff National Chamber Music Competition and the Coleman-Barstow Prize winner at the Coleman National Chamber Music Competition in 2015. Quartet members hold graduate degrees in performance and chamber music from the Jacobs School of Music in Indiana University and were part of the Jacobs School of Music's prestigious Chamber Music Performer's Diploma from 2014–16.

### ensembleND

Presenting Series

Sunday, Oct. 11; 2 p.m.; \$19

Carnival of the Animals is Camille Saint-Saens' beloved suite of 14 colorful pieces representing various members of the animal kingdom. Narrated by Peter Holland, a drama and theatre expert and Notre Dame's associate dean for the arts, the recital also features pictorially oriented music of later French composers Maurice Ravel and Claude Debussy.

### June H. Edwards Chamber I

South Bend Symphony Orchestra

Sunday, Oct. 25, 2:30 p.m.; \$25

Beethoven and Bruch

Celebrated SBSO concertmaster Zofia Glashauser lends her rich, expressive tone to Bruch's romantic masterpiece. Beethoven's 8th is often referred to as the "little" symphony, positioned as it is between giants 7 and 9.

Sibelius Romance in C Major  
Bruch Violin Concerto  
Beethoven Symphony No. 8

### Third Coast Percussion

Presenting Series

Friday, Oct. 30; 7 p.m.; \$16

Ensemble-In-Residence, Third Coast Percussion, stages another groundbreaking concert experience in the stunning tradition of 2014's Wild Sound. This time the Chicago-based quartet performs the world premiere of Nathan Davis' *a Sound uttered, a Silence crossed* with a libretto by Laura Mullen performed by Notre Dame Collegium Musicum. And, it includes water.

## THEATER

### ND Theatre NOW!: Wildflower

Department of Film, Television and Theatre; \$12

Thursday, Oct. 1; 7:30 p.m.

Friday, Oct. 2; 7:30 p.m.

Saturday, Oct. 3; 7:30 p.m.

Sunday, Oct. 4; 2:30 p.m.

Wednesday, Oct. 7; 7:30 p.m.

Thursday, Oct. 8; 7:30 p.m.

Friday, Oct. 9; 7:30 p.m.

Sunday, Oct. 11; 2:30 p.m.

by Lila Rose Kaplan

A student-driven project directed by FTT senior Anthony Murphy. A summer wind spreads the seeds of curiosity and fans the dangerous flames of desire.

### Bram Stoker's Dracula

Presenting Series

Friday, Oct. 16; 8 p.m.; \$30

In Charles Morey's acclaimed adaptation, Count Dracula slips quietly into Victorian London with a cargo of his native Transylvanian soil, necessary for rest between his victims. The city seems helpless against his frightful power, and only one man, the smart and resourceful Dr. Van Helsing, can stop the carnage. Break out your costume for the Halloween after-party.

### Curious George

Presenting Series

Saturday, Oct. 24; 11 a.m.

and 2 p.m.; \$10

Join the lovable Curious George, star of books, movies and the award-winning PBS television show in this page-to-stage musical.

## DANCE

### Sean Curran Company

Presenting Series

Thursday, Oct. 1; 7 p.m.; \$22

Friday, Oct. 2; 7 p.m.

Saturday, Oct. 3; 7:30 p.m.

A synergistic collision of two authentic forms — American modern dance and centuries-old Kyrgyz music, Curran's troupe marks its third Presenting Series world premiere with *Dream'd in a Dream*. A unique dance concert, Ustatshakirt Plus joins the company in a live performance of this evening-length work, inspired by Walt Whitman's "I Dream'd in a Dream" and the poem's peaceful, loving city of friends.

## OPERA AND THEATER AT THE BROWNING CINEMA

### The Met: Live in HD: "IL Trovatore"

Saturday, Oct. 3; 1 p.m.; \$23

187 minutes; Live Broadcast

Soprano Anna Netrebko's dramatic and vocal skills are on full display in her next new role at the Met — Leonora, the Verdi heroine who sacrifices her own life for the love of the gypsy troubadour. Tenor Yonghoon Lee sings the ill-fated Manrico, baritone Dmitri Hvo-

rostovsky is his rival and mezzo-soprano Dolora Zajick is the mysterious gypsy with the troubled past. Marco Armiliato conducts Sir David McVicar's Goya-inspired production.

### National Theatre Live: "Hamlet"

Thursday, Oct. 15; 7 p.m.; \$18

Sunday, Nov. 1; 1 p.m.

Directed by Lyndsey Turner

With Benedict Cumberbatch

Not Rated, 240 minutes; Captured Live Broadcast

Academy Award nominee Benedict Cumberbatch takes on the title role of Shakespeare's great tragedy. As a country arms itself for war, a family tears itself apart. Forced to avenge his father's death but paralyzed by the task ahead, Hamlet rages against the impossibility of his predicament, threatening both his sanity and the security of the state.

### The Met: Live in HD: "Tannhäuser"

Saturday, Oct. 31; noon; \$23

271 minutes, Live Broadcast

James Levine conducts Wagner's early masterpiece in its first return to the Met stage in more than a decade.

Today's leading Wagnerian tenor Johan Botha takes on the daunting title role, opposite soprano Eva-Maria Westbroek as Elisabeth, adding another Wagner heroine to her Met repertoire after her acclaimed Sieglinde in the Ring a few seasons ago. On the heels of his recent triumph in Parsifal, baritone Peter Mattei sings Wolfram and mezzo-soprano Michelle DeYoung is the love goddess Venus.

## CINEMA AT THE BROWNING

### Watchers of the Sky (2014)

Genocide and Film

Thursday, Oct. 1; 7 p.m.

Directed by Edet Belzberg

Not Rated, 121 minutes, DCP

An extraordinary testament to one man's perseverance, the Sundance award-winning film examines the life and legacy of Raphael Lemkin, the Polish-Jewish lawyer and linguist who coined the term "genocide."

*The series Genocide and Film is presented in conjunction with the exhibit "Germany's Confrontation with the Holocaust in a Global Context," on view in the Great Hall of O'Shaughnessy Sept. 28 until Oct. 16.*

### Me and Earl and the Dying Girl (2015)

New at the Browning

Friday, Oct. 2; 6:30 and 9:30 p.m.

Saturday, Oct. 3; 6:30 and 9:30 p.m.

Directed by Alfonso Gomez-Rejon

With Thomas Mann, Olivia Cooke, RJ Cyler, Nick Offerman, Connie Britton, Molly Shannon

Rated PG-13, 104 minutes, DCP

Winner of the Grand Jury Prize and the Audience Award at the 2015 Sun-

dance Film Festival, *Me and Earl and the Dying Girl* is the uniquely funny, moving story of Greg (Mann), a high school senior who is trying to blend in anonymously as a survival strategy for navigating the social minefield that is teenage life. But when Greg's mom (Britton) insists he spend time with Rachel (Cooke) — a girl in his class who has just been diagnosed with cancer — he slowly discovers how worthwhile the true bonds of friendship can be.

### Peter Pan (1924)

Classics at the Browning

Sunday, Oct. 4; 3 p.m.

Directed by Herbert Brenon

With Betty Bronson, Ernest Torrence,

Virginia Browne Faire, Anna May Wong

Not Rated, 102 minutes; Digital

Projection

Ingeniously capturing the mysteries

and adventures of childhood, James M.

Barrie's timeless play became one of

the most popular films of the 1920s.

Betty Bronson stars as Peter Pan, the

boy who never grew up, who charms

Wendy and her brothers to fly with him

to Never Never Land. On this distant

island of dreams and magic, they

struggle to rescue the Lost Boys from

Captain Hook and his band of pirates,

encountering along the way the

delightful fairy Tinkerbell, a man-eat-

ing crocodile and a band of valiant

Indians. Free admission.

### City of Life and Death (2011)

Genocide and Film

Tuesday, Oct. 6; 8 p.m.

Directed by Lu Chuan

With Hideo Nakaizumi, Ye Liu, Yuanyu-

an Gao

Not Rated, 135 minutes, 35mm

Mandarin with English subtitles

The first big-budget Chinese fiction

film to deal with the Rape of Nan-

king, *City of Life and Death* paints an

epic portrait of wartime conflict, filled

with an ensemble of conflicted charac-

ters caught in the crossfire. Director Lu

Chuan based the film on the recorded

witness testimony from real-life sur-

vivors of the massacre, meticulously

recreating the infamous reign of terror

conducted by the occupying Japanese

army in the Chinese capital of Nanking

in 1937.

### Blackboard Jungle (1955)

Cold War Media Culture

Wednesday, Oct. 7; 8 p.m.

Directed by Richard Brooks

With Glenn Ford, Sidney Poitier,

Vic Morrow

Not Rated, 101 minutes, 35mm

Glenn Ford plays an idealistic English

teacher at an inner-city school who

meets resistance from both students

and teachers as he tries to make

a difference in their lives. The film

has become renowned for its use of

Bill Haley's "Rock Around the Clock"

during its opening credit sequence

which ushered in a new era of rock and roll music.

### The Iron Ministry (2015)

New at the Browning

Thursday, Oct. 8; 7 p.m.

Directed by J.P. Sniadecki

Not Rated, 83 minutes, DCP

Filmmaker J.P. Sniadecki is scheduled to appear in person.

Filed over three years on China's

railways, "The Iron Ministry" traces the

vast interiors of a country on the move:

flesh and metal, clangs and squeals,

light and dark, language and gesture.

Scores of rail journeys come together

into one, capturing the thrills and

anxieties of social and technological

transformation immersing audiences

in fleeting relationships and uneasy

encounters between humans and ma-

chines on what will soon be the world's

largest railway network.

### The Princess of France (2014)/ Viola (2011)

New at the Browning

Friday, Oct. 9; 7 p.m.

Not Rated, 70 minutes/65 minutes,

DCP

Spanish and Italian with English sub-

titles/Spanish with English subtitles

Argentinian director Matías Piñeiro

has emerged as one of the most dis-

tinctive voices in contemporary Latin

American cinema. Most recently, he

has directed a series of films inspired

by the comedies of William Shake-

speare. In "The Princess of France," a

theater director returns home to Bue-

nos Aires after his father's death to

prepare a radio production of "Love's

Labour's Lost." Reuniting with his

repertory, he finds himself sorting out

complicated romantic entanglements,

as well as his muddled relations with

the constellation of friends involved

with the project. Viola follows a young

woman who joins a small Shakespeare

theater company for a production of

"Twelfth Night" and becomes

caught up in a seductive roundelay

of romantic dalliances, intrigue and

revelation.

### Dracula (1931)

Classics at the Browning

Sunday, Oct. 11; 3 p.m.

Directed by Tod Browning

With Bela Lugosi, David Manners,

Helen Chandler, Dwight Frye

Not Rated, 75 minutes, DCP

In the original classic which launched

the Hollywood horror genre, Bela Lu-

gosi stars as the titular Transylvanian

who takes residence in a British castle

and unleashes a bloodsucking panic

on the local residents. Drawing on the

cinematographic influence of German

Expression, Tod Browning (Freaks)

creates an eerie and ominous world

thanks to the remarkable cinematog-

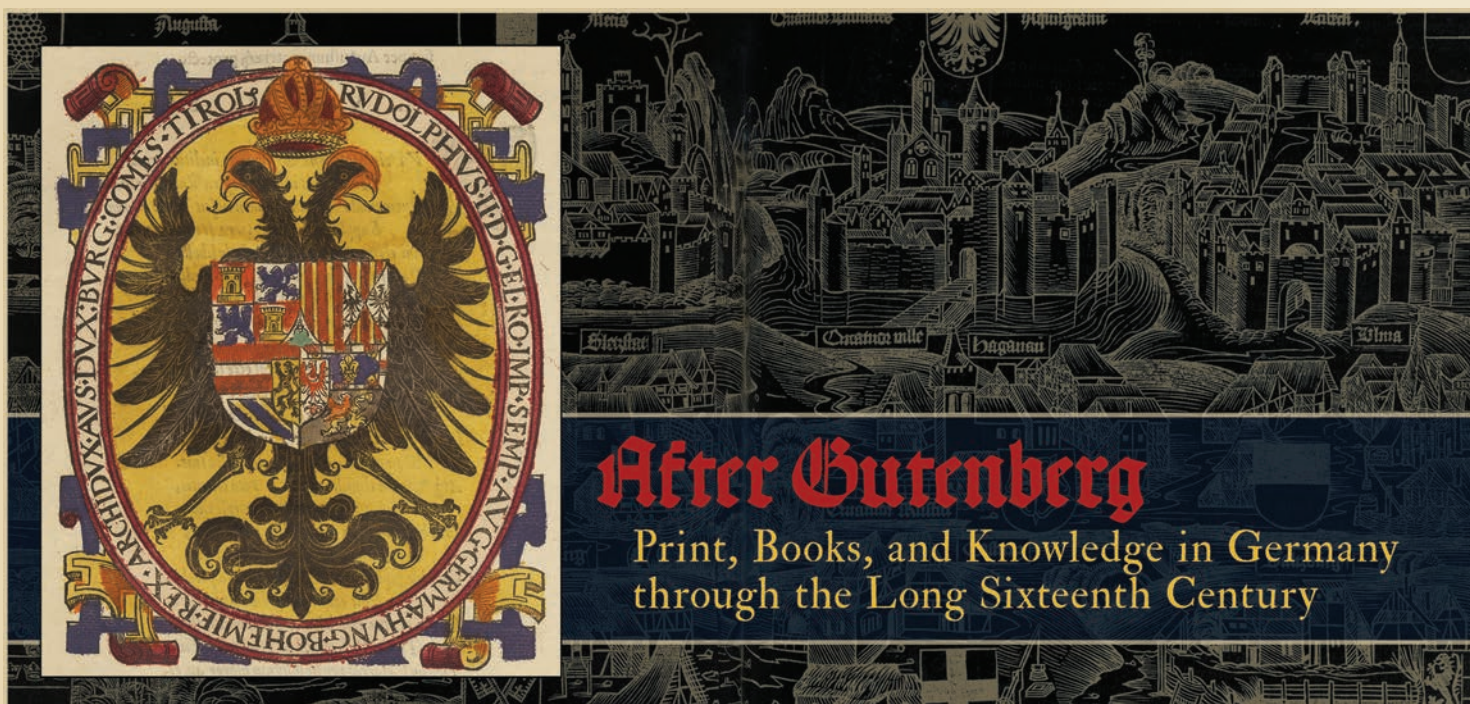
raphy of Karl Freund (Metropolis).

Tickets for Browning Cinema movies are \$6 for faculty/staff, \$5 for those 65 and up, free for Notre Dame students, unless otherwise noted on the website. Visit [performingarts.nd.edu](http://performingarts.nd.edu) for more information or to purchase tickets, or call the Ticket Office at 631-2800.



# Spotlight

## Rare Books & Special Collections



### Special Collections exhibition highlights printing in 16th-century Germany

An exhibition in the Hesburgh Library's Department of Rare Books & Special Collections, **After Gutenberg: Prints, Books, and Knowledge in Germany through the Long Sixteenth Century**, explores innovations in the dissemination of knowledge in Germany during the long sixteenth century (ca. 1450- ca. 1660).

The exhibition, curated by **Julie Tanaka**, rare books curator and Western European history librarian, is on view through Friday, Dec. 18.

The long 16th century in Germany is often overshadowed by neighboring countries—Italy, France and England, and discussed in the context of religious reform and the ideas of theologian Martin Luther, says Tanaka.

But Germany's great strides in the sciences, especially botany and mining technology, she notes, was propelled by another German innovation, the development of moveable metal type and a press to transfer ink to paper by Johannes Gutenberg and two of his contemporaries.

The exhibition contains printed works that range from histories to German translations of the Bible to propaganda and works of fiction.

The Department of Rare Books and Special Collections, 102 Hesburgh Library, is located at the west end of the concourse and is open 9 a.m. to 5 p.m. Monday through Friday, with extended hours through 7 p.m. on Thursday through Friday, Dec. 4.

#### Forbidden Films (2014)

Genocide and Film  
Tuesday, Oct. 13; 8 p.m.  
Directed by Felix Moeller  
Not Rated, DCP, 94 minutes  
German with English subtitles  
Of the 1,200 feature films made in Germany under the Third Reich, approximately 100 were blatant examples of Nazi propaganda. More than 40 of these films remain under lock and key to this day. Director Felix Moeller interviews German film historians, archivists and filmgoers in an investigation of the power, and potential danger, of cinema when used for ideological purposes.

#### The King and I (1956)

Cold War Media Culture  
Wednesday, Oct. 14; 8 p.m.  
Directed by Walter Lang  
With Yul Brynner, Deborah Kerr, Rita Moreno  
Not Rated, 133 minutes, DCP  
When schoolteacher Anna Leonowens (Deborah Kerr) comes to the royal court of Siam in the 1860s, she finds herself

at odds with the stubborn monarch (Yul Brynner). This musical masterpiece features Brynner's Academy Award-winning performance, an unforgettable Rodgers and Hammerstein score, and brilliant choreography by Jerome Robbins.

#### The Battle of Algiers (1966)

Classics at the Browning  
Tuesday, Oct. 27; 8 p.m.  
Directed by Gillo Pontecorvo  
Not Rated, 121 minutes, 35mm  
French and Arabic with English subtitles  
Chronicling the years of insurgency which preceded Algeria's liberation from French rule in 1962, Gillo Pontecorvo's celebrated docudrama has gained even greater prescience in the wake of the War on Terror (it was privately screened for the Bush administration in 2003) for its representation of torture and guerrilla warfare.



Rain, A Hundred Roots Silently Drinking, 2010

### Relax and recharge at the Snite yoga, Tai Chi and meditation

In conjunction with the exhibition **Transitory Waterscapes**, by Danae Mattes, the Snite Museum of Art offers a chance to relax and view art while doing yoga, Tai Chi or guided meditation. Yoga takes place in the gallery at 4 p.m. Thursdays, Oct. 1, Nov. 5 and Dec. 3 (bring your own yoga mat.) Tai Chi takes place at 4 p.m. Tuesday, Nov. 10; guided meditation takes place at 4 p.m. Wednesdays, Oct. 28 and Nov. 18.

On view through Sunday, Dec. 6, the exhibition includes Mattes' landscape paintings and an evaporation pool. The landscapes are the artist's personal "maps" of time spent within nature, "formal equivalents to the experience of moving through the landscape."

Visit [sniteartmuseum.nd.edu](http://sniteartmuseum.nd.edu) for more information and a video of the exhibition.



The new skylight on the north end of the second floor brings much needed natural light and energy to the new North Entrance and reading room.

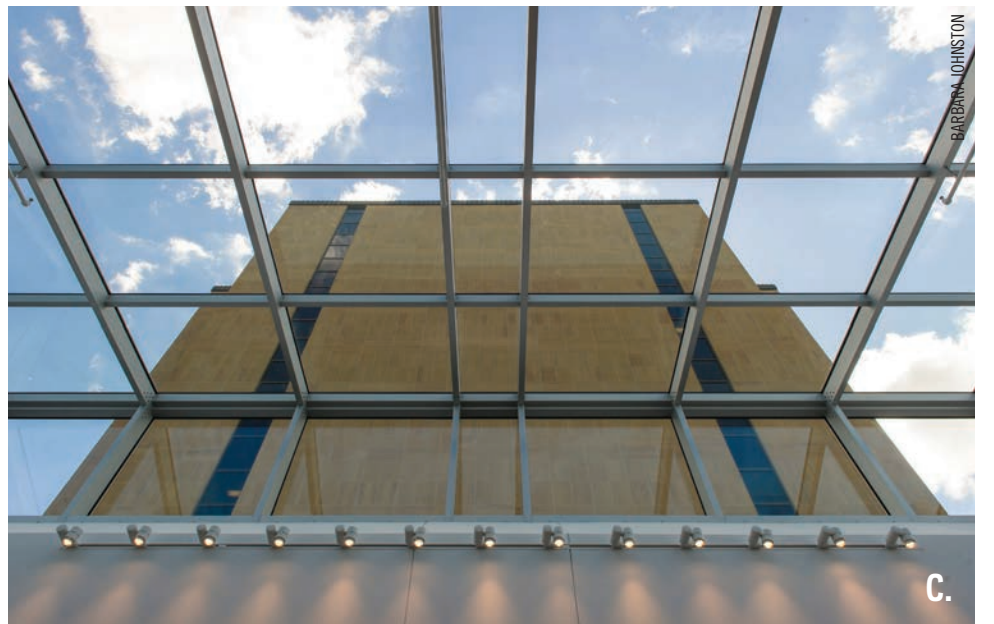
# New North Entrance Transforms HESBURGH LIBRARY

BARBARA JOHNSTON



BARBARA JOHNSTON

A.



BARBARA JOHNSTON

C.

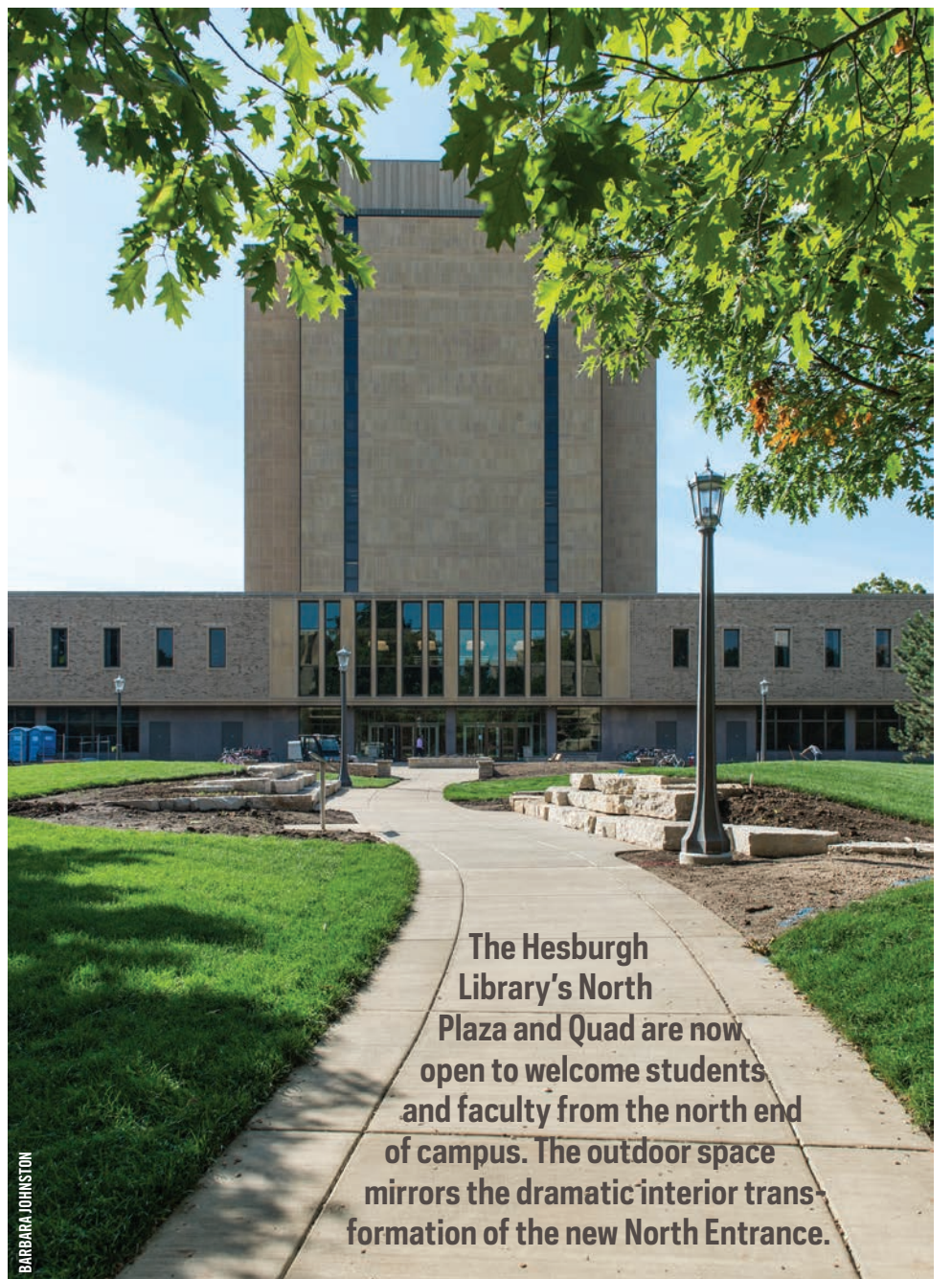


BARBARA JOHNSTON

B.

A & B. The new North Reading Room on the second floor is already a favorite study destination for students seeking both natural light and quiet, individual study space. The room offers dedicated power outlets for students with multiple devices and computing needs.

C. The long-awaited new North Entrance and 2-story atrium are open as Phase 1-A comes to a close.



BARBARA JOHNSTON

The Hesburgh Library's North Plaza and Quad are now open to welcome students and faculty from the north end of campus. The outdoor space mirrors the dramatic interior transformation of the new North Entrance.