

Printing to NDLS printers OS X

View a [video demonstration](#) on configuring your computer to print to Law School printers.

Once you have the printers installed, it is recommended to use the following printers:

ND_Alternative_BW_PCL when printing PDF files.

Default_ND_BW_PS for all other printing needs.

Follow the instructions below to print from your laptop to the Pharos Release Stations located in the Computer and Instruction labs on the 3rd floor of Biolchini Hall (Printers reserved for Law School students only). After the instructions are complete, you will be able to print from your laptop using either a wireless or wired network connection on campus. In order to install printers or send print jobs from off-campus, you must first be connected to the campus network through the VPN. Click the machine type to find information on using the VPN: [Windows](#) or [Mac](#).

*NOTE: Print jobs are purged from the system after they have been printed, or 6 hours after being sent to the Pharos Release Station. When printing to either **Default ND BW PS** or **ND Alternative BW PCL** print queues, you can release the print job from ANY Pharos Release Station on campus.*

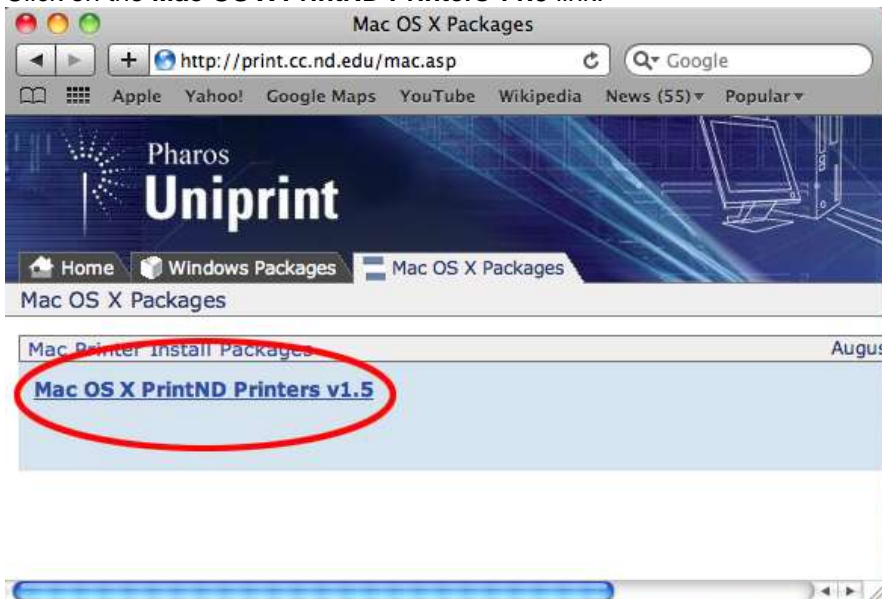
Adding Pharos Printers:

1. Open your favorite Web browser (i.e. Safari, Firefox, Chrome) and type PRINT.CC.ND.EDU into the address line and press enter.

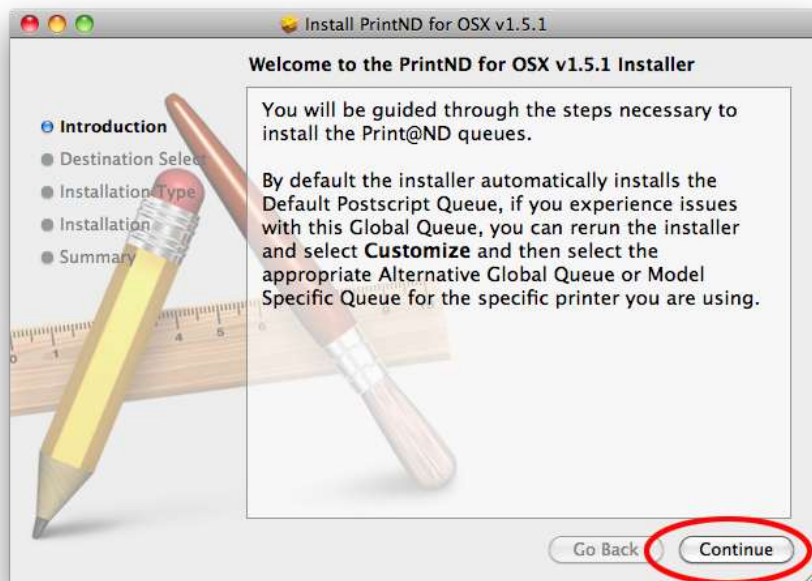


2. Click on the **Mac OS X Packages** link.

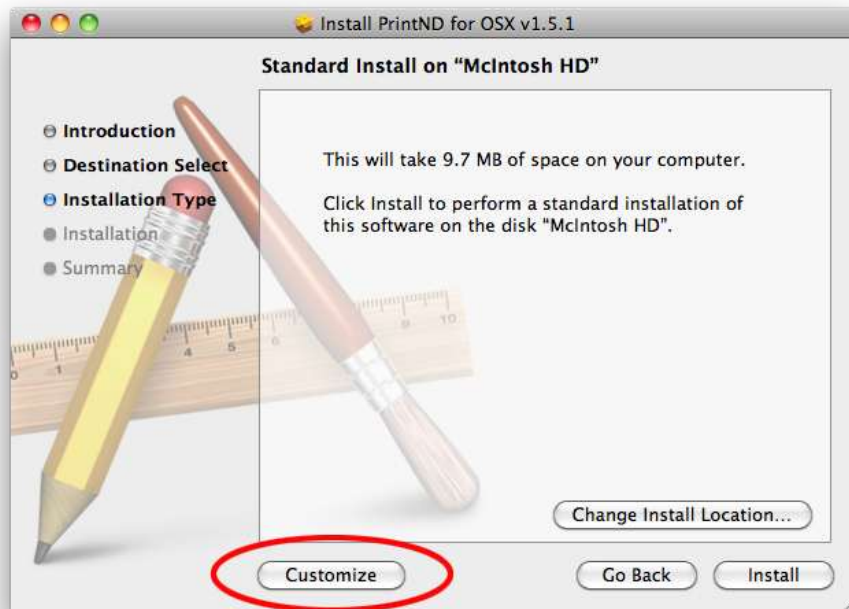
3. Click on the **Mac OS X PrintND Printers v1.5** link.



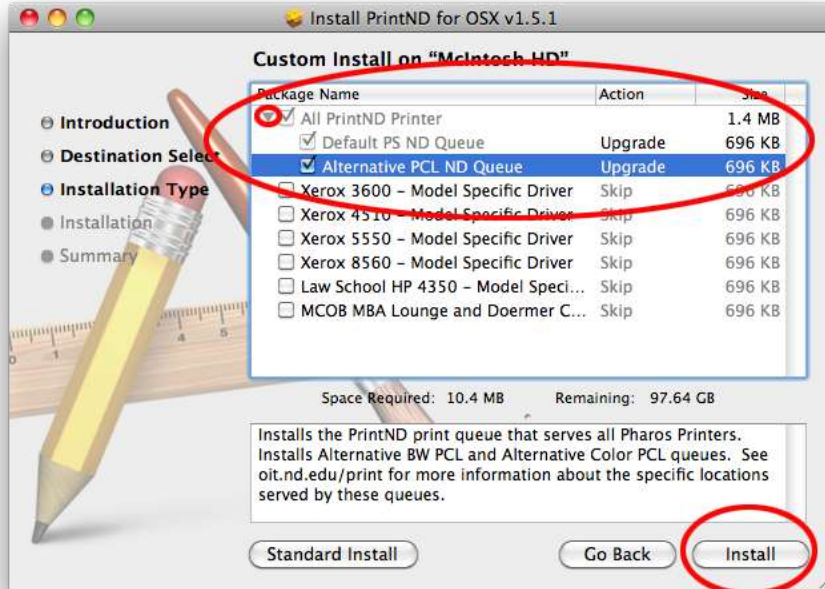
4. The installer will download and launch. Click **Continue**.



5. Click **Customize**.

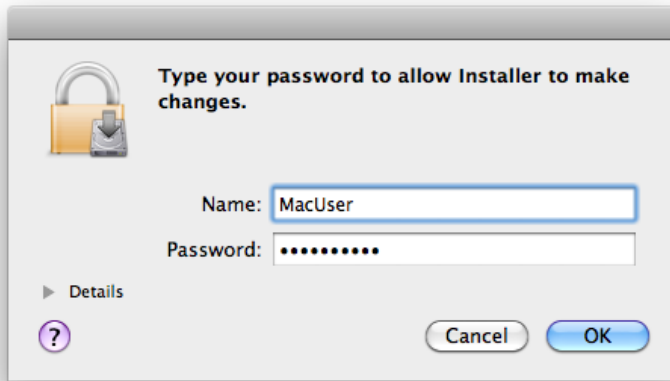


6. Click the arrow next to **All PrintNDPrinter**. Place check marks in both **Default PS ND Queue** and **Alternative PCL ND Queue**. DO NOT click the Law School HP 4350 unless instructed to do so by one of the IT staff.

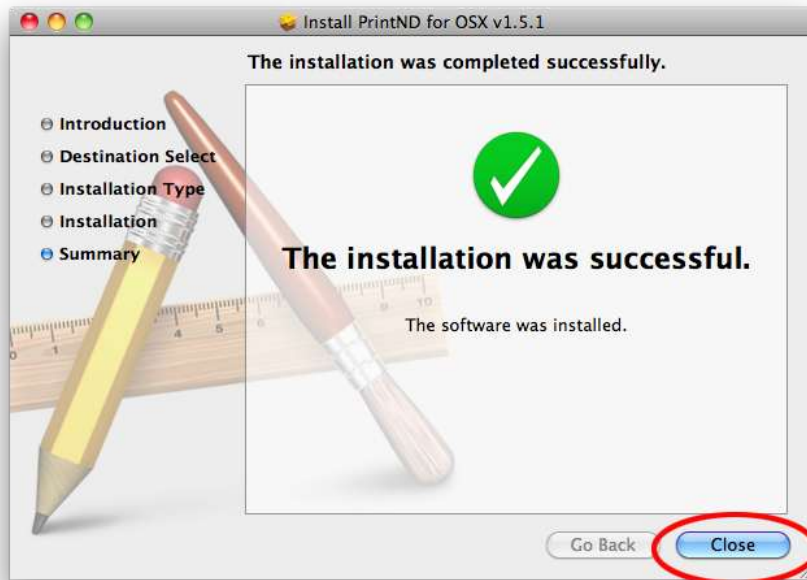


7. Click **Install**.

8. You will be prompted for your Mac username and password. Enter the information and click **OK**.



9. Click **Close** when the installer finishes.



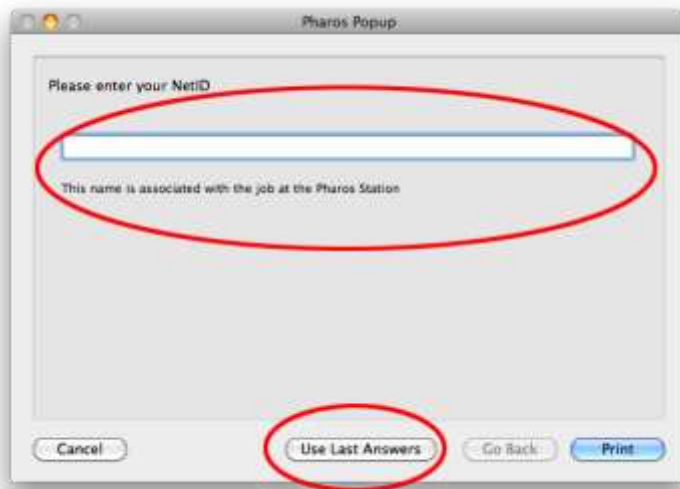
Deleting the Color Printers (optional)

When you open the Print & Fax preference window, you will see four new printers installed: **Default_ND_BW_PS**, **Default_ND_Color_PS**, **ND_Alternative_BW_PCL**, and **ND_Alternative_Color_PCL**. You can use any of these printers on the Notre Dame campus; however, the Law School does not have any color printers. If you do not plan on using the color printers, they can be removed by selecting them and clicking the – button.



Using Pharos Printers:

In the past, Mac users had to change the Account Name used on their Mac to match their netid for printing purposes. This process is no longer needed. Instead, you are now prompted for your netid every time you send a print job to the printer. The first time you send a job to a specific print queue, you will only have the option to type your netid. After the first job has been sent, you are also given the option to **Use Last Answers**.



Note: if your print job does not appear when you log into a release station, you should check your computer to make sure you don't have the pop-up window above still on your screen.

It is also possible that you typed your netid incorrectly. If this is the case, you will simply need to send the print job again and re-type your netid.

We have also seen some cases where print jobs have not shown up at the Release Station when students have been printing PDF files and they chose the **Default_ND_BW_PS** instead of the **Alternative_ND_BW_PCL** printer. If this is the case, you will need to resend the print job with the PCL option.