

## UTILITY OF COMPARATIVE ANCHOR-TAGGED SEQUENCES AS PHYSICAL ANCHORS FOR COMPARATIVE GENOME ANALYSIS AMONG THE CULICIDAE

ERIC W. CHAMBERS, DIANE D. LOVIN, AND DAVID W. SEVERSON

Center for Tropical Disease Research and Training, Department of Biological Sciences, University of Notre Dame, Notre Dame, Indiana

**Abstract.** The development of comparative genetic maps in multiple species of mosquitoes could prove extremely useful in the search for those genes that contribute to mosquito vector competence or genes associated with other phenotypes of interest. To effectively compare these gene maps, markers must be developed that are based on chromosomal regions conserved throughout the Culicidae. We designed 35 polymerase chain reaction (PCR) primer pairs based upon orthologous exons in *Aedes aegypti* and *Drosophila melanogaster* or *Anopheles gambiae*. Twenty-three of the primers yielded a single PCR product in at least one dipteran, in addition to *Ae. aegypti*, when screened with genomic DNA from seven dipterans, including five mosquito species. Eight of the primers amplified a single PCR product in only *Ae. aegypti*, while four primer pairs gave no PCR product in any species. The 23 successful comparative anchor-tagged sequence primer pairs give broad genome coverage in *Ae. aegypti*, and more importantly demonstrate an efficient strategy for developing comparative anchor marker loci for any species of Culicidae.

### INTRODUCTION

The family Culicidae contains approximately 3,500 species of mosquitoes,<sup>1</sup> and historically most genetic research efforts have been directed towards the two principal disease vector organisms, *Aedes aegypti* and *Anopheles gambiae*. The first detailed genetic map for *Ae. aegypti* consisted of 77 morphologic, isozyme, and insecticide resistance markers.<sup>2</sup> Early efforts to produce genetic maps of the *Anopheles* spp. were less successful due to a dearth of morphologic and isozyme markers, along with the difficulty of rearing these mosquitoes in the laboratory. In addition, within both the Culicinae and Anophelinae, these markers were not applicable for detailed genome coverage in a single mapping population and were often non-neutral in nature. Despite the difficulty of working with such markers, genetic linkage maps were constructed for *Ae. togoi*, *Ochlerotatus triseriatus*, *Ae. aegypti*, *An. albimanus*, *An. quadrimaculatus*, and *An. gambiae*.<sup>3,4</sup> Furthermore, a limited comparison of isozyme loci suggested a high degree of synteny.<sup>5</sup> Synteny refers to loci that remain physically linked in different species.

The advent of DNA-based genetic markers including restriction fragment length polymorphisms (RFLPs), random amplified polymorphic DNA (RAPD), single-strand conformation polymorphisms (SSCPs), and microsatellites has allowed the construction of detailed linkage maps for a small number of mosquito species. The first such map, in *Ae. aegypti*, was generated using RFLP markers<sup>6</sup> and consisted of 50 DNA markers based mostly on random cDNAs that identified 53 loci across the three linkage groups. The most recent map for this species consists of 146 markers across 205 cM.<sup>7</sup> Two RAPD-SSCP linkage maps for *Ae. aegypti* were also constructed, the first consisted of 96 loci that covered 168 cM<sup>8</sup>, while the second consisted of 94 SSCP markers based upon single nucleotide polymorphisms (SNPs) that covered 134 cM.<sup>9</sup> Within the anophelines, a DNA-marker-based genetic map of *An. gambiae* was constructed using 148 microsatellite markers covering 215 cM.<sup>10</sup> These genetic maps have proven useful within *Ae. aegypti* and *An. gambiae* in efforts to identify genomic regions or genes associated with mosquito competence to transmit a variety of pathogens.<sup>11–16</sup>

Of interest is the construction of detailed genetic linkage maps in a greater number of mosquito species. Comparative

RFLP-based linkage maps for the mosquitoes *Culex pipiens*,<sup>17</sup> *Ae. albopictus*,<sup>18</sup> *Oc. triseriatus* (formerly *Aedes*),<sup>19</sup> *Cx. tritaeniorhynchus*,<sup>20</sup> and *Armigeres subalbatus*<sup>21</sup> were previously constructed using *Ae. aegypti* cDNA clones as probes to Southern blots. This strategy was successful because many *Ae. aegypti* cDNA sequences are highly conserved across mosquito species.<sup>22</sup> These maps allowed for the direct comparison of these species because the markers are based upon expressed genes (Type I markers) as opposed to microsatellites (Type II markers); that is, although microsatellites have proven useful in developing gene maps in many organisms, they are less useful when making comparisons between organisms because they are usually not conserved between species.<sup>23</sup>

Despite the success in constructing comparative gene maps for several mosquito species using RFLP markers, there has been no attempt to develop polymerase chain reaction (PCR)-based DNA markers that can be used across species within the Culicidae. The utility of orthologous gene comparisons for development as tools for PCR-based identification of conserved syntenies has been demonstrated for both birds and mammals.<sup>23–25</sup> Markers developed in this manner have been referred to as comparative anchor-tagged sequences (CATS) and have been used to generate comparative genome maps in the human, dog, and horse.<sup>26–28</sup> The identification of such a set of markers within mosquitoes could prove to be extremely useful among those species that although not genetically well characterized, nonetheless are of great importance medically.

In this study, we investigated the utility of the CATS marker strategy for developing comparative genome maps among mosquito species. We have evaluated 35 putative CATS primer sets across six mosquito species and two more distant species within the Diptera. Twenty-three of these CATS amplified a single PCR product in at least one dipteran species in addition to *Ae. aegypti*. This simple strategy in which orthologous exons of two or more dipterans are identified, sequence alignments are made, and PCR primers are designed for highly conserved regions should facilitate the rapid identification of PCR-based genetic markers that provide physical anchor loci with broad application to genetically uncharacterized mosquito species and perhaps more distant dipteran species as well.

## MATERIALS AND METHODS

**Candidate selection for CATS.** Identity searches were conducted on 71 previously mapped, partial cDNA clones or known genes from adult *Ae. aegypti* Liverpool females<sup>7</sup> by comparing nucleotide sequences against both the non-redundant as well as the non-human, non-mouse expressed sequence tag (EST) databases using the BLASTN computer program.<sup>29</sup> Thirty-five of the *Ae. aegypti* sequences showed significant nucleotide identities, based upon an expected value (E) of less than  $e^{-15}$  as our critical value for defining sequences as orthologs with sequences from *Drosophila melanogaster* and/or *An. gambiae*. Nucleotide sequences from the putative orthologs were aligned using the Multiple Alignment Program (MAP) on the Baylor College of Medicine (BCM) Search Launcher web site.<sup>30</sup>

**Primer design.** Primers were designed using the PRIMER program (Whitehead Institute, Massachusetts Institute of Technology, Cambridge, MA). We first attempted to design primers within regions of the sequences that exhibited complete nucleotide sequence identity between *Ae. aegypti*, *D. melanogaster*, and *An. gambiae*. In most instances, however, we designed primers to contain no more than 2–3 mismatches with complete sequence identity for the final 5–6 nucleotides at the 3' end. When mismatches were unavoidable, we biased nucleotide selection to the *Ae. aegypti* sequence. We designed primers to be 18–22 nucleotides in length with a G + C content of approximately 50%. When possible, we placed a GC clamp at the 3' end. The expected PCR product size was between 100 and 400 bases. Whenever possible, we avoided selecting primers with the 3' nucleotide representing the third base position in a codon.

**Isolation of DNA.** Isolation of DNA from individuals representing *Ae. aegypti*, *Oc. triseriatus*, *Ae. togoi*, *An. gambiae*, *Ar. subalbatus*, and *D. melanogaster* were performed as previously described.<sup>31</sup> Genomic DNA representing individuals from *Cx. pipiens* was kindly provided by Dr. Akio Mori and that from *Rhagoletis pomonella* was kindly provided by Dr. Jeff Feder (both at the University of Notre Dame, Notre Dame, IN).

**Primer optimization.** The PCRs were conducted in 96-well plates using a Hybaid (Ashford, Middlesex, United Kingdom) Omnigene thermal cycler. Each 25- $\mu$ L PCR mixture contained 1 $\times$  *Taq* buffer (10 mM KCl, 2 mM Tris, pH 9.0, 0.02% Triton X) 1.5 or 3.0 mM MgCl<sub>2</sub>, 0.4 mM each of dATP, dCTP, dGTP, and dTTP, 5–10 pmoles of each primer, 1 unit of *Taq* DNA polymerase, and 5 ng of genomic DNA. Six primer sets were screened with eight dipteran species per plate. We screened each primer set at three anneal temperatures, 50°C, 54°C, and 58°C. The standard PCR conditions were 94°C for five minutes, followed by 30 cycles at 94°C for one minute, an annealing step at one of the three previously mentioned temperatures for one minute, 72°C for two minutes, and a final extension at 72°C for 10 minutes. Primer sets with an expected PCR product size less than 200 basepairs were subjected to an alternate set of PCR conditions: 94°C for 10 minutes, followed by 40 cycles at 94°C for 20 seconds, annealing at one of the three temperatures for 20 seconds, 72°C for 30 seconds, and a final extension at 72°C for 10 minutes. The PCR products were size fractionated by electrophoresis in 3% agarose gels, stained with ethidium bromide, and visualized under UV light.

**Sequencing.** Amplified PCR products were spin-column purified using the QIAquick PCR purification kit (Qiagen, Valencia, CA). The purified PCR products were then quantified visually after electrophoresis on 3.0% agarose gels. The PCR product templates were subjected to cycle sequencing using the ABI Prism Big Dye Terminator kit according to the suppliers recommendations (Applied Biosystems, Inc., Foster City, CA) and an ABI Prism 310 Genetic Analyzer. Single-pass sequence information was obtained from each strand of each PCR product. Sequence data were then subjected to BLASTN and BLASTX searches of the GenBank non-redundant and EST databases using default settings,<sup>29</sup> as well as pairwise sequence alignment to the original *Ae. aegypti* clone sequence using the Blast2 program.<sup>32</sup>

**Linkage map.** The linkage map was drawn using the DrawMap computer program.<sup>33</sup> Map distances are reported in Kosambi centiMorgans.

## RESULTS

From an initial screening of 71 *Ae. aegypti* cDNAs, we designed PCR primers for 35 putative CATS. Of the 36 cDNAs for which no primers were designed, 15 showed insufficient nucleotide identity with *D. melanogaster* or *An. gambiae*, based on our primer design criteria, to allow amplification of a minimum fragment size of at least 100 basepairs, while the remaining 21 *Ae. aegypti* cDNAs showed no nucleotide identity with either *D. melanogaster* or *An. gambiae* when screened against either the non-redundant or non-human non-mouse EST databases using the BLASTN program.

The 35 CATS primer sets were used to screen genomic DNA from six mosquito species including *Ae. aegypti*, *Oc. triseriatus*, *Ae. togoi*, *An. gambiae*, *C. pipiens*, and *Ar. subalbatus*, as well as two more distant species within the dipterans, *D. melanogaster* and *R. pomonella*. Twenty-three primer pairs (Table 1) yielded a single PCR product with at least one species in addition to *Ae. aegypti*, while 8 primer pairs produced a single PCR product only in *Ae. aegypti*. Four of the primer sets failed to produce a PCR product in all of the eight dipterans screened, including *Ae. aegypti*. Two typical CATS primer screening results are seen in Figure 1. The genetic locations in *Ae. aegypti*<sup>7</sup> of all CATS for which we successfully obtained a PCR product in at least one non-*Ae. aegypti* species are shown in Figure 2.

We observed varying rates of success for amplification of individual CATS within each of the eight species tested (Table 2). Amplification of a single PCR product varied among species relative to *Ae. aegypti* with a low of 13% seen in *R. pomonella* and a high of 60% seen in *Oc. triseriatus*. Thirteen of the twenty-three CATS primer pairs (56%) amplified with four or more of the species, while the remaining 10 CATS primer pairs (44%) amplified between two to three different species.

We selected three CATS markers, LF178, LF158, and LF103, for sequence analysis and identity verification. They were selected as random representatives of each of the three *Ae. aegypti* linkage groups. Also, these CATS amplified a single PCR product in at least five of the eight species screened. We sequenced the PCR products from these CATS following amplification of genomic DNA from *Ae. aegypti*, *A. subalbatus*, and/or *D. melanogaster*.

TABLE 1  
Comparative anchor-tagged sequence (CATS) primers and PCR conditions\*

CATS no.	Accession no.	PCR conditions Annealing temperature, °C/mM Mg <sup>+</sup>	Predicted product size (bp)	Primer sequences 5'-forward/reverse-3'
LF90	T58320	50/1.5	110	GAAGAGGTGCAGGTCTCGCT/ACAGATCCGTGACATGGACG
LF92	BM005493	55/1.5	277	CCCAGATCAGCAGCGTTTG/TTACTTCAGCTTCTTCTCGGG
LF96	BM005491	50/1.5	164	ATCAAGCTCGCCAAGGTC/GGGTTGTAGACGGCGTTG
LF99	BM005477	54/1.5	356	AAGCGCAAGCACAAGAAG/TTGATCGACTTGTTCAGCT
LF103	BM005488	54/1.5	181	ATGCGGATCTTCGGATC/AGTGGACGGCAATCTTTTCG
LF106	BM005490	54/1.5	175	CAAAGCAGCCGCAAAGA/GGGTGATCAGATTGTAGG
LF108	T58322	50/1.5	265	AAGTCCGGCAAGCTGAAGG/GCTTGATCTGTTCCAGGGC
LF124	BM005518	54/1.5	103	GAGGAGAAGCGCAAGCAC/TTGGGCATGGCTGAACAC
LF129	BM005504	54/3.0	300	GCACCAGAAAGTCGGAATC/AGTACACCCAGGCACCCG
LF138	T58332	54/1.5	204	CGTGTTCAACTACGACAT/TCCTTCAATGTACGATGAG
LF158	BM005485	50/3.0	239	GGAAGGGTCTGAAGATCACC/AGCACTTCTTGCAAGTACC
LF168	R47184	54/1.5	113	GGAGGACGCTGCAAGCAC/ACGATGTTCCGGATCACG
LF178	T58309	50/1.5	207	GCCGTGGTGTCCCAGATC/GCAGACGCATACGGATGTG
LF179	BM005479	50/3.0	234	AACAAGTGACCCAACTGACTG/ACACCTTGACATTGGCCTTG
LF188	BM005472	54/1.5	208	CTTTGACGACTTCAAGCGC/ACGGAAGCGAAGGCC
LF218	BM005487	50/1.5	176	AAGGGCCAGTTCGCATG/CCGGGTTCCGATGTTGATCGA
LF231	BM005478	50/1.5	100	TTGCTGAAGGTGTCCAAGGA/TGTTGGACAGTTCCTCACGC
LF250	T58311	54/1.5	152	CTGGAGACTGGCCGCG/TCAGGTCAAGTGGTTTAC
LF253	T58331	58/1.5	214	TGAAGACTCTCCGCCAGG/CGGATGATATCGGAATCT
LF272	BM005484	54/3.0	147	GTGCGTGGTATCTCCATCAA/GATGTTGTTGAAGTCCAGCTG
LF291	BM005482	54/1.5	250	GAACACCTTGGCCGAGTG/GTGCACAGGGAACCATCG
LF334	BM005506	54/1.5	200	GTTTCATGAAGTACGCCAAGG/CTTGCCGATGCATTCTCC
LF417	BM005499	54/1.5	228	GAAGACCAGGAAGCTACGTGG/GACCAGCGACCACAGCTT

\* PCR = polymerase chain reaction; bp = basepairs.

For LF178, we sequenced the PCR product obtained from one individual each from *Ae. aegypti*, *Ar. subalbatus*, and *D. melanogaster*. The CAT PCR products from *Ar. subalbatus* and *D. melanogaster* exhibited 92% and 83% nucleotide identity, respectively, when subjected to a pairwise alignment with the original *Ae. aegypti* LF178 cDNA sequence using the Blast2 program.<sup>32</sup> A representative nucleotide and amino acid sequence alignment for all CAT PCR products based upon LF178, LF158, and LF103 is shown in Figure 3.

For CAT PCR products designed from *Ae. aegypti* LF158, we sequenced one individual each from *Ae. aegypti* and *D.*

*melanogaster*. The *D. melanogaster* sequence was interesting in that it was 394 nucleotides in length while the *Ae. aegypti* PCR product was only 241 nucleotides in length. BLAST analysis of the *D. melanogaster* PCR product showed 100% nucleic acid identity and 100% amino acid identity to the *Drosophila* ribosomal protein L12 gene, GenBank accession number AAF47152, which contains four introns. The *D. melanogaster* CAT sequence spanned the fourth intron. The first exon in the *D. melanogaster* CAT PCR product showed 82% nucleotide identity with the original *Ae. aegypti* LF158 clone (nucleotides 1-135) and the second exon showed 74%

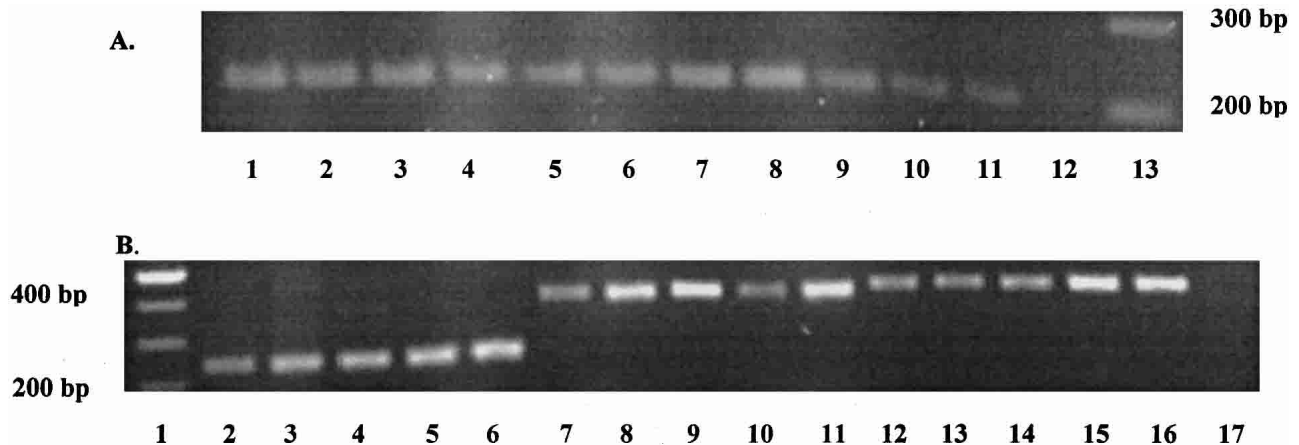


FIGURE 1. Representative agarose gels of single individual dipterans after amplification with comparative anchor-tagged sequences (CATS) polymerase chain reaction (PCR) primer pairs. **A**, Amplification products with the CATS LF178 primer pair. Lanes 1–3, products from single *Aedes aegypti* individuals; lanes 4–6, single *Anopheles gambiae* individuals; lanes 7 and 8, single *Drosophila melanogaster* individuals; lanes 9–11, single *Culex pipiens* individuals; lane 12, negative control lane; lane 13, 100-basepair molecular weight marker. **B**, Amplification products with the CATS LF158 primer pair. Lane 1, 100-basepair molecular weight marker; lanes 2–6, single *Ae. aegypti* individuals; lanes 7–11, single *An. gambiae* individuals; lanes 12–16, single *D. melanogaster* individuals; lane 17, negative control. The CAT LF158 PCR products from the *An. gambiae* and *D. melanogaster* individuals each contain an intron, while the product from the *Ae. aegypti* individuals does not. bp = basepairs.

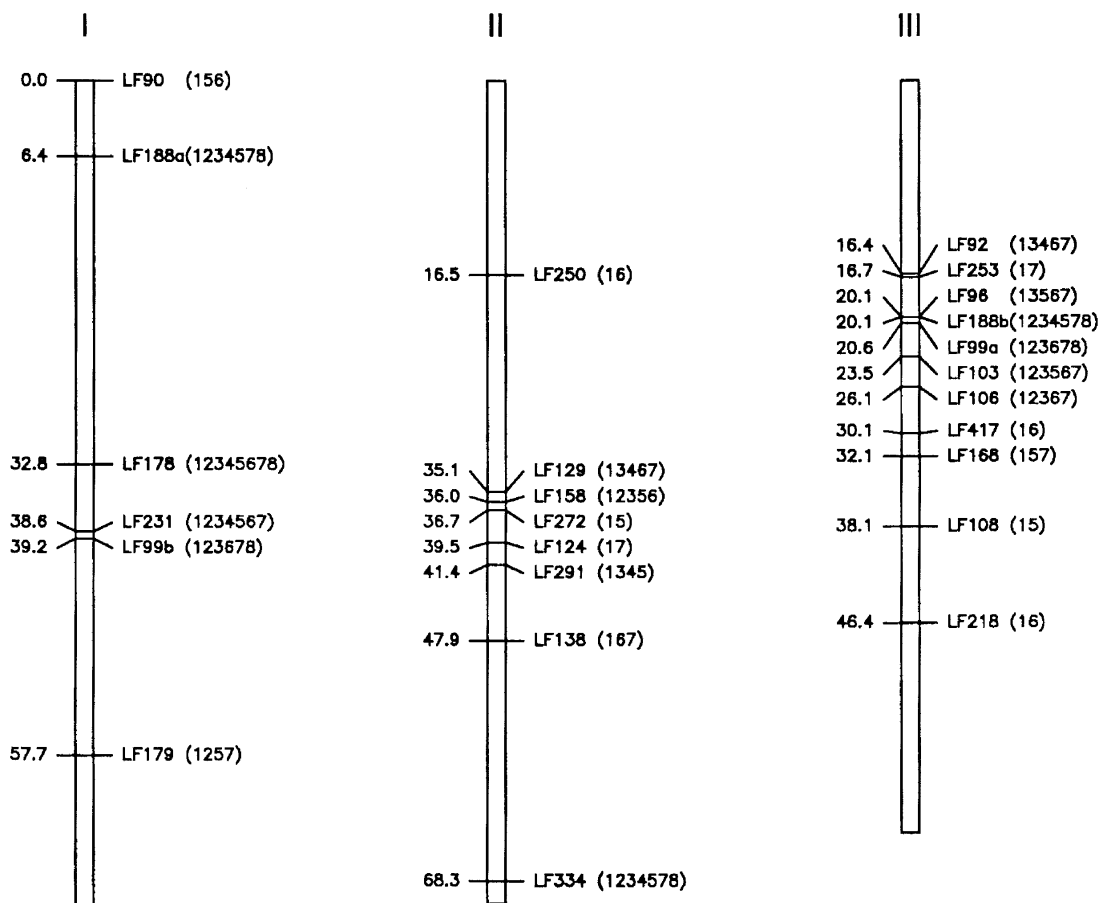


FIGURE 2. Relative distribution of comparative anchor-tagged sequence markers based on restriction fragment length polymorphism loci on the *Aedes aegypti* genetic map. The numbers in parentheses indicate the species amplified by that marker. 1 = *Ae. aegypti*; 2 = *Drosophila melanogaster*; 3 = *Anopheles gambiae*; 4 = *Ae. togoi*; 5 = *Armigeres subalbatus*; 6 = *Culex pipiens*; 7 = *Ochlerotatus triseriatus*; 8 = *Rhagoletis pomonella*. I, II, and III refer to chromosome numbers. Map distances are listed in Kosambi centiMorgans.

nucleotide identity with the same clone sequence (nucleotides 289-394). The CAT PCR product obtained from *An. gambiae* also seemed to contain an intron (Figure 1B).

Finally, for LF103 we sequenced PCR products obtained from one individual each of *Ae. aegypti* and *Ar. subalbatus*. The *Ar. subalbatus* CAT sequence showed 88% nucleotide identity with the original *Ae. aegypti* LF103 cDNA when the two sequences were subjected to a pairwise sequence alignment using the Blast2 computer program.<sup>32</sup>

TABLE 2

Comparative anchor-tagged sequence amplification success rate in Diptera

Genus and species	Family	% single product*
<i>Aedes aegypti</i>	Culicidae	100
<i>Ochlerotatus triseriatus</i>	Culicidae	61
<i>Armigeres subalbatus</i>	Culicidae	52
<i>Anopheles gambiae</i>	Culicidae	48
<i>Culex pipiens</i>	Culicidae	48
<i>Drosophila melanogaster</i>	Drosophilidae	35
<i>Aedes togoi</i>	Culicidae	26
<i>Rhagoletis pomonella</i>	Trypetidae	13

\* The percentage of the 23 primers listed in Table 1 that produced a single polymerase chain reaction product.

## DISCUSSION

Mosquitoes, members of the insect order Diptera and family Culicidae, are divided into three subfamilies: Culicinae, Anophelinae, and Toxorynchitinae.<sup>1</sup> A limited number of species within each of the former two subfamilies serve as obligate intermediate vectors for a variety of diseases such as malaria, dengue fever, yellow fever, and lymphatic filariasis. Malaria alone accounts for 2.7 million deaths annually, lymphatic filariasis afflicts and disables upwards of 120 million people each year<sup>34</sup> and dengue strikes 50 million individuals each year with an ever increasing number of accompanying cases of dengue hemorrhagic fever.<sup>34</sup>

The development of CATS markers with utility across a wide range of mosquito species could prove to be very useful for identifying species-specific as well as common genes involved in vector competence for malaria, filariasis, and arboviruses. That is, a comparative genomics approach facilitated by such markers would allow us to rapidly determine if the same genomic regions play a role in vector competence. Positional cloning efforts to isolate and characterize the individual genes from these regions could then be better directed toward mosquito species that are more fully characterized genetically and more amenable to laboratory manipulations because many of the mosquito species responsible for disease



of syntenic regions<sup>23</sup> and identifying regions of additional microsynteny, which may exist between dipterans in general and particularly among the great majority of mosquito species who are members of the sub-family *Culicinae*.

Additionally, CATS could prove valuable for phylogenetic studies. Using CATS, sequence comparisons can be made between a wide variety of mosquito species, which would contribute toward a greater understanding of systematic and taxonomic relationships between mosquitoes. It is believed that the lower diptera (mosquitoes, midges, gnats) diverged from the higher flies (*Drosophila* and house flies) about 250 million years ago.<sup>44</sup> Traditional evolutionary systematics in mosquitoes was based on morphologic characters<sup>44</sup> that placed the Anophelinae at the basal position, with Toxorynchitinae intermediate and Culicinae the most recently derived.<sup>44</sup> Recent molecular data has supported this assertion, as shown by the use of the *white* gene by Besansky and Fahey<sup>45</sup> to evaluate taxonomic relationships among the Culicidae. It is interesting to note that our success in amplification with CATS primer pairs was highly correlated with the reported evolutionary relationship among the various species tested. Those species that had diverged more recently from *Ae. aegypti*, e.g., *Oc. triseriatus* and *C. pipiens*, exhibited greater success in amplification as CATS, while those that diverged earlier, e.g., *An. gambiae*, *D. melanogaster*, and *R. pomonella*, were less successful in amplifying with the CATS primer pairs.

Given that the total genome sequence is available for *D. melanogaster*,<sup>46</sup> and just recently for *An. gambiae*,<sup>47</sup> and an *Ae. aegypti* genome project has recently been initiated (Severson DW, unpublished data), the application of comparative genomics to other Culicidae as well as to the Diptera in general is likely to grow rapidly.<sup>48</sup> Our demonstration of CATS utility for inter-specific comparisons should facilitate that process.

Received December 27, 2002. Accepted for publication April 3, 2003.

Financial support: This work supported by National Institute of Health grants AI-33127 and AI-34337.

Authors' address: Eric W. Chambers, Diane D. Lovin, and David W. Severson, Center for Tropical Disease Research and Training, Department of Biologic Sciences, University of Notre Dame, Notre Dame, IN 46556, Telephone 574-631-3826, Fax 574-631-7413, E-mail: Severson.1@nd.edu

## References

1. Knight KL, Stone A, 1977. *A Catalog of the Mosquitoes of the World (Diptera: Culicidae)*. Baltimore, MD: The Thomas Say Foundation.
2. Munstermann LE, Craig GB Jr, 1979. Genetics of *Aedes aegypti*: updating the linkage map. *J Hered* 70: 291-296.
3. O'Brien SJ, 1990. *Genetic Maps: Locus Maps of Complex Genomes: Lower Eukaryotes*. Fifth edition. Volume 3. Cold Spring Harbor, NY: Cold Spring Harbor Laboratory Press.
4. O'Brien SJ, 1993. *Genetic Maps: Locus Maps of Complex Genomes: Lower Eukaryotes (33 Maps)*. Sixth edition. Volume 3. Cold Spring Harbor, NY: Cold Spring Harbor Laboratory Press.
5. Matthews TC, Munstermann LE, 1994. Chromosomal repatterning and linkage group conservation in mosquito karyotypic evolution. *Evolution* 48: 146-154.
6. Severson DW, Mori A, Zhang Y, Christensen BM, 1993. Linkage map for *Aedes aegypti* using restriction fragment length polymorphisms. *J Hered* 84: 241-247.
7. Severson DW, Meece JK, Lovin DD, Saha G, Morlais I, 2002. Linkage map organization of expressed sequence tags and sequence tagged sites in the mosquito *Aedes aegypti*. *Insect Mol Biol* 11: 371-378.
8. Antolin MF, Bosio CF, Cotton J, Sweeney W, Strand MR, Black WC IV, 1996. Intensive linkage mapping in a wasp (*Bracon hebetor*) and a mosquito (*Aedes aegypti*) with single-strand conformation polymorphism analysis of random amplified polymorphic DNA markers. *Genetics* 143: 1727-1738.
9. Fulton RE, Salasek ML, DuTeau NM, Black WC IV, 2001. SSCP analysis of cDNA markers provides a dense linkage map of the *Aedes aegypti* genome. *Genetics* 158: 715-726.
10. Wang R, Kafatos FC, Zheng L, 1999. Microsatellite markers and genotyping procedures for *Anopheles gambiae*. *Parasitol Today* 15: 33-37.
11. Severson DW, Mori A, Zhang Y, Christensen BM, 1994. Chromosomal mapping of two loci affecting filarial worm susceptibility in *Aedes aegypti*. *Insect Mol Biol* 3: 67-72.
12. Severson DW, Thathy V, Mori A, Zhang Y, Christensen BM, 1995. Restriction fragment length polymorphism mapping of quantitative trait loci for malaria parasite susceptibility in the mosquito *Aedes aegypti*. *Genetics* 139: 1711-1717.
13. Beerntsen BT, Severson DW, Klinkhammer JA, Kassner VA, Christensen BM, 1995. *Aedes aegypti*: a quantitative trait locus (QTL) influencing filarial worm intensity is linked to QTL for susceptibility to other mosquito-borne pathogens. *Exp Parasitol* 81: 355-362.
14. Zheng L, Cornel AJ, Wang R, Erfle H, Voss H, Ansoorge W, Kafatos FC, Collins FH, 1997. Quantitative trait loci for refractoriness of *Anopheles gambiae* to *Plasmodium cynomolgi* B. *Science* 276: 425-428.
15. Gorman MJ, Severson DW, Cornel AJ, Collins FH, Paskewitz SM, 1997. Mapping a quantitative trait locus involved in melanotic encapsulation of foreign bodies in the malaria vector, *Anopheles gambiae*. *Genetics* 146: 965-971.
16. Bosio CF, Fulton RE, Salasek ML, Beaty BJ, Black WC IV, 2000. Quantitative trait loci that control vector competence for dengue-2 virus in the mosquito *Aedes aegypti*. *Genetics* 156: 687-698.
17. Mori A, Severson DW, Christensen BM, 1999. Comparative linkage maps for the mosquitoes (*Culex pipiens* and *Aedes aegypti*) based on common RFLP loci. *J Hered* 90: 160-164.
18. Severson DW, Mori A, Kassner VA, Christensen BM, 1995. Comparative linkage maps for the mosquitoes *Aedes albopictus* and *Ae. aegypti*, based on common RFLP loci. *Insect Mol Biol* 4: 41-45.
19. Anderson JR, Grimstead PR, Severson DW, 2001. Chromosomal evolution among six mosquito species (Diptera: Culicidae) based upon shared restriction fragment length polymorphisms. *Mol Phylogenet Evol* 20: 316-321.
20. Mori A, Tomita T, Hidoh O, Kono Y, Severson DW, 2001. Comparative linkage map development and identification of an autosomal locus for insensitive acetylcholinesterase-mediated insecticide resistance in *Culex tritaeniorhynchus*. *Insect Mol Biol* 10: 197-203.
21. Ferdig MT, Taft AS, Severson DW, Christensen BM, 1998. Development of a comparative genetic linkage map for *Armigeres subalbatus* using *Aedes aegypti* RFLP markers. *Genome Res* 8: 41-47.
22. Severson DW, Mori A, Zhang Y, Christensen BM, 1994. The suitability of restriction fragment length polymorphism markers for evaluating genetic diversity among and synteny between mosquito species. *Am J Trop Med Hyg* 50: 425-432.
23. Lyons LA, Laughlin TF, Copeland NG, Jenkins NA, Womack JE, O'Brien SJ, 1997. Comparative anchor tagged sequences (CATS) for integrative mapping of mammalian genomes. *Nat Genet* 15: 47-56.
24. Smith E, Shi L, Drummond P, Rodriguez L, Hamilton R, Powell E, Nahashon S, Ramlal S, Smith G, Foster J, 2000. Development and characterization of expressed sequence tags for the turkey (*Meleagris gallopavo*) genome and comparative sequence analysis with other birds. *Anim Genet* 31: 62-67.
25. Mazzarella R, Montanaro V, Kere J, Reinbold R, Ciccodicola A, D'Urso M, Schlessinger D, 1992. Conserved sequence-tagged sites: a phylogenetic approach to genome mapping. *Proc Natl Acad Sci USA* 89: 3681-3685.

26. Caetano AR, Lyons LA, Laughlin TF, O'Brien SJ, Murray JD, Bowling AT, 1999. Equine synteny mapping of comparative anchor tagged sequences (CATS) from human chromosome 5. *Mamm Genome* 10: 1082–1084.
27. Chen Z.-Q, Lautenberger JA, Lyons LA, McKenzie L, O'Brien SJ, 1999. A human genome map of comparative anchor tagged sequences. *J Hered* 90: 477–484.
28. Lyons LA, Kehler JS, O'Brien SJ, 1999. Development of comparative anchor tagged sequences (CATS) for canine genome mapping. *J Hered* 90: 15–26.
29. Altschul SF, Madden TL, Schäffer AA, Zhang J, Zhang Z, Miller W, Lipman DJ, 1997. Gapped BLAST and PSI-BLAST: a new generation of protein database search programs. *Nucleic Acids Res* 25: 3389–3402.
30. Smith RF, Wiese BA, Wojzynski MK, Davison DB, Worley KC, 1996. BCM Search Launcher—an integrated interface to molecular biology data base search and analysis services available on the World Wide Web. *Genome Res* 6: 454–462.
31. Severson DW, 1997. RFLP analysis of insect genomes. Crampton JM, Beard CB, and Louis C, eds. *The Molecular Biology of Insect Disease Vectors: A Methods Manual*. London: Chapman and Hall: 309–320.
32. Tatusova TA, Madden TL, 1999. Blast2 sequences - a new tool for comparing protein and nucleotide sequences. *FEMS Microbiol Lett* 174: 247–250.
33. van Ooijen JW, 1994. DrawMap: a computer program for drawing genetic linkage maps. *J Hered* 85: 66.
34. World Health Organization, 1997. Division of Control of Tropical Diseases. Available on the World Wide Web at URL <http://www.who.ch>.
35. Hiss RH, Norris DE, Dietrich CH, Whitcomb RF, West DF, Bosio CF, Kambhampati S, Piesman J, Antolin MF, Black WC IV, 1994. Molecular taxonomy using single-strand conformation polymorphism (SSCP) analysis of mitochondrial ribosomal DNA genes. *Insect Mol Biol* 3: 171–182.
36. Akey JM, Sosnoski D, Parra E, Dios S, Hiester K, Su B, Bonilla C, Jin L, Shriver MD, 2001. Melting curve analysis of SNPs (McSNP): a gel free and inexpensive approach for SNP genotyping. *Biotechniques* 30: 358–367.
37. Weller GL, Foster GG, 1993. Genetic maps of the sheep blowfly *Lucilia cuprina*: linkage group correlations with other dipteran genera. *Genome* 36: 495–506.
38. Ranz JM, Caceres M, Ruiz A, 1999. Comparative mapping of cosmids and gene clones from a 1.6 Mb chromosomal region of *Drosophila melanogaster* in three species of distantly related subgenus *Drosophila*. *Chromosoma* 108: 32–43.
39. Ranz JM, Casals F, Ruiz A, 2001. How malleable is the eukaryotic genome? Extreme rate of chromosomal rearrangement in the genus *Drosophila*. *Genet Res* 11: 230–239.
40. Bolshakov VN, Topalis P, Blass C, Kokoza E, della Torre A, Kafatos FC, Louis C, 2002. A comparative genomic analysis of two distant Diptera, the fruit fly, *Drosophila melanogaster*, and the malaria mosquito, *Anopheles gambiae*. *Genet Res* 12: 57–66.
41. Zdobnov EM, von Mering C, Letunic I, Torrents D, Suyama M, Copley RR, Christophides GK, Thomasova D, Holt RA, Subramanian GM, Mueller HM, Dimopoulos G, Law JH, Wells MA, Birney E, Charlab R, Halpern AL, Kokoza E, Kraft CL, Lai Z, Lewis S, Louis C, Barillas-Mury C, Nusskern D, Rubin GM, Salzberg SL, Sutton GG, Topalis P, Wides R, Wincker P, Yandell M, Collins FH, Ribeiro J, Gelbart WM, Kafatos FC, Bork P, 2002. Comparative genome and proteome analysis of *Anopheles gambiae* and *Drosophila melanogaster*. *Science* 298: 149–159.
42. Thomasova D, Ton LQ, Copley RR, Zdobnov EM, Wang X, Hong YS, Sim C, Bork P, Kafatos FC, Collins FH, 2002. Comparative genomic analysis in the region of a major *Plasmodium-refractoriness* locus of *Anopheles gambiae*. *Proc Natl Acad Sci USA* 99: 8179–8184.
43. Sharakhov IV, Serazin AC, Grushko OG, Dana A, Lobo N, Hillenmeyer ME, Westerman R, Romero-Severson J, Costantini C, Sagnon N, Collins FH, Besansky NJ, 2002. Inversions and gene order shuffling in *Anopheles gambiae* and *A. funestus*. *Science* 298: 182–185.
44. Ross HH, 1951. Conflict with *Culex*. *Mosq News* 11: 128–132.
45. Besansky NJ, Fahey GT, 1997. Utility of the *white* gene in estimating phylogenetic relationships among mosquitoes (Diptera: Culicidae). *Mol Biol Evol* 14: 443–454.
46. Myers EW, Sutton GG, Delcher AL, Dew IM, Fasulo DP, Flanagan MJ, Kravitz SA, Mobarry CM, Reinert KH, Remington KA, Anson EL, Bolanos RA, Chou HH, Jordan CM, Halpern AL, Lonardi S, Beasley EM, Brandon RC, Chen L, Dunn PJ, Lai Z, Liang Y, Nusskern DR, Zhan M, Zhang Q, Zheng X, Rubin GM, Adams MD, Venter JC, 2000. A whole-genome assembly of *Drosophila*. *Science* 287: 2196–2204.
47. Holt RA, Subramanian GM, Halpern A, Sutton GG, Charlab R, Nusskern DR, Wincker P, Clark AG, Ribeiro JM, Wides R, Salzberg SL, Loftus B, Yandell M, Majoros WH, Rusch DB, Lai Z, Kraft CL, Abril JF, Anthouard V, Arensburger P, Atkinson PW, Baden H, de Berardinis V, Baldwin D, Benes V, Biedler J, Blass C, Bolanos R, Boscus D, Barnstead M, Cai S, Center A, Chatuverdi K, Christophides GK, Chrystal MA, Clamp M, Cravchik A, Curwen V, Dana A, Delcher A, Dew I, Evans CA, Flanagan M, Grundschober-Freimoser A, Friedli L, Gu Z, Guan P, Guigo R, Hillenmeyer ME, Hladun SL, Hogan JR, Hong YS, Hoover J, Jaillon O, Ke Z, Kodira C, Kokoza E, Koutsos A, Letunic I, Levitsky A, Liang Y, Lin JJ, Lobo NF, Lopez JR, Malek JA, McIntosh TC, Meister S, Miller J, Mobarry C, Mongin E, Murphy SD, O'Brochta DA, Pfannkoch C, Qi R, Regier MA, Remington K, Shao H, Sharakhova MV, Sitter CD, Shetty J, Smith TJ, Strong R, Sun J, Thomasova D, Ton LQ, Topalis P, Tu Z, Unger MF, Walenz B, Wang A, Wang J, Wang M, Wang X, Woodford KJ, Wortman JR, Wu M, Yao A, Zdobnov EM, Zhang H, Zhao Q, Zhao S, Zhu SC, Zhimulev I, Coluzzi M, della Torre A, Roth CW, Louis C, Kalush F, Mural RJ, Myers EW, Adams MD, Smith HO, Broder S, Gardner MJ, Fraser CM, Birney E, Bork P, Brey PT, Venter JC, Weissenbach J, Kafatos FC, Collins FH, Hoffman SL, 2002. The genome sequence of the malaria mosquito *Anopheles gambiae*. *Science* 298: 129–149.
48. Kaufman TC, Severson DW, Robinson GE, 2002. The *Anopheles* genome and comparative insect genomics. *Science* 298: 97–98.