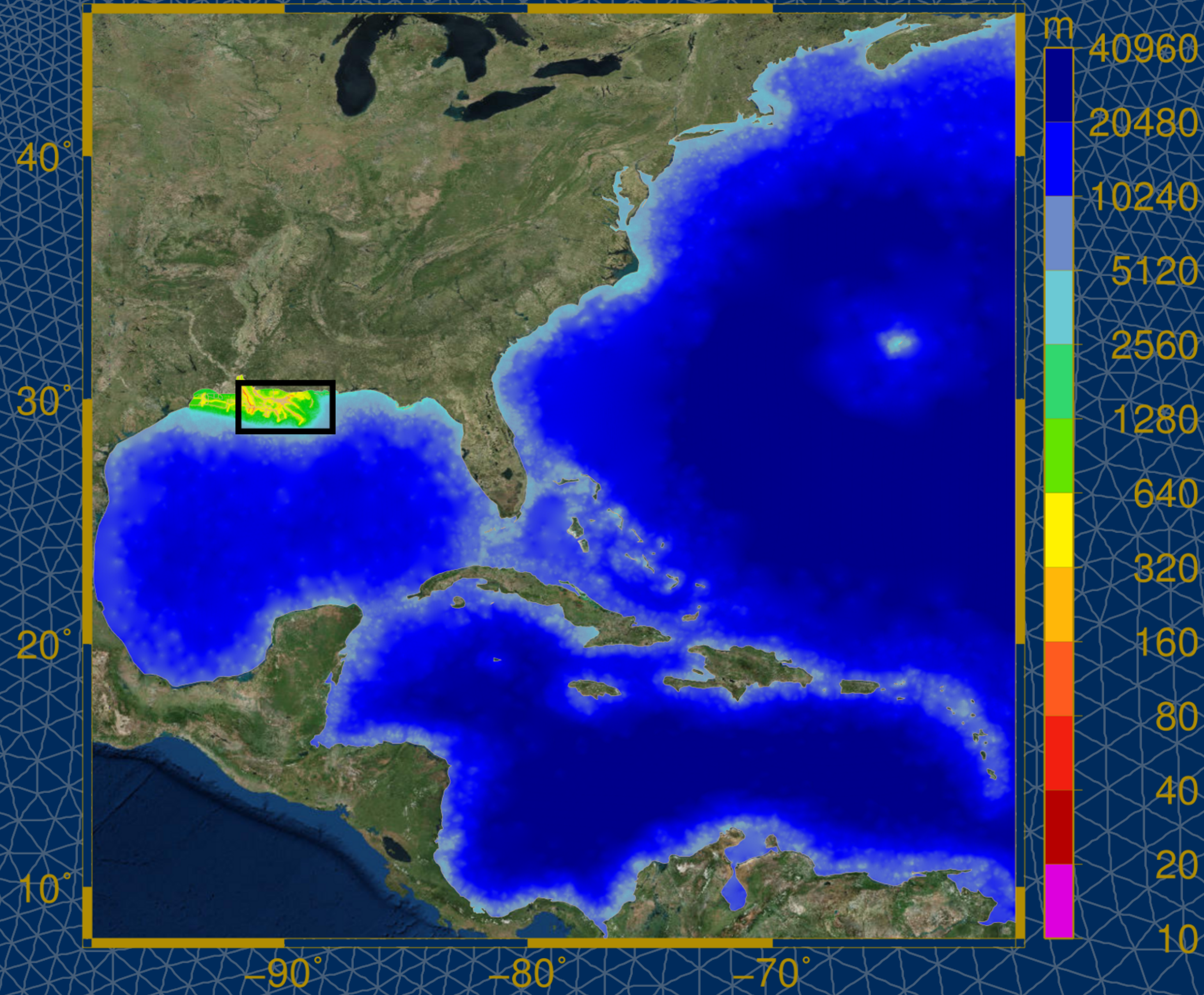
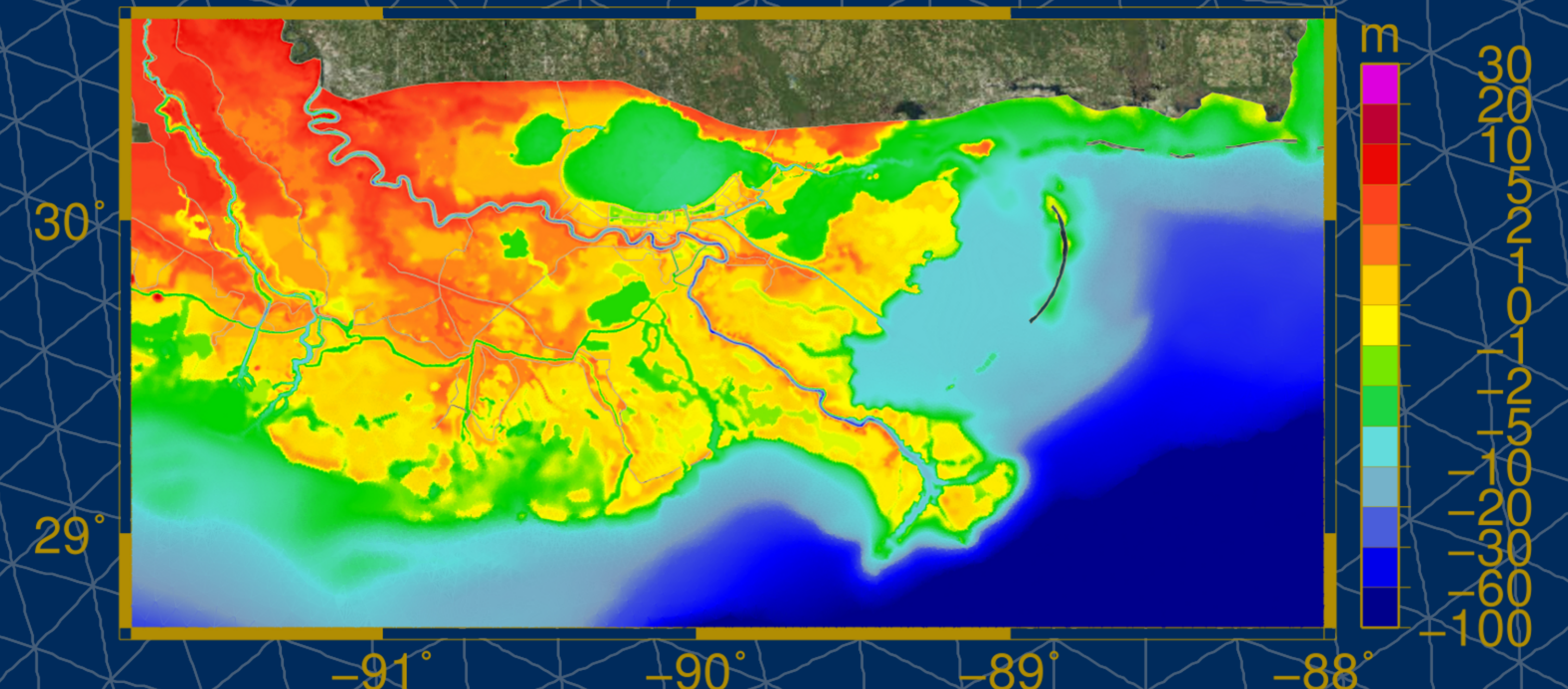
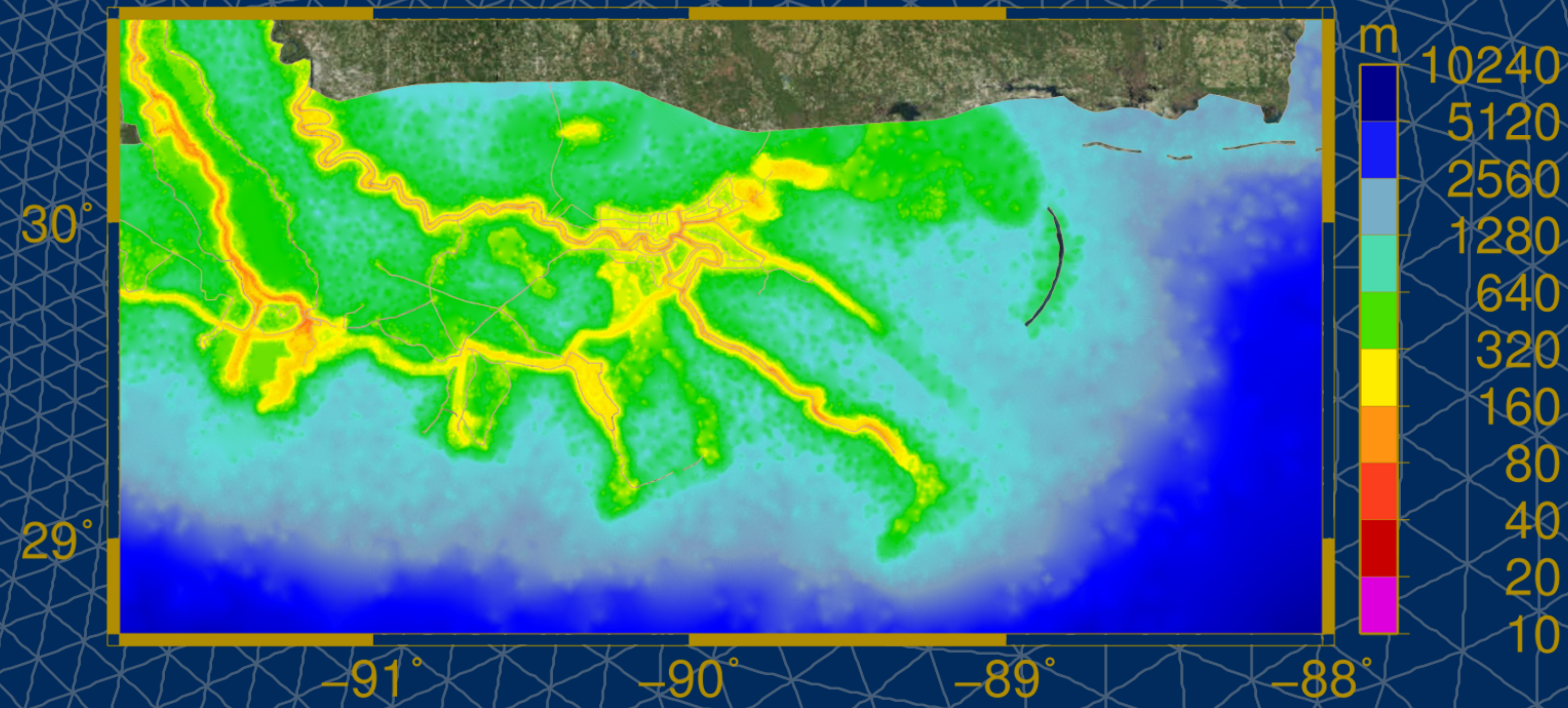
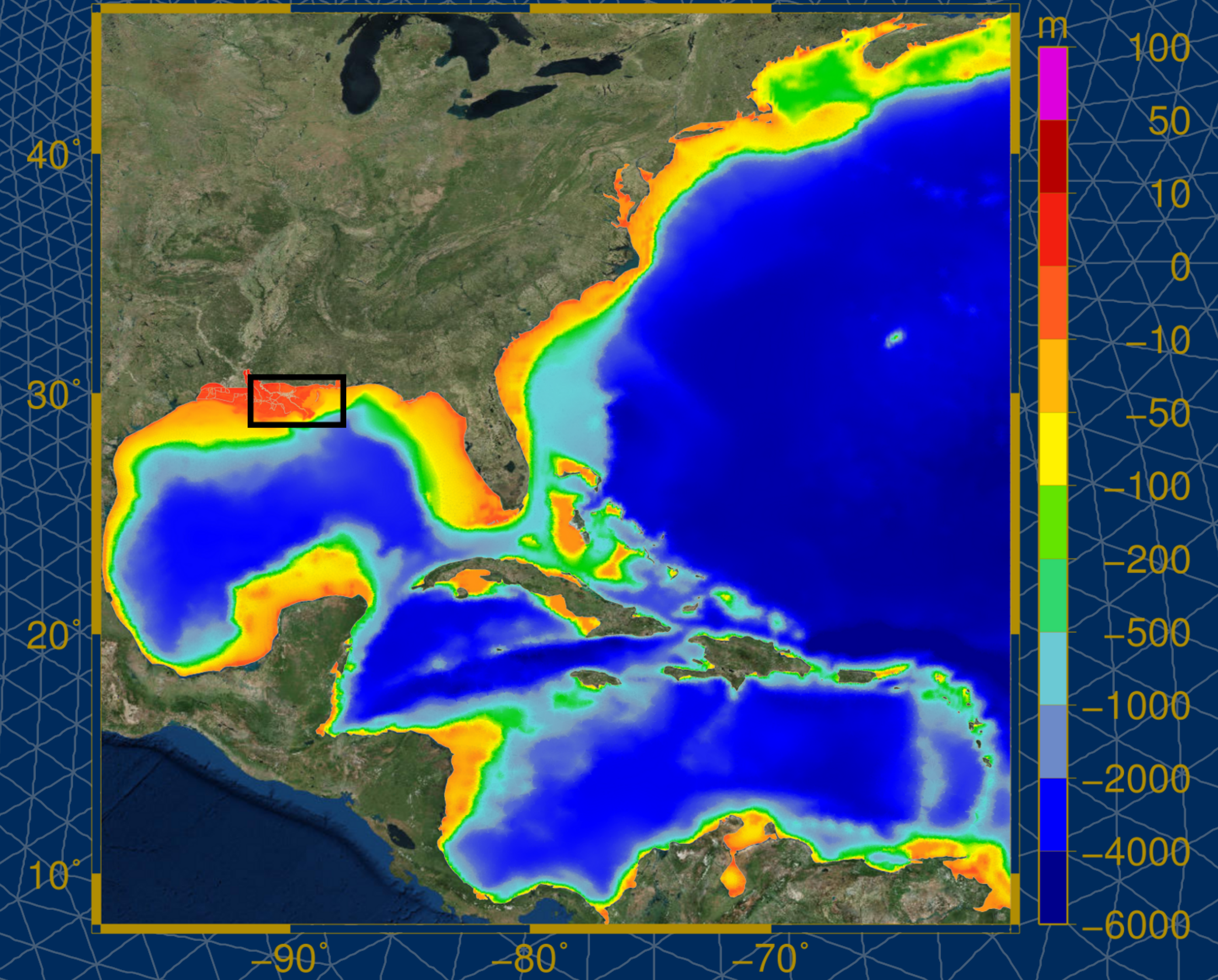


# S08

## Grid Size



## Bathymetry / Topography



Number of Elements: 600,331  
Number of Nodes: 314,442  
Minimum Resolution: 36.5 m  
Maximum Resolution: 59 km  
Created: 2005

First operational hurricane grid of Louisiana for computing tides, riverine flows and hurricane storm surge.

Westerink et al. 2008