

Fig. I. —Side view of Brain and Spinal Cord.
(Barnet.)

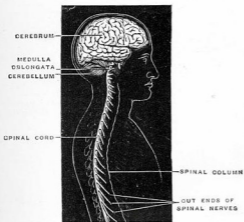
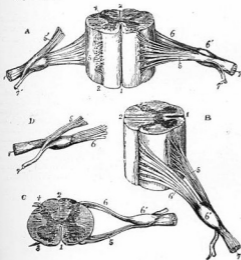


Fig. II. —Spinal Cord and Nerves, with Sympathetic Chain on one side.



Fig. III. —Roots of a Spinal Nerve issuing from the Cord: viewed (A) from before; (B) from the side; (C) from above; (D) the roots separated.



1, anterior fissure; 2, posterior fissure; 3 and 4, lateral grooves of cord; 5, anterior, efferent, or motor root; 6, posterior, afferent, or sensory root. (Furueux.)

V, pons varolii, below which is the medulla oblongata; C 1 to 8, the cervical nerves; A to X, the sympathetic chain connected with spinal nerves. (Furueux.)